

香港仕宏 2024 秋季拍賣會
「足吾所好——古董級普洱茶及佳茗專場」

2024 年 11 月 23 日 (星期六)
香港銅鑼灣告士打道 311 號
皇室堡 15 樓 1508-10 室

L&H HK AUTUMN Auction 2024
Vintage Pu-er Tea and Premium Tea Auction

2024.11.23 (SAT)
Room 1508-10, 15/F Windsor House,
311 Gloucester Road, Causeway Bay, Hong Kong

拍賣品資料及圖片可於官方網站查詢
Auction items details can be found at our website

<https://lhauktion.com.hk/>



香港仕宏二〇二四秋季拍賣會

足吾所好

古董級普洱茶及佳茗專場

23.11.2024

香港仕宏二〇二四秋季拍賣會
古董級普洱茶及佳茗專場

L&H HK AUTUMN AUCTION 2024
Vintage Pu-er Tea and Premium Tea Auction

足吾所好



微信客服



微信公眾號

仕宏拍賣有限公司 L&H Auction Co., Ltd

電郵 Email : auction@lh-hk.com

電話 Tel : +852 3168 2192 (HK) +852 9699 7687 (HK) +86 158 1858 1118 (CN)

地址 Address : 香港銅鑼灣告士打道 311 號皇室堡 15 樓 1508-10 室

Room 1508-10, 15/F Windsor House, 311 Gloucester Road, Causeway Bay, Hong Kong

* 本小冊子的產品內容、尺寸、重量及描述僅供參考，競投者需自行審視拍賣品以了解其狀況並詳閱仕宏拍賣的《一般銷售說明及條款》。

Auction items information such as size, weight and description in this brochure are for reference only.

Bidders are responsible for their own understanding and please refer to "General Sales Terms and Conditions".

全球徵集

INVITATION
TO CONSIGN
GLOBAL

古董級普洱茶及經典名茶
VINTAGE PU'ER TEA AND OTHER PREMIUM TEAS



歡迎全球藏家預約鑒定

MAKE AN APPOINTMENT NOW TO HAVE YOUR COLLECTABLES VALUED

徵集流程 SELL AT L&H AUCTION



WhatsApp

或



微信

掃描以上QR
SCAN QR



提供圖片及資料
UPLOAD PHOTOS

上傳茶餅或藏品的正面和背面照片。
Take front and back images of your item.

*注意：請勿打開茶餅的包裝紙
*Caution: Do not open the original paper of the tea cake.



提交
SUBMIT

留下您的姓名和聯絡方式
(聯絡電話、電郵、微信等)

Kindly leave us your name and contact information (contact number, email, etc.), so our specialists will be in touch with you soon.

香港仕宏拍賣

國際專業古董級普洱茶拍賣平台

「仕以高品而宏」

香港仕宏拍賣有限公司扎根香港逾十載，秉承「仕以高品而宏」之專業態度及宗旨，力求為大中華地區收藏者提供「高品質、高品味、高誠信度」拍賣平台，主要經營古董級普洱茶，涵蓋號級茶、印級茶、七子餅茶等傳奇佳茗，品類齊全，質量俱佳。

全球首家專營古董級普洱茶拍賣

香港仕宏拍賣（2013年成立）自2014年引入普洱茶拍賣，成為全球首家專營古董及頂級普洱茶拍賣行，至今已舉行超過十五場以茶為專場的拍賣，涵蓋百年號級茶、印級茶到2000年後新茶、老白茶等，創辦人周子先生於2019年更被中國版《福布斯》譽為「百萬古董普洱茶拍賣的中國第一人」。

專注古董茶葉 拍賣屢創紀錄

憑著專業經驗及遍佈世界各地的客戶網絡，歷次拍賣會均保持高成交率，領銜茶葉拍賣市場；2019年春，五十年代紅印青餅(一點紅版)以105萬港元落槌；2021年秋，百年紅標宋聘號始祖以1,380萬港元落槌，屢創拍賣成交紀錄，引證了行內及藏家們對仕宏專業性的認可。

專業鑒定估值及拍賣諮詢服務

仕宏專家團隊了解市場趨勢，深明藏家收藏及投資所需，以嚴謹且專業精神為廣大藏家提供標準化、科學化茶葉斷代、倉儲及估價鑒定服務。香港仕宏全年寰宇徵集拍品，線上線下免費專業諮詢服務，歡迎廣大藏家蒞臨垂詢。



L&H AUCTION | Global Professional Auction Platform for Vintage Pu'er Tea

Deeply rooted in Hong Kong since 2013, L&H Auction strives to offer highly sought-after collectables for diversified collectors in the Greater China region under the philosophy of "Greatness Consists in Refinement". Our mission is to make each and every auction of ours a golden opportunity for our valued collectors to acquire only the finest and rarest treasures in the market.

L&H Auction pioneered the auction of Vintage Pu-er and Premium Tea and has since set new records in the industry. In Spring Auction 2019, L&H achieved a record price of HK\$1 million for a 1950s Red Mark Pu-er Tea Cake. Shortly after, in Autumn Auction 2021, L&H set a milestone with a record price of

HK\$13.8 million for a stack of Red mark Song PingHaoPu-erTea Cake. Mr HenryChau, President of L&H Auction, is considered by Forbes China as – the first man in China to auction 1 million worth of Vintage Pu-er Tea Cake.

Our specialised team is highly trained with market insights to give the most suitable consultation. We also pride ourselves in our scientific valuation process, modern storage space and personalised valuation service to have our vast collectors' best interests in mind. L&H invites you to consign with us through instant online or in-person appointments throughout the year.

(852) 3168 2192 | (852) 9699 7687 | (86) 158 1858 1118

lhauktion | http://lhauktion.com.hk | auction@lh-hk.com

仕宏拍賣
L&H AUCTION



香港仕宏二〇二四秋季拍賣會

L&H HONG KONG
AUTUMN AUCTION 2024

Lot 152 五十年代 早期大字紅印青餅 一點紅版 · 乾倉

拍賣 AUCTION

11.23

星期六 下午 2 時 開拍
Saturday at 2 p.m.

 網上同步競拍 Online Auction Available

下午 2 時
2 p.m.



足吾所好 — 古董級普洱茶及佳茗專場
Vintage Pu-er Tea and Premium Tea Auction

下午 4 時半
4:30 p.m.

御尚芳奢 — 珍稀補品專場
Premium Delicacies Auction

預展 PREVIEW

11.21-22

星期四至五 早上 11 時 – 下午 6 時半
Thursday to Friday 11 a.m. to 6:30 p.m.

11.23

星期六 早上 11 時 – 下午 1 時
Saturday 11 a.m. to 1 p.m.

香港銅鑼灣皇室堡 15 樓

15/F Windsor House, 311 Gloucester Road, Causeway Bay, Hong Kong

仕宏「網絡同步競拍」平台

- 本專場將開通網上同步代拍服務，連結將於稍後時間公佈
- 準買家須於拍賣開始前的三個工作日前完成網絡帳戶註冊，及拍賣開始前的兩個工作天完成交納保證金，並上傳匯款憑據至仕宏拍賣網絡平台。
- 詳情請諮詢客戶服務部及留意官網或微信的最新資訊 (auction@lh-hk.com) +852 3168 2192 | +852 9699 7687 | +86 158 1858 1118

重要提示：各專場拍賣時間或因應需要提前或延後，敬請留意。

L&H Online Auction Platform

- Corresponding online bidding link will be available at a later stage
- Bidder must complete online registration at least 3 working days prior, also settle the deposit payment and upload payment proof at least 2 working days prior
- For enquiries, please contact us through email (auction@lh-hk.com) or phone +852 3168 2192 | +852 9699 7687 | +86 158 1858 1118

IMPORTANT NOTICE: The schedule may be subject to change under certain circumstances.

競投者須知 Notice to Bidders

歡迎閣下蒞臨香港仕宏拍賣會。為確保閣下能順利參與競投，請於登記時攜帶以下所需文件及保證金。

Welcome to L&H Auction. In order to facilitate the registration process, please provide the following documents and prepare security deposit for registration.

個人客戶 Private Clients

- 附照片之身份證明文件（如護照、居民身份證）Passport / Identity Card
- 三個月內之住址證明 Residential Proof within last 3 months

公司客戶 Corporate Clients

- 公司代理人或委託人附照片之身份證明文件 Photo ID of the person representing the Corporation
- 護照 / 居民身份證 Passport / National Identity Card
- 買賣授權委託書 Letter of authorization to buy on behalf of the Corporation
- 公司註冊證明書 / 商業登記證 Certificate of incorporation / Business registration

保證金 Security Deposit

競投者應在參加仕宏拍賣之拍賣活動前辦理拍賣投標牌登記，同時完成交納拍賣會保證金及得到仕宏拍賣的確認。

所有保證金必須以銀行轉帳、電匯或現金方式付款。仕宏拍賣不接受包括代理人之內任何第三方支付。如仕宏拍賣未在拍賣活動登記限期內收到競投者之保證金及付款憑據，則視為競投者拍賣投標牌登記申請無效。如競投者未能成功競投任何拍賣品，同時於仕宏拍賣沒有任何欠款紀錄。仕宏拍賣將安排在拍賣活動結束後十個工作日內退回閣下已付的保證金（不包含利息）。如退回保證金款項涉及任何兌換匯率損失或費用，一概由競投者承擔。

Bidders must complete the security deposit payment when registering for the auction paddle before participating in L&H Auction's auction event.

All security deposits must be paid by bank transfer, telegraphic transfer or cash to the designated account of L&H Auction. L&H Auction does not accept payments from any third parties, including agents. If L&H Auction does not receive the bidder's security deposit and payment receipt by the registration deadline for the auction event, the bidder's paddle registration will be considered invalid. If the bidder fails to successfully bid on any auction Lots and has no outstanding payment with the L&H Auction Co., Ltd., L&H Auction will refund your security deposit (without interest) within 10 working days after conclusion of the auction event. Any losses or charges relating to currency exchange when returning the deposit will be borne by the bidder.

參與電話競投、書面委託競投 / 網上競投 Telephone Bids / Written Bids / Internet Bids

- 競投者應親自出席拍賣會。如不能親身出席或有代理人出席，可採用書面形式委託仕宏拍賣代為競投或電話競投。仕宏拍賣有權決定是否接受上述委託。競投者必須在拍賣會開始前 48 小時透過電郵、傳真或親身遞交投標委託書及相關文件。申請一經確認，仕宏拍賣將以電郵形式回覆競投者。網上同步競拍、書面及電話競投是仕宏拍賣提供之附加服務，風險由競投者承擔，而該等服務會在仕宏拍賣於拍賣時其他承諾之限下進行；因此，無論是由於疏忽或其他原因引至，仕宏拍賣毋須就未能作出該競投承擔責任。

Bidders shall attend the auction in person. If bidders or their agent cannot attend in person, they can appoint L&H Auction in writing to bid on their behalf. L&H Auction has the discretion to accept or decline the above appointment. Bidders must submit their absentee bid forms and related documents by email, fax, or in person 48 hours prior to the start of the auction. L&H Auction will send confirmation to bidders via email upon received of the bid form. Please note that the execution of online bids, written and telephone bids are offered as an additional service for no extra charge, and at the bidder's risk. It is undertaken subject to L&H Auction's other commitments at the time of the auction. L&H Auction's therefore cannot accept liability for failure to place such bids, whether through negligence or otherwise.

- 競投者可通過仕宏拍賣的「網絡同步競拍」平台參與競拍。準買家參加仕宏拍賣網絡拍賣活動，須於拍賣開始前的三個工作天前完成網絡帳戶的註冊並通過仕宏拍賣的審批，同時於拍賣開始前的兩個工作天前完成交納保證金，方可進行網上競投。有關網上競投登記及其他相關事宜，可參閱 www.lhauction.com.hk/tc/buy 仕宏拍賣「網上競投規則」。

Bidder can participate in the bidding through "L&H Online Auction" platform. Should bidders wish to participate in L&H online auction, they must complete online registration at least 3 working days prior to the day of the auction and be approved by L&H Auction, and the bidders must settle the deposit payment at least 2 working days prior to the day of the auction before any online bidding can be placed. For online bidding registration and other related matters, please review L&H Auction "Online Bidding Rules" at www.lhauction.com.hk/en/buy.

買家佣金優惠 Buyer's Premium Discount

買家於拍賣會當天起 7 天內以現金、支票或銀行轉帳及銀行電匯繳付拍賣所有款項，均可獲減免 2 % 買家佣金以作優惠。(詳情請參閱圖錄內一般銷售說明及條款)

2% of the buyer's premium can be deducted if any outstanding payment(s) is settled within 7 days after the auction in the form of cash, cheque, bank transfer or bank wire transfer. (For further details, please refer to GENERAL SALES TERMS AND CONDITIONS).

付款方式 Payment methods

買家須於拍賣會後的 15 天內全數繳付拍賣所有款項。仕宏拍賣接受以現金、支票、信用卡 (VISA、MASTER、銀聯卡)、銀行轉帳或銀行電匯結帳。若買家於拍賣會當天起於 7 天後才以信用卡付款，則須額外支付發票總額的 2% 作利息。若以支票、銀行轉帳或銀行電匯方式付款，須待仕宏拍賣確認款項到帳後方可提貨。

Buyers are required to settle all payment(s) within 15 days of post-auction. L&H Auction accepts cash, cheque, credit card (Visa, Master, Union Pay), bank transfer or bank wire transfer. If the buyer paid by credit card after 7 days from the day of the auction, an additional interests equivalent to 2% of the total amount of the invoice has to be paid. If a payment is settled by cheque, bank transfer or bank wire transfer, the buyer is required to wait for a confirmation by L&H Auction until full payment is received, before the auction lot(s) can be collected.

買家佣金比率 Buyer's Premium Rates

買家佣金以落槌價按階梯式分段計算。The buyer's premium is calculated on the basis of the hammer price with tiered pricing.

每件拍品落槌價適用佣金比率之級距 Portion of Hammer Price Subject to Applicable Commission Rate	佣金比率以落槌價百分比計算 Applicable Premium Rate as % of Hammer Price
落槌價中首 HKD 100 萬或以下之部分 The part of hammer price HKD1,000,000 or below	19%
落槌價中逾 HKD 100 至 300 萬之部分 The part of hammer price between HKD1,000,000 — HKD3,000,000	17%
落槌價中逾 HKD 300 萬之部分 The part of hammer price above HKD3,000,000	15%
買家除支付落槌價外，並同意支付予仕宏拍賣買家佣金及任何適用之稅項及款項。 In addition to the hammer price, the buyer agrees to pay L&H Auction a buyer's premium and any applicable taxes and payments.	
以 落槌價 320 萬 為例	
<p>佣金 (%) 19% 17% 15%</p> <p>落槌價 (萬) 100 萬 300 萬 320 萬</p>	
佣金計算方式	(首100萬部分) x 19% = 19萬; (逾100萬 - 300萬部分) x 17% = 34萬; (逾300萬以上部分) x 15% = 3萬
佣金總共	19萬 + 34萬 + 3萬 = 56萬
成交價	320萬 (落槌價) + 56萬 (佣金) = 376萬

取貨安排 Pick up arrangement

買家可於拍賣結束後到仕宏拍賣有限公司付款及取貨。

Buyers can arrange payment and pick up at L&H Auction Co., Ltd after the auction.

地址 Address:

銅鑼灣告士打道 311 號皇室堡 15 樓 1508-10 室 (銅鑼灣站 E 出口)
Room 1508-10, 15/F, Windsor House, 311 Gloucester Road, Causeway Bay (Causeway Bay Station Exit E)
852 3168-2192 | 852 9699 7687 (香港) +86 158 1858 1118 (中國)

取貨時間 Business Hour:

星期一至五 (早上 10:00 至晚上 6:00); 星期六、日及公眾假期 (敬請預約)
Mon - Fri (10:00 a.m. to 6:00 p.m.); Sat - Sun and Public Holiday (Reservation required)

取貨期限 Pick Up Period:

23/11/2024 (Sat) - 09/12/2024 (Mon)

請於取貨時提供以下所需文件 Please provide the following documents for pick up:

1. 親身領取 Pick up in person

- * 出示發票之正本 Original copy of Invoice
- * 身份證 / 護照 Identification document
- * 如以銀行電匯，須提供匯款單 If payment by bank wire transfer, please provide remittance advice

2. 委託人領取 Pick up by authorized person

- * 出示發票之正本 Original copy of Invoice
- * 委託人身份證 / 護照 Identification document of authorized person
- * 如以銀行電匯，須提供匯款單 If payment by bank wire transfer, please provide remittance advice
- * 委託書 (必須註明買家姓名，買家身份證 / 護照，委託人姓名，委託人身份證 / 護照及買家簽名)
Authorization Letter (Include buyer's name, buyer's identification document, buyer's signature, authorized person's name and identification document)

* 本圖錄工本費為補品 \$100 元，茶葉 \$280 元

本專場所有拍品品相，請參照預展現場實物。

Please refer to the actual items on site for the conditions of all the lots at the auction.

普洱茶儲存條件 Pu-er Tea Storage Conditions

- **避免強光照射：**光線對成茶破壞力強大，茶味會帶有不佳酸味。

Avoid exposure to strong light: The light is very harmful to the tea. Exposure to the light may cause the sour taste of tea.

- **防吸味：**普洱都是極容易吸取其它異味的，所以必須防止異味竄入，產生不佳氣味。避免酒類、裝修或其他強烈氣味物品一起貯存。不可有外來水入侵，除了後轉化太快外，更可能水中有微生物而產生異菌發酵，產生不佳質變。

Prevent odor tampering: It is extremely easy for pu-er tea to absorb other peculiar smells. Please avoid storing with alcohol, finishing materials and other items with strong smell. There must be no other liquid infiltrated into the tea leaves. The negative effects include the too quick transformation of tea leaves and fermentation of the tea leaves by the other bacteria, resulting in poor tea quality.

- **溫度及濕度控制：**溫度方面來講，平均氣溫在 26~30 之間較為適宜。濕度方面，濕度保持在 60%~80% 之間有利於茶葉的存放和轉化。

Constant temperature and humidity: Please keep the average temperature between 26-30 degrees. In terms of humidity, please remain the humidity between 60%-80%, which is good for the storage and transformation of tea leaves.

- **乾燥通風：**茶品需要放置在通風處，應以自然溫度存放最佳。盡量單一茶品存放，生餅、熟餅分開放。

Dry environment and ventilation: The tea should be placed in a ventilated place and stored at the natural temperature. Try to store the tea of a single type in one place, and separate the storage of raw and fermented tea cakes.

普洱茶外觀改變 The Appearance Change of Pu-er Tea

- **茶葉顏色：**普洱茶經過歲月的自然催化，產生緩慢的轉化作用，茶葉會轉褐色甚至轉深褐色至黑色。

Tea Leaf Color: Pu-er tea will turn brown or even darker after the natural catalytic effect of aging and slow transformation.

- **蟲蛀：**普洱茶經年存放後，包裝棉紙如出現自然蟲咬的痕跡（蟲眼）屬正常現象，竹殼外包與茶紙被「竹蟲」侵入，但此蟲不吃茶葉，故對普洱茶的品質來說沒有過多的影響。

Natural traces of insect bites: After storage of years, the cotton wrapping of pu-er tea will have the natural damages by worms, which is very normal. The bamboo shells and the wrapping paper are invaded by bamboo worms, which do not eat the tea leaves. Thus, it does not affect the quality of tea leaves.

普洱茶品飲的器皿選擇 The Selection of Tea Wares for Pu-er Tea Drinking

- 茶器蓋杯以經高溫燒結磁化之瓷器為宜，茶杯以白瓷杯為佳，以方便觀察茶湯湯色與茶底，直接表現出茶的香氣與滋味。

The lids and teacups should be the porcelain fired at a high temperature. The recommended color for the porcelain is white, so that it will be convenient to observe the color of the brewed tea and the tea leaves inside.

- 紫砂壺嘴小、蓋嚴，壺的內壁較粗糙，可以有效地防止香氣過早散失。紫砂壺具有良好的透氣性，有助茶味的發揮。長久地使用的紫砂茶壺，內壁掛上一層棕紅色茶銹，使用時間越長，那麼茶銹積在內壁上就會越多，故沖泡普洱茶葉後茶湯越加醇郁芳馨。

With a small mouth and tight lid, the inner wall of the Yixing teapot is coarse, which can effectively prevent the early dissipation of the tea fragrance. Yixing teapots have the feature of good air permeability, bringing out the flavor of the tea. The long-term use of Yixing teapots, there will be thicker 'tea rust' on the inner walls. Therefore, the brewed tea would be more mellow and fragrant.

- 100ml 水配 7 克生茶，8 克熟茶為佳，沖茶水溫應保持在 100 攝氏度。

Please brew 7 grams of raw tea or 8 grams of fermented tea with 100 ml water. The boiled water for making tea should be 100 degrees Celsius.

其他飲品 / 食品 特別提示 Lot Condition Disclosure

- 茶葉拍品因年代久遠，經過多年陳放，包裝或可能存在破損、茶漬、蟲洞等情況，拍品可能存在散邊、斷裂、破損或與原廠標準重量不相同、已過保質期或沒有生產日期等情況。如競投者參與競買，即表示競投者已知悉并接受拍品包裝及狀態，並認可拍品質量。

Vintage Pu-er Tea may exhibit signs of aging, including packaging damage, staining, and insect holes. Lots may show signs of breakage, underweight, past best expiration dates, or lack production dates. By participating in the auction, bidders acknowledge awareness and acceptance of the above conditions.

- 本公司對拍品的品質不承擔瑕疵擔保責任，競投者應親自審看拍品實物。所有拍品介紹亦僅供參考，本公司不對該等拍品之外觀、飲用口味、色澤及飲用後果負責。

Bidder thorough inspection is crucial in this process. L&H Auction does not provide quality guarantees or warranties for such effects. All product descriptions are for reference only, and L&H Auction is not responsible for disputes over any appearance, taste, color, or other issues.

香港仕宏 · 首創普洱茶倉儲定義

L&H Auction Has Pioneered the Definitions of Pu-er Tea Storage

一般而言，普洱茶應存放於適中的溫度及濕度的環境中，而且通風透氣、清爽無雜味。長期的儲存歷程，使普洱茶進行漫長的後發酵，自然的陳化過程，保存了普洱茶的本質真性，也增加了品茗的價值。茶色逐漸由淺青黃——金黃色——栗紅色的變化。葉底黃栗色至深栗色。至於茶葉，條索結實，顏色鮮潤，油面光澤，充滿生命力。

Generally speaking, pu-er tea should be stored at the moderate temperature and humidity. The storage place should also be well ventilated and odorless. During the long-term storage, pu-er tea is naturally fermented and mellowed. This process has kept the original quality of pu-er tea, and added its value. The color of the brewed tea will gradually change from light greenish yellow, to golden yellow and then to chestnut red. The brewed tea leaves will be transformed from chestnut yellow to dark chestnut brown. As for the overall shape of tea leaves, they are tight and strong with the lustrous tea appearance.

外觀

乾倉普洱茶條索結實，顏色鮮潤，平面光澤，充滿生命力。

Appearance: The pu-er tea preserved in the dry storage is brightly colored. The surface of its tea cakes is flat and lustrous.

氣味

乾倉普洱茶有一股茶葉的陳香味。

Fragrance: The pu-er tea preserved in the dry storage has the nice aging fragrance of tea leaves.

湯色

乾倉普洱茶的湯色為青栗色——深栗，茶湯仍然有苦、澀味，湯色透亮。

Color of the Brewed Tea: The color of brewed pu-er tea can be greenish chestnut color to dark chestnut color. The brewed tea still has a bitter and astringent taste with the translucent color.

葉底

乾倉普洱茶的葉底是黃栗色至深栗色，質地活性柔軟，茶葉有彈性。

Brewed Tea Leaves: The brewed pu-er tea leaves kept in the dry storage is yellow chestnut color to dark chestnut brown. The texture is soft and bouncy.

餅身

乾倉茶的餅身邊緣因濕氣而較鬆散，但也因為濕氣與壓力，越往中心點越硬。

Tea Cakes: The outer tea cakes edges from the dry storage are looser due to moisture. However, the texture of the tea cakes gets harder to the center due to moisture and pressure.

<p>純乾倉 Absolutely Dry Storage</p>	<p>長年保存於比較封閉環境下，或存放於濕度 30-50% 左右的環境下。 Stored in air-tight-sealed environment, or humidity level at around 30-50%.</p>	<p>特性：表面油亮帶光澤，湯色青黃轉金黃，回甘強勁，氣霸略帶苦澀，並能迅速回甘，茶性剛強濃烈，茶氣高香 Features: The tea cake surface is lustrous. The brewed tea can be greenish yellow or golden. The sweet flavor is strong with a touch of bitterness. Extremely fragrant.</p>
<p>乾倉 Dry Storage</p>	<p>長期儲存於濕度少於 55% 之環境，基本上沒有在高於相對濕度約 70% 的環境存放 Stored in an environment with humidity less than 55%, and basically have not stored in an environment with humidity higher than 70%.</p>	<p>特性：香氣較濃郁、回甘快、湯色金黃清澈 Features: The fragrance is relatively strong. The brewed tea has a sweet aftertaste and the translucent golden color.</p>
<p>偏乾倉 Mild Dry Storage</p>	<p>一般儲存於濕度少於 60% 以下之環境，但某段時間濕度會高於 60% Generally stored in an environment with humidity less than 60%, however, it has also been stored at humidity level 60% or higher for a certain short period of time.</p>	<p>特性：香氣純正、回甘快、口感醇厚、湯色金黃清澈 Features: The fragrance is enjoyable. It has the sweet and mellow aftertaste.</p>
<p>自然倉 Natural Storage</p>	<p>一般儲存於濕度長期在 40-65% 之環境 Stored in an environment with humidity level between 40-65%.</p>	<p>特性：湯色紅濃亮麗，茶底有彈性，自然茶香與陳香結合形成獨特茶氣，層次分明 Features: The brewed tea has the bright and red color. The tea leaves after brewing are bouncy. The fragrance is multi-layered for its aging.</p>
<p>傳統香港倉 Traditional Hong Kong Storage</p>	<p>長時間儲存濕度達 60% 以上，平均維持 70% 左右 Stored in an environment with humidity level above 60%, maintaining average humidity level around 70%.</p>	<p>特性：醇舊濃郁，溫純養胃，湯色栗紅，湯感醇滑，富陳味，層次豐富 Features: The color of the brewed tea is chestnut red. It has the aged flavor with a mellow and soft taste.</p>

※ 以上描述之倉儲茶品狀態，泛指陳期 10 年以上的普洱茶

The above-mentioned conditions of stored pu-er tea refer to the ones that have aged for more than 10 years.

香港仕宏 · 首創 普洱茶倉儲描述定義

以88青為例子展示不同狀態下的倉儲描述
 隨時間推移，茶葉色澤愈趨深化



純乾倉
Absolutely dry Storage

長年保存於比較封閉環境下，或存放於溫度30-50%左右的環境下。
 Stored in air-tight-sealed environment, or humidity level at around 30-50%.

「純乾倉」以嚴格方式保持恆溫恆濕的倉儲環境。

口感與特性：表面油亮帶光澤，湯色青黃轉金黃，回甘強勁，氣霸略帶苦澀，並能迅速回甘，茶性剛強濃烈，茶氣高香



乾倉
Dry Storage

長期儲存於溫度少於55%之環境，基本上沒有在高於相對濕度約70%的環境存放。
 Stored in an environment with humidity less than 55%, and basically have not stored in an environment with humidity higher than 70%.

「乾倉」是最適合普洱茶的存放環境，其常溫環境濕度適中而通風透氣，自然發酵陳化過程，保證了普洱茶的本質真性：香氣高、滋味純、陳香正、韻味足。

口感與特性：香氣較濃郁、回甘快、湯色金黃清澈



偏乾倉
Mild dry Storage

一般儲存於溫度少於60%以下之環境，但某段時間溫度會高於60%。
 Generally stored in an environment with humidity less than 60%, however, it has also been stored at humidity level 60% or higher for a certain short period of time.

口感與特性：香氣純正、回甘快、口感醇厚、湯色金黃清澈



自然倉
Natural storage

一般儲存於溫度長期在40-65%之環境。
 Stored in an environment with humidity level between 40-65%.

「自然倉」指的是配合存茶地的氣候，以不經人為的天然濕度和溫度倉儲環境存茶，自然倉所存的茶葉品質受到倉庫地方氣候條件決定，因為一年四季的氣候變化，令普洱茶的陳化生息循環。

口感與特性：湯色紅濃亮麗，茶底有彈性，自然茶香與陳香結合形成獨特茶氣，層次分明。



傳統香港倉
Traditional Hong Kong Storage

長時間儲存溫度達60%以上，平均維持70%左右。

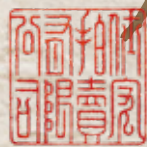
Stored in an environment with humidity level above 60%, maintaining average humidity level around 70%.

「傳統香港倉」是香港普洱茶商家及藏家為迎合港人口感將茶存放在濕度較高的儲存環境。

口感與特性：醇舊濃郁，溫純養胃，湯色栗紅，湯感醇滑，富陳味，層次豐富。



足吾所好



歐陽修《集古錄》：「足吾所好，玩而老焉也。象犀金玉之聚，其能果不散乎？予固未能以此而易彼也。」

一時之興耳湯為小圖并錄其上文徵明識	事茶具十詠目追次焉非敢竊附於二賢後聊以寄	車自第其高下以適其幽閒之趣偶憶唐贛皮陸故	試之會佳爰念我走惠三二種乃汲泉以火烹啜之	最盛余方抱病偃息一室弗能往與好事者同為品	嘉靖十三年歲在甲午穀雨前二日支硎席阜茶事	破睡策功多因人寄情永仙遊恍在茲悠然入靈境	花落春院幽風輕禪室靜活火煮新泉涼蟾浮圓影	煮茶	穀雨鬪時玲乳花凝處白林下晚未收吾方遲來暇	疇能鍊精琅範月奪素魄清空驚雪人雅樵吟風客	茶甌	龍顏縮蠶勢蟹眼浮雲液不使彌明嘲自適王濛厄	斷石肖古製中容外堅白煮月松風間幽香破蒼壁	茶鼎	體既靜而貞用亦和而燠朝夕春風中清香浮紙屋	昔聞鑿山骨今見編楚竹微籠火意溫密護雲芽馥
-------------------	----------------------	----------------------	----------------------	----------------------	----------------------	----------------------	----------------------	----	----------------------	----------------------	----	----------------------	----------------------	----	----------------------	----------------------

純乾八八青



此88青純乾倉一筒七片，標準大餅頭，大葉88青，帶有粗葉，蘋果綠，每片重量達340至357克，採用經典生茶7542配方製作，經三十多年的陳化，擁有優質茶底的88青茶質愈見成熟。茶氣足，茶湯質感強勁厚重，野香誘人，散發一縷縷甜香味，生津回甘快速，陳茶老韻漸強，豐富具有層次，深受藏家追捧。

These tea cakes are standard large size, each weighing between 340 and 357g, wrapped in packaging featuring an apple green "茶" character. Following the classic 7542 formula using large leaves and aged in an absolute dry warehouse, the brewed tea boasts a strong flavor, making it highly sought after by collectors.

Lot **101**

八十年代末 88 青餅 · 純乾倉

7 Pieces of 88 Pu-er Tea Cake
Circa Late 1980s

估價：HKD 680,000 - 1,200,000

倉儲：純乾倉
數量：一筒七片
總重量：約2522g

年份：1980年代末
工序：生茶
茶廠：勐海茶廠



純乾八五八



此八十年代薄紙8582青餅五片，純乾倉存儲。五至八級粗壯茶芽拼配，以七八級為主，餅身厚實。純乾倉陳化後滋味純正回甘強烈。數十年轉化的粗壯老料，為8582青餅帶來了無盡的回甜與豐富的層次。八十年代末出品配方工藝更成熟，經過三十餘年陳期及純乾倉保存之下，茶氣十足，樟香味充盈，有媲美印級茶風味，潛力令人期待。純乾倉環境有效延長其陳化的週期，保留普洱茶本質，茶氣高香、滋味純正、回甘強烈、茶底有活性。

The lot is in perfect condition, stored in an absolute dry warehouse. It was made by blending coarse and sturdy tea buds of grades 5 to 8, primarily grades 7 to 8, resulting in a thick and solid cake. The strong tea leaves have developed a long-lasting aftertaste with multiple layers, comparable to that of Yin Grade Pu-er. The absolutely dry storage effectively prolongs the aging process, preserving vibrant Pu-er flavor while enhancing its fragrance and lingering sweetness.

Lot **102**

八十年代 薄紙 8582 青餅 · 純乾倉

5 Pieces of 8582 Pu-er Tea Cake in Thin Wrapping
Circa 1980s

估價：HKD 400,000 - 680,000

倉儲：	數量：	總重量：	年份：
純乾倉	五片	約 3348g	1980年代
	3548g	3428g	工序：生茶
		388g	茶廠：勐海茶廠
		3373g	
		88g	



九六紫大益



此96紫大益青餅一筒七片，純乾倉存儲，是首次使用大益商標的茶品，並將常規茶印成玫瑰紫色外包裝，別具歷史意義。為令首款大益品牌茶一鳴驚人，拼配格外用心，原料配方有別於傳統7542，精選質優味醇原料。隨歲月陳化，成為帶有體感、茶氣及老茶口感。紫大益陳化後茶韻有88青7542配方基調，同時具備當下最受熱捧自然班章煙燻味。

This lot has been aged in an absolutely dry warehouse and is part of the inaugural batch bearing the Dayi trademark. Wrapped in a distinctive rose-purple print, it adds to its historical significance. The special blend creates a flavor profile that differs from traditional 7542. The taste combines characteristics of both 88 and 7542, featuring natural smoky flavor found in popular Ban Zhang teas, making it a standout product among mid-term teas.

Lot **103**

96 紫大益青餅 · 純乾倉

7 Pieces of Purple Dayi Pu-er Tea Cake
1996

估價：HKD 320,000 - 600,000

倉儲：純乾倉
數量：一筒七片
總重量：約2409g

年份：1996年
工序：生茶
茶廠：大益茶廠





Lot 104

倉數總
儲量重
：：量
純乾倉一筒約
：：七片2
：：片3
：：片5
：：片6
：：片8

92 青餅 (無飛版) · 純乾倉 / 乾倉

7 Pieces of Pu-er Tea Cake
1992

估價：HKD 180,000 - 320,000

年份：1992 年
工序：生茶
茶廠：勐海茶廠

此92青餅(無飛版)一筒七片，以純乾倉/乾倉倉儲，保存完好，原包狀態，薄紙包裝，硃砂紅字印刷，中央「茶」字為青綠色，條索幼結，茶芽比例尤重，具樟香陳韻。因當年出口台灣而去掉內票及內飛，92無飛實同屬88青同期7542青餅，經三十年陳化，茶氣陳韻俱佳，待適時轉化後，潛力可期。

This lot comes in its original packaging and has been preserved in absolute dry or dry storage under excellent conditions. The thin paper features vermilion ink, with a grass green "茶" character. With proper aging, its potential is promising, especially given its current attractive price.



Lot 105

倉數總
儲量重
：：量
乾倉一筒約
：：七片2
：：片3
：：片4
：：片8
：：片8

八十年代末 厚紙 88 青餅 · 乾倉

7 Pieces of 88 Pu-er Tea Cake in Thick Wrapping
Circa Late 1980s

估價：HKD 400,000 - 700,000

年份：1980 年代末
工序：生茶
茶廠：勐海茶廠

此為八十年代末厚紙版88青，為早期版本，乾倉保存，狀態完好，7542配方。勐海茶廠於1989年前多數使用厚紙包裝，1989年後轉用薄紙外包。88青餅生產年份橫跨厚薄外包紙交替期。三十多年陳化後，茶湯質感強勁，口感蘭樟香，兩頰生津、茶韻出眾。

This lot is an earlier version with thick cotton packaging. Since 1989, Menghai Tea Factory has transitioned from thick to thin cotton paper, leading to different packaging styles. After aging in a dry warehouse, the tea reveals a unique orchid and camphor fragrance, highlighting its excellent aging transformation.



首批7572

乾倉



此七十年代首批7572青餅(大口中版本)一筒七片，乾倉保存，原筒原包，原裝細麻繩捆綁，配以早期外包裝風格：大口中版本，美術字尖出內飛，紙薄易破損，餅形寬闊，原料選自勐海七級大葉茶菁，屬極少數實驗性質的7572大葉生茶餅。由香港利安茶行向雲南省茶司訂購，勐海茶廠製作，總產量235支。半世紀陳化，茶氣出眾，陳香味濃，帶梅子香，大葉青茶，老韻漸增，別具勐海特色的甜潤風韻。存放猶久茶性轉化空間大，加上產量不多，別具收藏潛力。

This lot represents the first batch of 7572 and has been preserved in a dry warehouse. The packaging features fine hemp rope, thin cotton paper, and a fine print inner ticket. These large tea cakes are an early experimental product made from grade 7 large leaves, with a limited production of only 235 tubes. The brewed tea releases a prominent aroma with remarkable aged notes and a fragrant plum scent. Due to its rarity and potential for transformation, this lot holds unique collectible value.

Lot **106**

七十年代 首批 7572 青餅 (大口中版本) · 乾倉

7 Pieces of First Batch 7572 Pu-er Tea Cake
Circa 1970s

估價: HKD 800,000 - 1,200,000

倉儲：乾倉
數量：一筒七片
總重量：約 2398g

年份：1970年代
工序：生茶
茶廠：勐海茶廠



純乾八八青



此七片八十年代末88青餅，純乾倉/乾倉存儲，大餅頭，品相良好，其中兩片非原包。以勐海茶廠八十年代7542配方生產，茶餅以中壯葉為主體，嫩芽鋪面，三十多年純乾倉陳化後，有經典梅子香韻，質感強勁厚重，生津回甘快，乃別具傳奇色彩的純乾倉概念茶之鼻祖，茶氣剛強，轉化潛力大，純乾倉方式大規模倉儲的第一批有年份的老茶，是收藏投資的理想之選。

This lot is well-preserved in absolutely dry or dry storage. The larger tea cakes are in excellent condition despite two of which are not in original packaging. The brewed tea has a strong flavour and a wild fragrance of plum and camphor. This batch is significant as it represents the first batch of Pu-er aged under absolutely dry storage in a large scale, making it an ideal choice for collectors and investors.

Lot **107**

八十年代末 88 青餅 · 純乾倉 / 乾倉

7 Pieces of 88 Pu-er Tea Cake
Circa Late 1980s

估價：HKD 680,000 - 1,200,000

倉儲：純乾倉 / 乾倉
數量：七片
總重量：約 2415g

年份：1980年代末
工序：生茶
茶廠：勐海茶廠



厚紙八五八

乾倉

此厚紙8582兩筒共十四片，乾倉儲存。品相完美，厚紙原包，陳韻表現上佳，市場甚為追捧。厚紙8582青餅最初由香港南天公司向勐海茶廠訂製，堪稱中期茶中的精品。此茶採用五至八級粗壯新老茶菁拼配緊壓。猶以七、八級為主。正是這些經歷了數十年轉化的粗壯老料，為8582青餅帶來了無盡的回甜與豐富的層次，令其成為陳茶史上知名度最廣的茶品之一。

This lot is preserved in a dry warehouse. It is a custom order by Hong Kong Nantian Trading Company, using a blend of grade 5 to 8 coarse leaves, primarily grade 7 to 8. After few decades of aging, they have developed rich layers of flavor with lingering sweetness, reminiscent of Yin Grade teas. It is revered as a premium mid-term Pu-er tea, making it one of the most well-known teas in the Pu-er tea history.



Lot **108**

八十年代 厚紙 8582 青餅 · 乾倉

14 Pieces of 8582 Pu-er Tea Cake in Thick Wrapping
Circa 1980s

估價：HKD 1,400,000 - 2,200,000

倉儲：乾倉
數量：兩筒(共14片)
總重量：約2374g
2432g

年份：1980年代
工序：生茶
茶廠：勐海茶廠





Lot 109

倉數	總重量
：兩筒(共14片)	：約2615g
：乾倉/自然倉	：2632g

97 黃印青餅 (8582 配方) · 乾倉 / 自然倉

14 Pieces of Yellow Mark 8582 Pu-er Tea Cake 1997

估價：HKD 120,000 - 200,000

年份：1997 年
工序：生茶
茶廠：勐海茶廠

此1997年黃印青餅兩筒十四片，乾倉/自然倉儲存，勐海茶廠8582配方，大口中小七版，手工蓋黃印，薄棉紙外包紙，部分見茶油，原包狀態，稍見蟲蛀，其中一筒黑色鐵絲包裹。茶餅條索金黃，餅型厚實，1997年香港茶倉流出共約600支。此茶餅以八十年代中後期8582茶菁壓餅，於1997年出產，每片的重量為375克，多年陳化，茶氣茶韻出，樟香帶蘭香，是九十年代茶品中特色茶品。

This lot is in its original packaging and has been preserved in a dry or natural warehouse. The thin cotton paper features special "口" and "七" characters and yellow "茶" character, with some showing signs of tea oil. One tube has insect damage and is wrapped in black iron wire. Each piece weighs 375g with a blend of the 8582 formula. The tea cakes develop rich camphor, making it unique among 1990s products.



Lot 110

倉數	總重量
：兩筒(共14片)	：約2681g
：偏乾倉	：2615g

首批 99 易昌號 (宋體精品)

14 Pieces of Yi Chang Hao Pu-er Tea Cake 1999

估價：HKD 120,000 - 200,000

年份：1999 年
工序：生茶
茶廠：昌泰茶廠

此首批99易昌號(宋體精品)，兩筒共十四片，偏乾倉儲存，99易昌號是昌泰茶行首批以古法石模技術壓餅，餅型較小，選用典型易武野放古樹茶菁。茶味及陳化表現出色。經過廿年陳化的99易昌號，舌底生津，滋味飽滿，充份展現易武大樹茶獨特茶韻。

99 Yi Chang Hao is the first batch of Pu-er tea produced by Changtai Tea Company Ltd. It uses high-quality tea leaves, offering excellent flavor and transformation. The taste is rich with no bitterness and remains strong even after multiple brews. This lot has been preserved in a mildly dry warehouse and features an inner ticket.





Lot 112

倉數總
儲量重
：：約
乾倉一筒 2
七片 3
4
1
g

八十年代 厚紙 7542 青餅 · 乾倉

7 Pieces of 7542 Pu-er Tea Cake in Thick Wrapping
Circa 1980s

估價：HKD 200,000 - 380,000

年份：1980 年代
工序：生茶
茶廠：勐海茶廠

此八十年代厚紙7542青餅，一筒七片，乾倉原包，狀態完美，使用4級茶菁，幼嫩芽葉撒面，茶芽灑面，厚棉紙外包，朱砂紅八中內飛。市場多以細嫩茶芽為上品，故厚紙7542屬較高檔茶品。經數十年陳化，茶氣純正，滋味回甘，層次感強，待適時轉化後，茶韻茶氣將益長。厚紙7542開啟了茶葉量產時代，品質也趨穩定，具有收藏潛力。

This lot is in its original packaging and has been stored in a dry warehouse under excellent conditions. The tea cakes are wrapped in thick cotton paper with an inner ticket printed in vermilion ink. Made using the 7542 formula with grade 4 leaves and tender buds. 7542 represents the beginning of mass production and consistent quality, enhancing its collectible value.



Lot 113

倉數總
儲量重
：：約
乾倉一筒 2
七片 3
7
9
g

八十年代末 88 青餅 · 乾倉 / 偏乾倉

7 Pieces of 88 Pu-er Tea Cake
Circa Late 1980s

估價：HKD 400,000 - 700,000

年份：1980 年代末
工序：生茶
茶廠：勐海茶廠

此88青餅一筒七片，薄棉紙外包，外包裝稍不完整，紙張見蟲蛀，見勐海內飛，以中壯葉為主體，嫩芽鋪面，間以少量粗老葉製成。經近三十多年陳化，88青茶質愈見成熟。特殊梅子香與樟香交織。茶湯質感強勁厚重，野香誘人，生津回甘快，茶韻變化無窮，贏得市場賞識。

This lot has been stored in a dry or mildly dry warehouse, wrapped in slightly incomplete thin cotton paper showing insect signs. It mainly contains medium-sized leaves, with tender buds on top and some coarse leaves mixed in. The brewed tea offers a wild fragrance of plum and camphor, gaining market recognition.

雪印青餅

乾倉



雪印青餅，一筒七片，乾倉/自然倉儲存，軟竹殼包裹，外包裝完整，餅頭較小，硃砂紅，屬特殊形製產品，短內票，厚棉紙，「小口中」厚棉紙包裝，「茶」字為粉綠色手工蓋印，品相良好，以7532為配方，餅面細芽多且芽白如雪，茶以三至六級茶菁原料混拼，面裡一致，雪印乃勐海茶廠出品中為最細嫩的茶品。茶質陳化優秀，其特別的口感深受到市場歡迎。香氣口感幽雅，表現細膩，留韻持久；帶油樟香的滋味甘滑醇厚。

This lot has been stored in a dry or natural warehouse. It is a special order featuring a short inner ticket, thick cotton paper, a special "中" character, and a pale green "茶" character. Following the 7532 formula, these smaller tea cakes are made from grade 3 to 6 tender young leaves, making them the most delicate teas from Menghai Tea Factory, with limited production. The elegant taste and lingering camphor aroma have made it highly desirable among tea enthusiasts.

Lot **114**

八十年代初 雪印青餅·乾倉 / 自然倉

7 Pieces of Snow Mark Pu-er Tea Cake
Circa Early 1980s

估價：HKD 400,000 - 800,000

總重量：約 2316g
數量：一筒七片
倉儲：乾倉 / 自然倉

年份：1980年代初
工序：生茶
茶廠：勐海茶廠





Lot **115**

倉數總
儲量重
：：量
乾倉：約
/自然倉 一筒七片 2400g

八十年代 下關繁體字 8653 鐵餅·乾倉 / 自然倉

7 Pieces of Xia Guan 8653 Pu-er Tea Cake
Circa 1980s

估價：HKD 120,000 - 200,000

年份：1980 年代
工序：生茶
茶廠：下關茶廠

此八十年代下關繁體字8653鐵餅共七片，乾倉/自然倉儲存，五級茶菁為原料，略帶粗狀大葉，條索分明，壓餅較松，外包紙略薄，呈網格紋紙，略有纖維質，口感與簡鐵相若，香氣承下關茶特有花蜜濃香，甜度較高，近四十年陳化，茶香有活性，老茶味明顯。茶質厚重，陳香濃郁，略帶樟香，茶湯入口，水質厚潤，帶老韻。

This lot is made with grade 5 tea leaves and has aged in a natural or dry warehouse. The tea cakes are loosely compressed, and the outer packaging is slightly thin, made of grid-patterned paper with fiber. The brewed tea is rich and showcases a distinctive floral aroma with honey-like notes, typical of Xiaguan teas.



Lot **116**

倉數總
儲量重
：：量
偏乾倉：約
/自然倉 一筒七片 2267g

八十年代 厚紙 7542 樟香餅

7 Pieces of 7542 Camphor Pu-er Tea Cake in Thick Wrapping
Circa 1980s

估價：HKD 200,000 - 350,000

年份：1980 年代
工序：生茶
茶廠：勐海茶廠

此八十年代厚紙7542樟香餅，一筒七片，偏乾倉/自然倉儲存，硃砂紅字特厚棉紙，原包裝完整，外包紙幾乎沒有破損，其中五片沒有大票，竹殼上貼有茶莊出售標籤：「1986年·雲南·勐海茶廠·厚紙7542樟香餅」。以4級茶菁拼配。經四十年陳化，舊樟木香，陳香撲鼻。帶點梅樟香，滋味醇厚。

This lot is in its original packaging and has been stored in a mildly dry or natural warehouse. The packaging features thick cotton paper, vermilion printing, and a bamboo shell with a label. The tea cakes have developed a fragrance of old camphor wood, which becomes more pronounced after multiple infusions.

乾倉八五八二



此八十年代薄紙8582青餅，一筒七片，乾倉保存，其中三片有打開檢驗，保存狀態良好，蘋果綠八中茶字，薄格紋紙外包、餅頭較大，餅身厚實，以五至八級粗壯茶芽拼配，以七八級為主。乾倉陳化數十年後，滋味純正、回甘強烈。8582青餅是香港南天貿易公司於1985年起向勐海茶廠訂製茶品，流通量大，廣為人知，8582配方特別提出需配以粗壯茶菁。備受香港市場青睞，是當時各茶庄主要的銷售茶品，近四十年陳期，茶氣十足，樟香味強，可媲美印級茶。

This lot has been preserved in dry storage and is in good condition, with three pieces opened for inspection. The tea cakes are larger and thicker, wrapped in patterned thin paper featuring an apple green "茶" character. The 8582 formula, developed since 1985 through comparisons with older teas, uses higher quality grade 5 to 8 coarse tea buds. Considered a classic among 1980s teas, it exhibits a robust flavor and strong camphor aroma after nearly 40 years of aging, comparable to Yin Grade Pu-er.

Lot **117**

八十年代 薄紙 8582 青餅 · 乾倉

7 Pieces of 8582 Pu-er Tea Cake in Thin Wrapping
Circa 1980s

估價：HKD 480,000 - 800,000

倉儲：乾倉
數量：一筒七片
總重量：約 2397g

年份：1980年代
工序：生茶
茶廠：勐海茶廠





Lot 118

倉數總
儲量重
：：約
偏一筒
乾七片
倉七片
0g

八十年代初 73 青餅

7 Pieces of 73 Pu-er Tea Cake
Circa Early 1980s

估價：HKD 400,000 - 700,000

年份：1980 年代初
工序：生茶
茶廠：勐海茶廠

此73青餅，偏乾倉保存，原包保存，餅身完整，餅身較小，薄格紋紙外包，一筒七片為軟竹殼，「大口中」及中央的茶字為手工蓋綠印。73青採四級茶菁拼製而成，餅面灑滿幼嫩芽頭，裡茶肥壯、茶氣濃郁、湯色栗紅且透亮，口感蘭樟香明顯，兩頰生津、回甘深長、滋味濃郁厚重。經近四十年的陳化，陳韻茶氣十足，大口中字版系列，標準化生產前茶品，風格別樹一幟，備受追捧的勐海茶品之一。

This lot has been stored in a mildly dry warehouse and comes in its original packaging, featuring thin patterned paper with a special "中" character and green "茶" character. The tea cakes are relatively small, made from grade 4 leaves with tender buds on top. They have developed a rich aroma with noticeable orchid and camphor notes. This version produced before standardization, showcases a distinctive style that is highly sought after.



Lot 119

倉數總
儲量重
：：約
乾一筒
倉七片
0g

八十年代 厚紙商檢茶 (8582 配方) · 乾倉

7 Pieces of 8582 Pu-er Tea Cake in Thick Wrapping
Circa 1980s

估價：HKD 220,000 - 380,000

年份：1980 年代
工序：輕度發酵
茶廠：勐海茶廠

此一筒七片的厚紙商檢(8582配方)茶，乾倉儲存，輕度發酵，包裝狀態完好，採用五至八級粗壯新老茶菁拼配，外形厚實，餅面條索肥壯。竹殼上貼有「中國商檢」綠色橢圓形貼紙，量少而質佳。1985年勐海茶廠允許接受私人訂單，第一批訂製茶品及香港南天公司訂製的商檢8582青餅，別具有劃時代意義的產品。經數十年陳化，富印級茶韻，備受追捧。

This lot contains a blend of grade 5 to 8 coarse and tender leaves that have been lightly fermented. The bamboo shell features a green circular sticker labeled "China Commodity Inspection." After aging in a dry warehouse, it has developed a flavor similar to Yin Grade teas. This lot is the first custom order from Hong Kong Nantian Trading Company, adding significant value.





Lot 120

倉數總
儲量重
：：：
傳一約
統筒2
香七4
港片6
倉6
g

七十年代 大藍印圓茶

7 Pieces of Big Blue Mark Pu-er Tea Cake
Circa 1970s

估價：HKD 200,000 - 350,000

年份：1970 年代
工序：熟蒸發酵（七分青）
茶廠：勐海茶廠

此七十年代大藍印圓茶一筒七片，傳統香港倉保存，標準七十年代茶品包裝特色：大口中版，厚棉紙外包，餅身較厚大。配茶使用的茶葉較粗，是勐海茶廠最後一批用古董茶為原料的茶品，也是最早期採用具實驗性質發酵技術。近半世紀陳化，樟香藥香交錯，陳韻與日俱增，大葉茶菁後續陳化潛力可期。

This lot has been stored in a traditional Hong Kong warehouse and features thick tea cakes with a special "中" character on the packaging. It represents the last batch produced by Menghai Tea Factory using antique tea leaves and was one of the first to use experimental fermentation techniques. The tea exhibits notes of camphor and medicinal aromas, suggesting potential for further aging transformation.



Lot 121

倉數總
儲量重
：：：
乾一約
倉筒2
：七3
：片8
：9
：g

六十年代 昆明鐵餅·乾倉

7 Pieces of Kunming Pu-er Tea Cake
Circa 1960s

估價：HKD 500,000 - 800,000

年份：1960 年代
工序：生茶
茶廠：昆明茶廠

此六十年代昆明鐵餅，一筒七片，原牛皮紙筒，乾倉保存，包裝完整，市場上多為傳統或自然倉，乾倉狀態屬少見，餅身緊壓，膠質豐富，口感強勁，陳化六十餘年，茶韻十足，為昆明茶廠代表作。昆明鐵餅是具有濃厚印級茶系風格的茶品，而當時所有先進的技術及制茶工藝師皆集中於雲南昆明，是印級茶的繼承者，同樣是鐵餅普洱茶的開端。

This lot is wrapped in a kraft paper tube and has been well-preserved in dry storage, which is rare since most are stored in natural or traditional Hong Kong warehouses. Kunming had the most advanced techniques and tea artisans during its production, making this lot both a successor to Yin Grade Pu-er and the beginning of Iron Pu-er. It has developed a rich and mellow flavor.

小黃印 認真配方

Lot **122**

七十年代中期
小黃印青餅 — 認真配方

8 Pieces of Small Yellow Mark Pu-er Tea Cake
Circa Mid 1970s

估價: HKD 800,000 - 1,400,000

倉儲:	數量:	總重量:	年份:
自然倉/傳統香港倉	八片	約 3 3 1 1 8 8 3 1 7 8	1970年代中期
		3 0 4 8 3 2 0 5 8	工序: 生茶
		8 8 8 9 5 8	茶廠: 勐海茶廠

足吾所好
古董級普洱茶及佳茗專場

香港仕宏 2024 秋季拍賣會



此七十年代中期小黃印—認真配方共八片，自然倉/傳統香港倉保存，保存完整，邊有小碎，內飛有「認真配方」四字，經過近五十年的自然陳化，陳香氣韻足。五十年代末至七十年代中期，是雲南七子餅的一個里程碑，同時也是現代拼配普洱茶工藝的始祖。「綠字黃印」比「黃字黃印」生產年份更早，且可分為此拍品之「認真配方」、「適度發酵」及「加重萌芽」三種，其中以「認真配方」茶質最為優良且年份最早，數量也極少見。

This lot has been well-preserved in a natural or Hong Kong warehouse. This version of "Green Letter Yellow Mark" is an earlier iteration within the Yellow Mark series. The inner ticket indicates that it is the "Serious Formula", which is regarded as the finest and earliest variation compared to the others, namely "Moderate Fermentation" and "Intensified Sprouting". Due to its rarity, only a limited quantity is available.

藍印鐵餅

乾倉

此五十年代藍印鐵餅共兩片，乾倉保存，其中一片的包裝紙稍有破損，整體保存良好。鐵餅採用勐海茶菁為原料，條索粗壯緊實，配茶風格萌芽偏重，可見八中內飛埋於茶餅之內，餅型微向腹面拱成碗形，餅面金芽毫多，茶芽較為粗壯，屬「印級茶」中茶氣偏強之作，是上世紀五十年代經典代表茶品。茶品採用金屬模子壓製脫模而成，令鐵餅緊結，膠質更易提早釋放，後續發酵轉變緩慢，經七十年的陳化，茶湯的口感較傳統餅形更為濃厚，氣韻更足且充滿活性。

This lot is well-preserved under dry storage, despite showing slight damage to one of the packaging. The tea cakes are slightly curved towards the center and pressed with inner tickets. It is made from Yiwu tea leaves with sturdy strands and golden tea buds. With a slow transformation from using metallic molds, the tea has developed a richer mouthful than usual, making it a more prominent Yin Grade choice.

Lot 123

五十年代 藍印鐵餅·乾倉

2 Pieces of Blue Mark Pu-er Tea Cake
Circa 1950s

估價：HKD 550,000 - 800,000

倉數
儲量
：兩片

總重量：
約 323g
334g

年份：1950年代
工序：生茶
茶廠：勐海茶廠



早期大字紅印

乾倉

早期紅印圓茶，在當時之計劃經濟背景下，取得了原料選擇的主導權，易武茶山優良茶菁皆歸國營茶廠所有。因此，早期紅印精選猛臘最好的茶菁，嚴謹芽葉配比，配茶風格茶菁級數較高，萌芽比例重，並沿用傳統制茶壓模之法及壓製發酵方法，保證了印級古董茶餅擁有豐富細膩的口感，茶性剛烈飽滿，茶韻強烈。

此早期大字紅印青餅，大餅頭版，乾倉存放，餅形完整，大餅頭直徑達20-21cm。紙質選用手工長纖維棉紙，由手工拓木版印刷粗體大字可見屬早期粗體，保存良好，紙張稍有蟲蛀，見餅面烏潤油光，條索粗壯飽滿緊實，重量亦接近出廠時的狀態，重量十足，三片分別重352克、344克、338克。配茶格調，採用萌芽較重配法，其茶性較為剛烈，且茶氣更足韻味豐富。

它們來自一位資深普洱藏家，並於較早期進入普洱茶市場，本拍品為藏家精挑細選，且全部為早期大字紅印，該茶於藏家購入時部分有開驗過，確保為大字紅印。因其陳化品質卓越，歷經近七十多年，茶氣十足，生津極致、喉韻持久，濃郁芳香而不霸道，令人舌底鳴泉，唇齒留香。早期紅印之生產年代至今已逾半世紀，存世者無多，極具收藏價值。

Produced by state-owned factories, early Red Mark benefited from having obtained control over raw material selection, making it incomparable to tea cakes from private tea merchants. Using only the finest wild Yiwu tree leaves, with a rigorous bud-to-leaf ratio and higher grade, the tea cakes have a much stronger and more assertive flavor than other Red Mark Pu-er.

This lot is considered the "Big Tea Cake" version, with a diameter of 20-21cm. The paper is made from hand crafted long-fiber cotton and features hand printed bold characters, indicative of the early production style. The preservation is excellent in dry storage; the tea cakes remain in a complete round shape, with slight signs of insect damage on the packaging. Their weight is close to the original state, with three pieces weighing 352 grams, 344 grams, and 338 grams, respectively.

This collection comes from a seasoned Pu-er tea connoisseur who entered the market early on and includes a full range of early Red Mark Pu-er. Due to their exceptional aging quality, the tea has an intense complexity of flavors with a lasting sweetness, making them quite rare and highly valuable for collectors.

Lot 124

五十年代 早期大字紅印青餅·乾倉

3 Pieces of Early Red Mark Pu-er Tea Cake
Circa 1950s

估價：HKD 2,000,000 - 3,200,000

倉儲：乾倉	數量：三片	總重量：約
		334g
		352g
		338g

年份：1950年代或更早
工序：生茶
茶廠：佛海茶廠/勐海茶廠



大子綠印 甲級藍印

此五十年代原筒大字綠印及甲級藍印青餅，一筒七片，保存完好，乾倉儲存，十分難得。內有大字綠印以及甲級藍印兩個版本，是五十年代國營茶廠起步時期尚未完全規範化生產的時代印記。鄧時海在《普洱茶》一書中點評：「大字綠印青餅是早期紅印、同慶老號圓茶的繼承茶」。此拍品中的大字綠印圓茶取最優良易武正山茶菁，條索金黃，色澤油亮，配茶風格萌芽偏重，茶面黃芽滿佈，陳化後香韻層次豐富。甲級藍印亦是印級經典，藍印使用優良易武正山茶菁為料，配茶風格萌芽重，餅型較大，條索金黃粗壯，芽葉完整清晰，茶餅埋有「八中一茶」內飛。包裝印有甲級字樣，屬存世數少之早期藍印。經半個世紀陳化，茶氣強勁，盡顯陳年茶韻，陳香樟香交織，滋味純正，滿口生津，收藏品飲皆宜。

This set consists of both Bold Characters Green Mark and Grade A Blue Mark, which was common practice in the 1950s before standardized production. The Bold Characters Green Mark was praised by Mr. Deng Shihai as the successor to early Red Mark and noted for its connection to Tong Qing Hao. The tea cakes have a glossy golden finish and exhibit rich layers of aged and camphor fragrances. These tea cakes are larger and pressed with top-quality golden tea leaves and an inner ticket. After 50 years of aging, they offer a strong aroma with intertwined aged and camphor notes, making it suitable for both tasting and collection.

Lot 125

五十年代 原筒大字綠印及 甲級藍印青餅·乾倉

7 Pieces of Green Mark and Grade A Blue Mark Pu-er Tea Cake
Circa 1950s

估價：HKD 2,200,000 - 3,800,000

總重量：約 2397g
數量：一筒七片
倉儲：乾倉

年份：1950年代
工序：生茶
茶廠：勐海茶廠



金山樓舊藏 無紙紅印



此五十年代金山樓舊藏無紙紅印一片，純乾倉保存，以棉紙外包有「金山樓舊藏 無紙紅印」，品相完好，嚴選勐臘野放老樹茶菁，配以舊式技藝壓模，餅型厚實，條索粗壯，精工揉製，茶面油亮，兼蘭樟香。紅印為印級茶之首，選料精嚴，地位不凡。無紙紅印因不見外包紙而得名。因早年香港茶樓大量購入紅印茶品後，蓄意將包裝紙剝除以利放倉與銷售。金山樓茶倉存放陳年普洱超過數十年，其牆面、地下都瀰漫著陳舊的普洱茶氣，形成一個理想存放普洱茶的陳化環境。無紙紅印滋味優勝，累年消耗之餘，存世較少，經七十年陳放，茶韻層次豐富，茶氣剛強而變化豐富，蘭香馥鬱兼有野樟香，純乾倉無紙紅印市場少見，十分難得。

This lot is preserved in cotton paper and has been stored in an absolutely dry warehouse. Using traditional pressing techniques, the tea cake is thick and compact with a glossy appearance, offering hints of orchid and camphor aroma. Gam San Lau is one of the traditional tea houses with its own storage warehouse in Hong Kong. It stored a large quantity of top-quality Pu-er tea when Hong Kong was a vital transit point for worldwide tea exports during the late Qing Dynasty. Due to the lack of wrapping and the underground warehouse's abundant storage of Pu-er tea cakes, the teas affect each other's flavor and transformation, resulting in a unique "Hong Kong Warehouse" flavor.



Lot 126

五十年代 金山樓舊藏 無紙紅印·純乾倉

A Piece of Gam San Lau Red Mark Pu-er Tea Cake without Wrapping
Circa 1950s

估價：HKD 380,000 - 700,000

年份：1950年代
工序：生茶
茶廠：勐海茶廠
總重量：約334g
數量：一片
倉儲：純乾倉



一見喜所好



金山樓舊藏

早期紅印



罕見原筒 大字紅印

香港仕宏 2024 秋季拍賣會



罕見原筒 大字紅印

金山樓倉庫存茶歲久，牆面、地下皆瀰漫濃厚茶氣，並通過舊存上品老茶催化新茶，生生不息，形成獨特風味。二十世紀末因時代變遷，香港一批老茶樓陸續停業。金山樓主人亦赴美經商停業，倉庫封鎖。1996年，茶樓主人返港清倉，盤出了一批珍貴陳年普洱，銷往臺灣及海外。此批老茶進入市場，直接帶動了品飲收藏普洱陳茶的熱潮，金山樓舊藏亦成為普洱茶收藏界的傳奇招牌。

金山樓所藏普洱茶中，以紅印最為典型。「紅印」上承號級茶之精魂，為印級茶之銘心絕品。紅印茶製作之時，舊式茶號關張未久，老匠尚在，故能傳承號級茶之技藝靈魂，又得國營茶廠原料調配之便，可謂天時地利人和。舊時香港茶樓購藏普洱茶餅時，往往將包裝紙剝除以利放倉與銷售，金山樓亦採用此種做法，故市面所見金山樓舊藏紅印多無外包紙，坊間稱為無紙紅印。

歷經近一甲子的陳期，整片紅印依舊呈現驚人的生命力，茶氣十足，為紅印是普洱茶界中印級茶始祖，被譽為「可以喝的古董」。勐海茶廠廠長唐慶陽先生曾說：「打從范和鈞時期開始，紅色茶字的普洱圓茶，一直都是選用猛臘最好茶菁做的。」經七十年陳化，氣韻豐富，飲後舌底鳴泉。不可複製的倉儲環境和傳奇經歷，賦予其獨一無二的珍貴風味與收藏價值，得到市場的熱烈追捧。早期紅印傳奇舊藏，罕見原包裝更添不凡身價，極具投資收藏潛力。

Among the Pu-er teas stored at Gam San Lau, Red Mark Pu-er is the most iconic. Known for embodying the essence of Hao Grade Pu-er, Red Mark Pu-er was crafted when traditional tea houses were closing, allowing old artisans to pass down their skills. With the advantage of using quality materials from state-run tea factories, it represents a perfect blend of timing and craftsmanship. In the past, Hong Kong tea houses often removed the outer packaging for storage and sales, resulting in many Red Mark Pu-er being sold without wrapping paper.

This lot is an extremely rare collectible, preserved in a dry warehouse and presented in its original packaging and bamboo shell. The packaging showcases bold prints, characteristic of early printing techniques. Recognized as the ancestor of Yin Grade Pu-er, it features high-quality Yiwu large golden leaves with distinct notes of orchid and wild camphor.

After 70 years of aging, it reveals a rich and complex flavor with a lingering sweetness. The unique storage conditions and the storied history of Gam San Lau Red Mark Pu-er, especially in its rare original packaging, significantly enhance its value and investment potential, earning it the title of "a drinkable antique."

五十年代 金山樓舊藏 原筒 早期 大字紅印青餅 · 乾倉

足吾所好 古董級普洱茶及佳茗專場

乾倉

此原筒早期大字紅印青餅，有原筒原包外包裝紙，較無紙紅印更加罕見，乾倉狀態上佳，可謂稀見至珍之神品。乾倉存儲，狀態良好，條索金黃飽滿，茶氣剛強。五十年代的早期大字紅印，是印級茶鼻祖，外包紙八中茶字體尤為粗大，是最早期刻板印刷之特點。大字紅印使用頂尖易武大葉茶菁和傳統工藝，茶菁來自易武茶山大葉種茶樹，並滲有蘭香或野生樟香味。

金山樓於 1928 年開設於上環，與陸羽茶室同在德輔道中，以水滾茶靚著稱，賓至如雲，又在油麻地新填地街開設「新金山」酒樓。六十年代在新填地街另側自置物業，樓高四層，號稱「大金山」，為名流雅士匯集之地，頂樓設茶倉，歷年自雲南採購大批優質號級、印級普洱茶，以供售賣，為多年後的茶史傳奇埋下伏筆。

This lot is an extremely rare collectible, preserved in a dry warehouse and presented in its original packaging and bamboo shell. The packaging showcases bold prints, characteristic of early printing techniques. Recognized as the ancestor of Yin Grade Pu-er, it features high-quality Yiwu large golden leaves with distinct notes of orchid and wild camphor.

Gam San Lau opened in 1928 alongside Lu Yu Tea House and quickly gained fame for its excellent tea. In the 1960s, it moved to a four-story building that included a tea warehouse sourcing Yunnan Hao Grade and Yin Grade Pu-er for sale, contributing to the legendary status of Gam San Lau.

Lot 127

五十年代 金山樓舊藏 原筒 早期 大字紅印青餅 · 乾倉

7 Pieces of Gam San Lau Red Mark Pu-er Tea Cake
Circa 1950s

估價：HKD 4,500,000 - 8,000,000

倉數總
儲量重
：：：
乾一筒
倉七片
： 2420g

年份：1950年代
工序：生茶
茶廠：佛海茶廠 / 勐海茶廠



三十年代 河內號

乾倉

三十年代河內號紫標七片，故以北越茶菁為料，乾倉保存，條索粗壯見茶梗，餅形較小(約18cm)，條身黝黑，餅身堅實，陳化已逾半世紀。河內號無內票，有署越南文的橫式紫內飛，印有「XUONG CHE HANOI CHE BANH」。這些茶品一般銷售往馬來西亞、新加坡等東南亞地區。河內圓茶越南北部與雲南省為鄰，兩地處於相同緯度上，可說是雲南地勢的延伸，茶菁茶性相似。河內圓茶的茶氣沉穩，富印級陳韻，茶湯清香，樟香氣強，茶性接近雲南易武茶菁。

This lot is from the northern region of Vietnam. He Nei Hao is renowned for its delicate yet robust aroma, reminiscent of Yin Grade Pu-er. The tea cakes are tightly compressed into a smaller size with a dark appearance. They have been well preserved in a dry warehouse, offering a smooth taste with a distinct camphor aroma, similar to the characteristics found in Yiwu tea leaves.



Lot 128

三十年代 河內號 紫標·乾倉

7 Pieces of He Nei Hao Pu-er Tea Cake (Purple Ticket)
Circa 1930s

估價：HKD 450,000 - 800,000

倉數	數量	總重量
乾倉	七片	約 211g
	195g	237g
	228g	214g
	222g	220g
	222g	

年份：1930年代
工序：生茶
茶廠：河內號茶莊

百年可以興



足吾所好
古董級普洱茶及佳茗專場

《西雙版納傣族自治州縣誌》：1926年至1941年期間，在佛海和南嶠兩縣，就有大小茶莊三十多家。其中有七家，鴻濟茶莊、恒盛公茶莊、可以興茶莊……可以興磚茶就是以細黑條索，上好的佛海普洱茶菁製造，代表了黑色普洱茶葉的標本。1926年雲南玉溪人周文卿於佛海曼嘎街創辦可以興茶莊，為雲南著名百年老字號茶莊。三十年代為將茶磚遠銷四川及海外，製成方形「十兩磚」生茶磚，為現存最早普洱磚茶。「十兩磚」重約375克，有異於當時及後來所流行重約250克的六兩半茶磚，是近代茶史所獨見，極為珍罕，且「十兩」有十全十美之吉祥寓意，收藏餽贈皆宜。1927年後的可以興茶磚存量甚少，統計數據顯示，十五年前，可以興茶磚存世僅3件，每件160片，即480片，經十五年的消耗，目前全球存留數量或許只剩下幾十片。此百年可以興茶磚屬早期版本，是少見的生茶磚，乾倉存儲，葉底烏黑油亮有光澤，狀態優良，見紅色內飛，唯字跡因時日久而模糊不清。茶菁嚴選勐海(佛海)攸樂茶山大葉種喬木春茶為主料，攸樂茶山乃古六大茶山之首，條索細黑，勐海茶以黑色為貴，可以興正是黑色普洱茶標本，茶湯呈栗紅，香氣濃鬱，散發出野樟香，水性活而滑，回甘生津，茶韻悠長，極具收藏價值，號稱「茶磚之王」。可以興磚茶存量甚少，可與號級圓茶比肩，稀見珍茗，久經歲月雕琢，更顯品格不凡。

In the 1930s, Ke Yi Xing created the 375g (10 taels) bricks to facilitate transportation, the number "ten" representing wishes for unity, harmony and happiness. These 375g tea bricks are unique in Pu-er tea history, differing from the more common 250g bricks that emerged later. Made from thick, coarse spring leaves, these bricks are considered a prime example of black Pu-er. Due to limited quantities, Xiang Tea House is often referred to as the "King of Tea Bricks". Up to this day, Ke Yi Xing remains the only raw tea brick in the market. After aging in dry storage, the brew offers a smooth taste with a chestnut aroma and lingering sweetness, making it highly collectible and valuable. Since 1927, the quantity of Ke Yi Xing has dwindled significantly; only three batches remained 15 years ago, totaling 480 pieces. It is believed that only a few dozen remain today, making them a treasured piece of history and art.



茶磚背面圖



Lot 129

百年 早期 可以興茶磚·乾倉

A Piece of Early Ke Yi Xing Pu-er Tea Brick
Circa 1927

估價：HKD 700,000 - 1,200,000

總重量：約364g
數量：一塊
倉儲：乾倉

年份：約1927年左右
工序：生茶
茶廠：可以興茶莊



約15x10x3cm

香港仕宏2024秋季拍賣會

百年雙獅同慶號

足吾所好
古董級普洱茶及佳茗專場

同慶號總發行設於雲南石屏寶秀街，創號後即在易武山中開辟茶園，亦採買茶菁，製成後轉運至石屏總發行，新茶售賣之餘入倉封存陳化，珍藏待沽。同慶號選料嚴謹，僅擇取「陽春細嫩白尖」，普洱茶六選六棄精細作法之首倡者；工藝亦極講究，重金延聘高手茶師，精工熏揉，故所出普洱茶品質超群，紅濃芳香，創號之初即聞名遐邇，號稱「易武正山陽春茶」。因選料精當、製作講究、經營誠信，同慶號有口皆碑，聲勢日隆，清同治至民國初年趨於鼎盛。民國四年(1915年)，同慶號躋身雲南茶莊之首，年出茶五六百擔，流水三十餘萬，騾馬三十餘匹，駝牛四十餘頭，茶品遠銷海內外，香港、臺灣、暹羅、馬來西亞等地亦設分號。當時時人評點雲南茶業翹楚，同慶易武有劉葵光、陳雲曼臘有陳石雲，號稱一鎮南、一蓋北。此拍品為早期五色旗版圓茶「雙獅同慶」，繼承了同慶號早期圓茶之優良工藝，採選典型民國初年易武茶區大葉種茶菁精工製作。此拍品保存狀況良好，內票下埋有紅內飛，其紙極薄。餅面較寬大而圓正，條索扁長緊結，金芽鋪面，茶面綠中帶紅，條索順時針轉，膠質略重，經百年陳化，陳韻十足，茶陳韻強，具經典易武茶香。與選用三至五級小葉種製成的「龍馬同慶」相比，「雙獅同慶」在香型和茶性上都更為強烈，著名茶人余秋雨先生曾說，同慶號裡，我只中意「雙獅」，可知其品質之卓越。

Shuang Shi Tong Qing Hao inherits the exceptional craftsmanship of early Tong Qing Hao teas, using only flat, elongated tender leaves from Yiwu, as indicated by the thin red inner ticket. This particular lot has been preserved in excellent condition. After aging for over a century in dry storage, the tea has developed a robust, long-lasting flavor, making it a rare and exceptional selection.



香港仕宏 2024 秋季拍賣會

Lot 130

百年 雙獅同慶號 (早期五色旗版) · 乾倉

A Piece of Shuang Shi Tong Qing Hao Pu-er Tea Cake
(Early Five Color Flag)
Circa 1920-1928

估價：HKD 800,000 - 1,400,000

倉儲：乾倉
數量：一片
總重量：約 301g

茶廠：同慶號茶莊
工序：生茶
年份：約 1920 至 1928 年間

百年鴻泰昌

此百年雙獅鴻泰昌·藍標圓茶，偏乾倉/自然倉存儲，是少見的雲南易武正山古董茶。鴻泰昌茶莊創建於1926年，原稱鴻昌號，創始人高鴻昌，初創於倚邦。是與宋聘、同慶號等同期的雲南普洱老字號。20世紀30年代，鴻泰昌因時局動盪而移師泰國設立分號，又在香港南洋設立代理公司。解放後鴻泰昌雲南總號併入國營合作社而告終，泰國分號則以北越和當地茶為原料持續生產，成為邊境普洱的代表。此前市場所見「鴻泰昌」圓茶多為泰國分號所製，近年始重新發現使用易武正山原料、雲南總號所製百年號級古董茶，十分珍貴，此拍品即其中一例。其商標與大名鼎鼎的「雙獅同慶號」皆採用雙獅五色旗標誌，另內票款式及餅型的寬厚度亦近似，應是1920年代的同期產品，故又有「雙獅鴻泰昌」之名。選用易武山大葉種喬木茶菁，加重萌芽，條索細長，金芽顯，油亮呈栗色。沖泡後茶湯栗紅有野樟香，味道微甜，陳韻潤喉，水性細膩，入口即化，茶氣強烈，葉底呈栗色。此拍品用料上乘，經百年陳化，茶氣富足而帶易武茶的甜潤，有經典野樟香，是不可多得的百年號級古董茶珍茗。

This lot is a rare Yiwu antique tea, preserved in a mildly dry or natural warehouse. Founded in 1926, Hong Tai Chang is renowned alongside brands like Song Pin Hao and Tong Qing Hao. In the 1930s, the company moved to Thailand, where it continued producing teas using local and Northern Vietnamese materials. Therefore most Hong Tai Chang teas available today come from the Thai branch, making this particular lot extremely valuable. Likely produced in the 1920s, it shares similarities with the famous Shuang Shi Tong Qing Hao, including its trademark, inner ticket design, and tea cake size. Crafted from high-quality Yiwu leaves and aged for a century, this tea offers a strong, sweet flavor with classic wild camphor notes, making it a treasure not to be missed.



Lot 131

百年 雙獅鴻泰昌·藍標

A Piece of Hong Tai Chang Pu-er Tea Cake (Blue Ticket)
Circa 1920s

估價：HKD 700,000 - 1,200,000

年份：1920年代
工序：生茶
茶廠：雲南鴻泰昌茶莊
總重量：約318g
數量：一片
倉儲：偏乾倉/自然倉

百年藍標宋聘

乾倉

清中期同治年間，石屏宋氏於倚邦開設宋聘號茶莊。江西人趙開乾則於同光年間，開設乾利貞商號，經營茶葉、棉花、滋補藥品等。1912年，因思茅瘟疫，乾利貞號亦遷至易武，1917年與宋聘號聯姻，稱乾利貞宋聘號，宋聘號精擅製茶，乾利貞長於經營，二姓聯姻合號後如虎添翼，合併擴大經營，成為易武首屈一指的大茶號，所製圓茶集兩家之大成，奠定號級茶「茶王」地位。此百年藍標宋聘號，為二姓聯姻後出品，商標圖上有藍色「乾利貞 宋聘號」及「貨真價實」字樣，故而得名。乾倉存放狀態尤佳，餅面油亮、條索厚壯，芽毫金黃，可見標準宋聘圓茶用料特征，嚴選雲南易武大葉種喬木茶菁，配茶風格別具匠心，加重尖芽，精工揉造，茶梗多在底部，有利陳化。品相完好，其外包玻璃紙未經開封，藍標內飛埋存於茶餅之中、內飛因歲月消磨以致圖文模糊，依稀可見如意瓶及其上所書春尖二字。茶餅面貼有著名茶人白水清先生的親筆簽名標籤：「清末極品宋聘號」。歷經百年歲月醞釀，陳年茶韻彰顯，茶氣、茶味皆臻於化境，茶氣磅礴與幽雅兼得，飲後有舌底鳴泉之妙，確為號級經典，彌足珍貴。

During the mid-Qing Dynasty, the Song family established Song Pin Hao Teahouse, specializing in tea, while merchant Zhao Kaiqian opened Qian Li Zhen, dealing in everything from tea to health supplements. In 1917, the two businesses merged, becoming known as Qian Li Zhen Song Pin Hao. While Song Pin specialized in tea production, Qian Li Zhen excelled in management, establishing its status as the "Tea King" of antique Pu-er teas. This lot showcases the standard Song Pin Hao blend, meticulously crafted from the large-leaf varietal of Yibang in Yunnan, featuring a glossy surface, robust stems, and golden buds. The stems are predominantly pressed at the bottom to aid fermentation, with only a small amount of buds sprinkled on top. The inner ticket is buried within the tea cake, with faintly visible characters for "Spring Tips" and graphics. This lot features a label with the famous tea master Mr. Bai Shuiqing's handwriting: "Exceptional Song Pin Hao from the Late Qing Dynasty". This century-old Song Pin Hao is a classic example of its kind, making it highly valuable and rare.



Lot 132

百年 藍標 宋聘號 (附白水清簽名) · 乾倉

A Piece of Song Pin Hao Pu-er Tea Cake Signed by Bai Shuiqing (Blue Ticket)
Circa 1917s

估價：HKD 1,000,000 - 1,600,000

倉儲：乾倉
數量：一片
總重量：約 322g

年份：約 1917 年代
工序：生茶
茶廠：雲南宋聘號茶莊



藍印鐵餅

此五十年代藍印鐵餅一筒共七片，偏乾倉/自然倉保存，保存完好，乃上世紀五十年代經典代表茶品，葉面金黃，茶氣十足。藍印鐵餅採用易武喬木茶菁為原料，採用當時新研發的製作工藝，取消布袋包揉壓，採用金屬模具直接壓製脫模而成。由於鐵餅緊結密實，新茶膠質更易提早釋放出來，使豐富的茶膠勻齊地分佈在茶葉表層，光澤鮮明。茶餅緊實令後續發酵轉變緩慢，經七十年的陳化，茶湯的口感較傳統餅形更為強烈，氣韻十足且充滿活性，回甘強勁，已逐漸達到最佳品飲時機。

This lot has been preserved in a mildly dry or natural warehouse under good conditions. It is a classic representative tea from the 1950s, made with Yiwu golden large leaves. Due to the tight pressing technique, a slow transformation has developed a uniform distribution of resin, resulting in a bright sheen. After 70 years of aging, the tea offers a richer mouthfeel with a lingering taste, gradually reaching its optimal drinking period.



Lot **133**

五十年代 原筒 藍印鐵餅

7 Pieces of Blue Mark Pu-er Tea Cake
Circa 1950s

估價：HKD 1,800,000 - 3,000,000

總重量：約 2333g
數量：一筒七片
倉儲：偏乾倉/自然倉

年份：1950年代
工序：生茶
茶廠：勐海茶廠

百年普慶號

此拍品為號級茶普慶號共一片，偏乾倉/自然倉儲存，保存狀態良好。普慶號也稱為「普天同慶號」，1911年辛亥革命勝利，滿清政府被推翻，普天同慶，故而得名。普慶號茶餅，不像其他號級茶在餅面埋貼內飛，僅在每一筒包裝內壓有一張商號內票。普慶號茶品早在1913年前已有生產。普慶號圓茶比一般普洱茶餅略小，分量亦較輕，約為271克左右。茶葉呈栗色，油潤度高，梗條較多，較為鬆散，茶之揉造方式不同，具茶後之布孔較小。沖泡後湯色栗紅透亮，入口醇厚順滑，且極富層次感，令人舌底生津湧泉相隨。著名茶人鄧時海曾提出普慶號圓茶據其香氣、陳韻、水性、生津判斷，茶性應屬於倚邦茶區的茶菁，不似易武茶區的茶菁特色。其身世亦頗具傳奇性。

This lot was created to commemorate the 1911 Revolution, also known as the "Pu Tian Tong Qing Hao," meaning "Joyous Celebration". The absence of an inner ticket is due to the unusual practice of inserting only one ticket for a stack of tea cakes instead of embedding a ticket in each individual tea cake. This tea cake is slightly smaller and lighter, weighing approximately 271g. Renowned tea expert Mr. Deng Shihai noted that the aroma, flavor profile, and overall character of Pu Qing Hao suggest it belongs to the Yibang tea area rather than the Yiwu area, adding to its legendary origins. This lot has been stored in a mildly dry or natural warehouse.

Lot 134

號級茶 普慶號

A Piece of Pu Qing Hao Pu-er Tea Cake
Circa 1913

估價：HKD 160,000 - 300,000

總重量：約271g
數量：一片
倉儲：偏乾倉/自然倉

年份：1913年前後
工序：生茶
茶廠：普慶號茶莊



原條孫義順字號老六安



「孫義順」是老六安中最为著名的茶號，孫義順竹篾是典型的民初手工織法，籃身較扁而寬，竹葉排列整齊有序，竹篾上蓋印「新安祁門 孫義順字號 正地道六安 揀選雨前芽蕊 上上貢尖」，倉儲得宜帶藥香，茶湯細膩，為六安中上乘佳品，可媲美號級皇者宋聘號，被譽為六安中的茶王，存世量稀少，留存下來的佳品更是碩果僅存。清代六安茶依然是皇家貢茶，至民國聲勢不減，人稱「安茶」，價格尚在普洱之上。又因其以竹籃裝盛，每籃一斤，每六籃以長竹簽編成一串如籠(龍)，故坊間稱其為「六安龍團」。六安茶製作繁複，貯存陳放至少三年香氣始出，民國年間各大茶號無力負擔六安茶之工序與陳期，轉而製作祁門紅茶，六安茶漸成絕響，直至1984年方因東南亞華僑與中醫界之請恢復生產。故市面所見六安茶多為八十年代以後產品，其滋味香氣與老六安茶不可同日而語，而老六安龍團首推孫義順。

Sun Yi Shun is the most famous brand of antique Liu An tea. Liu An tea is highly regarded; it remained a tribute tea until the Qing Dynasty and its price surpassed that of Pu-er teas during the Republic era. Sun Yi Shun features a bamboo basket with a typical handcrafted design from the early Republic era, characterized by its wide, flat, and orderly woven structure. As the finest Liu An brand, it is recognized as the "King of Liu An Tea". The production of Liu An tea is complex, requiring at least three years of storage for the aroma to fully develop. During the Republic era, major tea companies could not afford the lengthy processing and storage, leading them to shift to producing Qimen black tea instead. Liu An tea production nearly disappeared until it was revived in 1984 due to requests from the Chinese medicine community.

Lot **135**

三十 / 五十年代 原條
孫義順老六安 · 乾倉

6 Pieces of Sun Yi Shun Liu An Tea
Circa 1930s/1950s

估價：HKD 400,000 - 700,000

年份：	1930 / 1950年代
工序：	黑茶
茶廠：	安徽祁門
總重量：	約 2657g
數量：	一條六粒
倉儲：	乾倉

乾倉八馬

乾倉



此八十年代末88青餅共兩筒十四片，乾倉倉儲，7542是勐海茶廠20世紀1975年代研發的經典配方，以肥壯茶菁為裏，幼嫩芽葉撒面，使用四級茶菁為主，按比例配置而成，四十餘年陳化，茶餅表面狀態油亮，茶氣磅礴霸氣，回甘強勁，茶性剛強，韻味飽滿層次豐富，梅子韻帶蜜韻餘味。

This lot consists of 14 pieces of 88 pu-er tea stored in dry warehouse. 7542 is a benchmark tea product from the Menghai Tea Factory. The formula features robust tea buds at its core, with tender young leaves sprinkled on top, primarily blended with grade 4 leaves. After years of aging, the brewed tea has a strong flavor with a wild fragrance of plum and camphor.

Lot **136**

八十年代末 88 青餅 · 乾倉

14 Pieces of 88 Pu-er Tea Cake
Circa Late 1980s

估價：HKD 550,000 - 1,000,000

數量：兩筒(共14片)
倉儲：乾倉
總重量：約2378g
2351g

年份：1980年代末
工序：生茶
茶廠：勐海茶廠



厚紙八五八二



本拍品為八十年代厚紙8582青餅一筒共七片，偏乾倉/自然倉保存，稍有蟲蛀，原包狀態。餅型圓厚，餅面條索肥壯，鬆緊適中，茶質出色，以厚棉紙包裝。茶面用五至八級粗壯茶芽拼配，以七八級為主。經過四十餘年陳化及優良倉存之下，已經轉化至富有印級茶的韻味，可稱為中期茶中的精品。

This lot comes in its original packaging and has been preserved in mildly dry or natural warehouse. The relatively round and thick tea cakes are wrapped in thick cotton paper, showing signs of insect damage. They are made from a blend of grade 5 to 8 coarse leaves, primarily grade 7 to 8. After 40 years of aging, they have developed a flavor reminiscent of Yin Grade teas and are revered as a premium mid-term Pu-er tea.

Lot **137**

八十年代 厚紙 8582 青餅

7 Pieces of 8582 Pu-er Tea Cake in Thick Wrapping
Circa 1980s

估價：HKD 680,000 - 1,200,000

倉儲：偏乾倉/自然倉
數量：一筒七片
總重量：約2402g

年份：1980年代
工序：生茶
茶廠：勐海茶廠





嫩尖正原度 原笠老六堡

五十至六十年代嫩尖正原度舊六堡，原笠保存，篾外有綠字嫩尖標識。六堡茶原產於廣西產於蒼梧縣六堡鄉，使用獨特的蒸製工藝，即將烘乾的茶葉，分等級投入木桶中蒸軟，然後攤入方底圓身的竹篾中，進倉自然乾燥，最後再存放一兩個月進行陳化始成，以「紅、濃、醇、陳」而著稱，具有特殊的檳榔香味。蒼梧縣誌稱其「味厚，隔宿不變」。清嘉慶年間被欽點為貢品，更是身價倍增。清朝初期，在廣州、潮州一帶，六堡茶開始流行。從清康熙年間開始，在兩廣湧現了一批六堡茶字號。乾隆二十二年(1757年)，清廷只留廣州一個口岸通商，於是十三行獨佔中國對外貿易，六堡茶也由此出口外銷。香港開埠後也成為六堡外銷的重要出口，為滿足市場需求誕生了香港六堡。香江別造風味獨具早年香港市場上六堡茶多與普洱茶拼堆，或轉口外銷。香港茶商採購茶菁，經過適度發酵蒸壓及打堆後裝笠，成為獨具特色的香港六堡茶，外銷東南亞，頗受市場歡迎。香港加工的六堡茶條索粗細相間，陳化風味與港倉普洱相似，茶湯柔和順口，風味複雜，具有多種茶品特徵，十分獨特。此拍品即為原裝原笠香港老六堡茶，保存完好，茶色黝黑光亮，茶氣純正，芳醇厚重，是不可多得的老黑茶珍品。

Liu Bao Tea is a specialty of Guangxi which is available in two forms: loose tea and compressed tea in baskets, both of which can be consumed directly. Since the Qing Dynasty, it has been recognized as a tribute tea due to its distinct betel nut aroma, enjoying popularity both domestically and internationally. Tea merchants from Guangdong and Hong Kong would repack the tea for sale in Hong Kong and Malaysia. Its unique steaming process enhances its rich and mellow flavor, making it popular for both taste and health benefits in Hong Kong, Macau, and Southeast Asia from the 1950s to the 1960s. The dried tea leaves are sorted and steamed in wooden barrels to soften, then spread into round bamboo baskets for natural drying, followed by one to two months of aging.



Lot **139**

數量：原笠一包
總重量：連包裝約 37kg

五十、六十年代
嫩尖正原度 原笠老六堡

A Bag of Liu Bao Tea
Circa 1950s/1960s

估價：HKD 800,000 - 1,200,000

年份：1950/1960 年代
工序：黑茶
茶廠：梧州（香港加工）



參考圖



此拍品為原蓆包裝七十年代北越大葉種青毛茶(111批次)，除了外有原裝蓆包，內有白色編織袋雙重包裹，蓆身印有HG 111及其重量。越南茶分南越茶及北越茶，當以地近雲南省所產的北越茶為佳品。草袋裝上分公、111、222、333，以111批次品質最佳。此拍品採大葉種喬木茶菁所製，條索粗壯，級數約五至九級，陳期與印級茶近似，散茶質地疏松易於陳化，湯水香甜香醇、厚稠；茶韻醇和持久，回甘甜滑潤且耐泡。此茶保存良好，陳期半世紀，頗具收藏價值。七十年代香港市場上雲南青毛茶價高貨少，即有茶商大量購入北越茶，頗受好評。九十年代一批香港老茶樓清理舊倉，加之普洱收藏熱潮興起，香港茶樓舊藏的老散茶又多流入台灣市場，歷年消耗之餘，如此原裝原包，實在不多。越南北部接連中國雲南省，茶樹很早就從雲南原產地順流而下。越南北部與雲南接壤，風土不異，同樣出產優質茶菁，匠師工藝亦出一脈，二十世紀初北越青毛茶輸入香港及內地。清代至民國，雲南普洱茶經茶馬古道運往東南亞地區並遠銷海外，一些茶號如鴻泰昌遂於當地設立分號，抗戰和解放戰爭後，亦有雲南茶商遷至境外經營。越南等地與雲南地理氣候條件接近，尤其邊境接壤地區，與境內知名茶山原料品質不相上下，故邊境茶大體繼承雲南普洱之工藝，但因產區不同，風味品質各有特色。

This lot comes in its original bag marked with batch number "111". This tea is primarily sourced from the border of North Vietnam and is made from Grade 5 to 9 large tea leaves, with aging performance similar to Yin Grade Pu-er. In the 1970s, Yunnan Qing Mao tea was expensive and scarce in Hong Kong, leading tea merchants to purchase large quantities. In late 1990s, as Hong Kong teahouses began clearing out their stock and many of these entered the Taiwanese market, Qing Mao tea became increasingly rare and precious over the years. Northern Vietnam shares similar geographical and climatic conditions with Yunnan, particularly in the border areas, where the quality of raw materials is comparable to that from well-known tea mountains in Yunnan. Consequently, teas from these regions generally inherit the craftsmanship of Yunnan Pu-er but differ in flavor and quality due to their distinct production areas.



原蓆包 北越大葉種青毛茶



好
古董級普洱茶及佳茗專場

Lot **140**

倉數總
儲量重
：：：
自然原連
倉蓆蓆包
：裝裝
：一約
：包3
：裝7
：一k
：包g

七十年代 原蓆包
北越大葉種青毛茶 (111 批次)

A Bag of Loose Leaf Pu-er Tea
Circa 1970s

估價：HKD 680,000 - 1,000,000

年份：1970 年代
工序：生茶



Lot **141**

倉數總
儲量量
：：約
乾倉一罐800g
/自然倉

五十、六十年代 野生棗香
喬木大葉散茶·乾倉 / 自然倉

A Can of Qiaomu Pu-er Tea
Circa 1950s/1960s

估價：HKD 40,000 - 68,000

年份：1950/1960 年代
工序：半生熟

此五十、六十年代野生棗香喬木大葉散茶兩袋共約800克，大約與萬字散茶同期，經半個多世紀的陳化，條索粗壯，色泛紅褐，有沉穩持久的馥鬱陳香，年代久遠，採用野生喬木大葉種鮮葉，經殺青、揉攢、曬乾製成的曬青毛茶。條索肥碩，未經緊壓工藝，葉片鬆散，轉化速度較快。普洱散茶曾是粵港澳地區茶葉市場的主流品種。

This lot has been preserved in a dry or natural warehouse. It is estimated to be from the 1950s or 1960s, similar to loose tea packaged with the character "萬". After aging for over half a century, it exhibits a reddish-brown color and releases a rich and long-lasting mellow aroma. Loose Pu-er tea was once the dominant variety in the tea markets of Guangdong, Hong Kong, and Macau.

五、六十年代

老六堡



仕宏拍賣



Lot **142**

數總
量量
：：淨
一袋重約5kg

五十、六十年代
嫩尖正原度 老六堡

A Bag of Liu Bao Tea
Circa 1950s/1960s

估價：HKD 100,000 - 160,000

年份：1950/1960 年代
工序：黑茶（生茶工藝）
茶廠：梧州（香港加工、出口馬來西亞）

此五十、六十年代嫩尖正原度老六堡，共五公斤，採用嫩尖幼葉以傳統古法工藝制作，產地梧州，香港加工，早年出口至馬來西亞，今回流香港。老六堡嫩尖正原度是由香港茶商精挑茶質許可的原材料，茶色澤黑褐光潤，條索細嫩緊實，經充分陳化，乾茶香氣純正，有檳榔香、藥香及松煙香味。口感乾淨，有濃郁的木蓼香味及藥香、綿細悠長，茶韻明顯及茶氣強勁，體感明顯，別有老茶風韻的黑茶。

This lot was originally exported to Malaysia. Liu Bao tea has a history of over a thousand years using unique steaming process. The dry tea has a pure aroma featuring notes of betel nut, medicinal herbs, and pine smoke. The taste is bold with flavors of wood ginseng, making it a rare find in the market.

六十年代

老白茶



足吾所好 古董級普洱茶及佳茗專場



六十年代 老白茶 乾倉

此六十年代老白茶共約1.5公斤，乾倉保存，採用傳統工藝，兼有一芽三四葉，兼有嫩芽壯芽，毫心多顯，茶芽轉深，近六十年存放得當，以傳統加工工藝，不經炒揉，只有萎凋及乾燥工藝，最大限度保留茶葉固有的成份及營養價值，因未經揉捻，年月陳化，葉片易斷裂，狀如碎葉，陳化後的色澤日趨加深，藥香益增。白茶是福建特種外銷茶類，早於海外市場頗負盛名，暢銷港澳、新馬、西德、荷蘭、法國及瑞士等地。歷史上，白茶產地範圍小產量較低，且品飲消耗殆盡，存世陳年老白茶量少珍罕。

This lot has been well-preserved in dry storage. The blend consists of one bud and three or four leaves, featuring tender buds with abundant downy tips. Traditional processing methods of only withering and drying were used, maximizing its nutritional value. White tea is a specialty from Fujian, well-regarded in overseas markets, particularly in Hong Kong, Macau, Malaysia, West Germany, the Netherlands, France, and Switzerland. Due to the limited production area and low yields, this lot is particularly rare and valuable.

香港仕宏 2024 秋季拍賣會



Lot 143

倉數：總重量
儲量：淨重約
：一罐 1.5kg
乾倉

六十年代 老白茶 · 乾倉

A Can of Old White Tea
Circa 1960s

估價：HKD 120,000 - 180,000

年份：1960年代
工序：白茶

七十年代

老白茶



仕宏拍賣

足吾所好 古早級普洱茶及佳茗專場



Lot 144

倉數	總重量
儲量	淨重約
：一	1
乾倉	2
罐	k
	g

七十年代 老白茶·乾倉

A Can of Old White Tea
Circa 1970s

估價：HKD 40,000 - 68,000

年份：1970 年代
工序：白茶

此七十年代老白茶，建陽古樹貢眉，傳統工藝，不經炒揉，只有萎凋及乾燥工藝，年月陳化，葉片狀如碎葉，色澤日趨加深。建陽縣為白茶生產要地，以貢眉為主，自唐代已有栽制，至宋代成為點茶原料，製作「龍團鳳餅」上貢宮廷。此七十年代老白茶，近五十年存放得當，藥香益增。白茶產量不多，經年品飲消耗殆盡，存世陳年老白茶日益珍貴。

This lot is processed using traditional techniques of withering and drying to maximize its nutritional value. White tea is a unique export from Fujian, Gongmei in particular, was used to create tribute teas during the Song Dynasty. Due to its limited production and high demand, this lot is exceptionally rare.



Lot 145

倉數	總重量
儲量	約
：五片	3 3 3
自然倉	0 1 2
	9 0 1
	g 8 g
	， ，
	3 3
	5 1
	2 9
	8 8
	， ，

七十年代 中茶牌簡體字鐵餅

5 Pieces of Chung Cha Brand Pu-er Tea Cake in
Simplified Chinese Characters
Circa 1970s

估價：HKD 250,000 - 400,000

年份：1970 年代
工序：生茶
茶廠：下關茶廠

此七十年代中茶牌簡體字鐵餅共五片，自然倉保存，原包狀態，保存完整，標準十七字，茶餅扁平堅實，配茶風格與宋體字綠印相近，配茶以單一茶菁為料，陳化後氣韻強勁，梅樟香茶韻。下關出產餅茶數量不多，應為特殊供應內銷指定地區而生，市面流通量少，是勐海七子茶品以外別具特色的陳年茶品。

This lot comes in original packaging and has been preserved in a natural warehouse. Resembling Green Mark printed in Song characters, the packaging features 17 printed characters, tea cakes are flat and solid, and use only a single type of leaf. The tea is rich with plum and camphor aroma. Production from Xiaguan Tea Factory is limited, making it very rare in the market.

八中黃印

Lot **147**

六十年代 八中黃印青餅

8 Pieces of Yellow Mark Pu-er Tea Cake
Circa 1960s

估價：HKD 1,000,000 - 1,800,000

倉儲：自然倉	數量：八片	總重量：約	年份：1960年代
3038	3303168	3098	工序：生茶
3168	331848	31148	茶廠：勐海茶廠
8	8	8	



此六十年代八中黃印，自然倉儲存，部分茶餅邊稍有碎，茶餅內埋八中一茶內飛，硬餅黃芽，膠質明顯，梅樟香夾帶著蘭香。茶面配芽較重，口感豐富，茶氣茶韻足。半世紀陳化，口感層次分明，舌面生津，茶氣強勁，具有特別青樟香/梅樟香。

This lot has been stored in a natural warehouse and comes with an inner ticket. Some pieces show slight breakage on the edges. The blend uses tea leaves with yellow buds, resulting in a rich and flavorful taste, with aromas of plum and orchid.



紅 / 藍鐵餅散塊

此組散塊含印級茶經典品種紅印鐵餅/藍印鐵餅約共650克，自然倉/傳統香港倉保存，雖非完餅，但茶體狀態良好，氣韻十足。紅藍印鐵餅為印級茶中的銘心絕品，散塊則宜飲宜藏，適於品鑒把玩，有碎金片羽之美。紅、藍鐵同樣列為勐海茶廠經典名品，質量用料與香氣如出一轍，具舌面生津之茶氣。紅鐵選用易武大葉種茶菁，加重萌芽配方，條索長而壯碩，背面亦配有條索及芽面，因特殊的金屬模具蒸壓工藝，茶葉膠質豐富。餅型堅實，故陳化時間相對需時，至今經過數十年的時日陳化，整體烏亮潤澤，條索粗壯金黃，倉儲狀態良好，乃原茶餅中精選而出，為古董茶愛好者提供了一個品飲珍稀佳品的上佳機會。

This set has been stored in a natural or traditional Hong Kong warehouse and is in good condition despite the loose parts, weighing a total of 650g. Both Red Mark and Blue Mark are premium Yin Grade Pu-er, known for their top-grade raw materials and rich aroma, making them ideal for drinking and collecting. After decades of aging, they have developed a golden, lustrous appearance, offering antique tea lovers an excellent opportunity to taste rare and fine selections.

Lot **148**

五十年代 紅印 / 藍印鐵餅 · 散塊

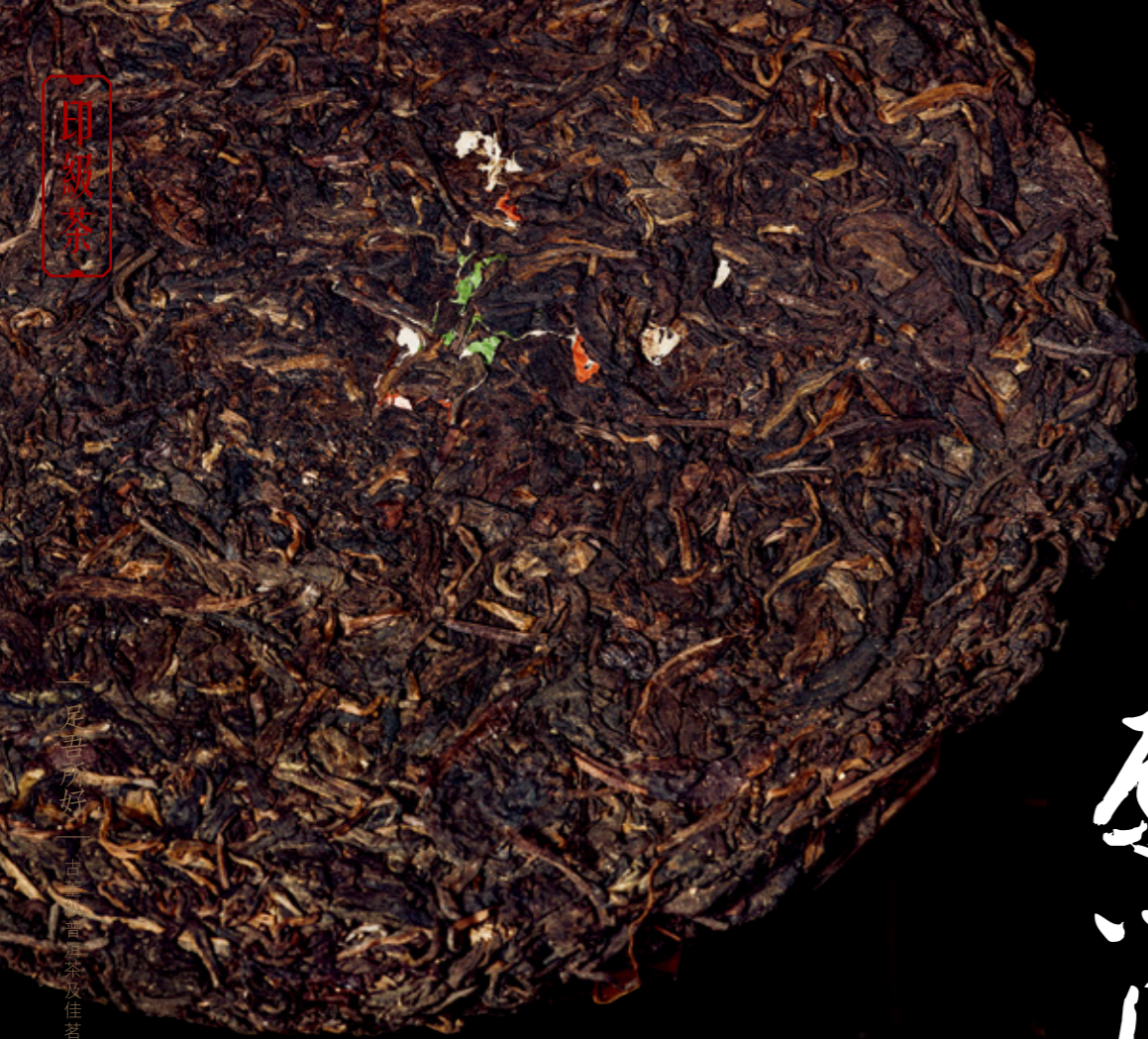
2 Sets of Red Mark/Blue Mark Pu-er Tea
Circa 1950s

估價：HKD 350,000 - 500,000

總重量：約650g
數量：兩盒
倉儲：自然倉 / 傳統香港倉

年份：1950年代
工序：生茶
茶廠：勐海茶廠





原筒無紙紅印



Lot 149

五十年代 原筒 無紙紅印

7 Pieces of Red Mark Pu-er Tea Cake without Wrapping
Circa 1950s

估價：HKD 1,600,000 - 2,800,000

總重量：約 2137g
數量：一筒七片
倉儲：自然倉

年份：1950年代
工序：生茶
茶廠：勐海茶廠

此五十年代無紙紅印，一筒七片，自然倉儲存，餅形完整，茶面油亮，條索粗壯飽滿，選用勐臘野放老樹茶菁，舊式技藝壓模，餅面茶面明顯精工揉製，兼有蘭樟之香中。陳化至今近七十載，茶氣十足，茶韻醇厚。據載，無紙紅印之所以無包裝紙是與香港早年儲存和銷售習慣有關，卸去包裝紙更利陳化、存放和銷售。時至今日，無紙紅印成為號級茶的承接者，印級茶中的瑰寶，在普洱界中無人不曉。市面上越趨稀少，深受藏家追捧。

This lot has been well-preserved in a natural warehouse and is in excellent condition. The tea was carefully selected Yiwu thick leaves with golden buds. Made using traditional pressing, it offers a rich flavor with a camphor fragrance. The absence of packaging paper is due to early storage and sales practices in Hong Kong, which enhanced aging and facilitated storage and sales. This is a rare collectible of the highest quality, making it a perfect item for investment collectors.



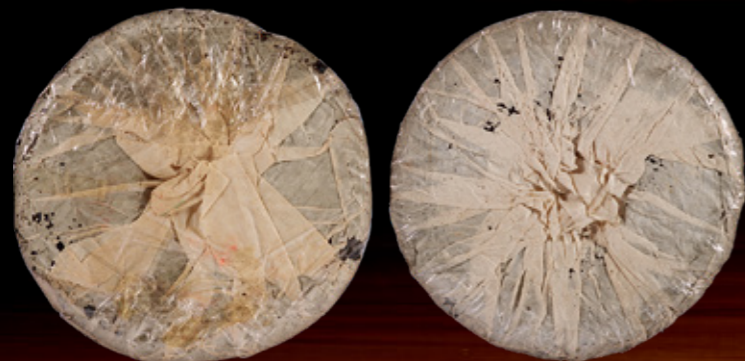
甲乙級藍印

乾倉

足吾所好 古董級普洱茶及佳茗專場

此件拍品乃純乾倉/乾倉的五十年代甲級、乙級藍印青餅各一片，是早期有等級標註版本，茶葉配茶風格萌芽重，陳化日久，茶韻滋味富層次，金黃油亮，粗幼有序，品相甚佳。印有甲乙級字樣的藍印，屬較早期藍印，存世稀少，經歷超過半個世紀的陳化，保存狀態完整，樟香馥鬱高雅，收藏品飲皆宜。甲乙級藍印為勐海茶廠五十年代生產，為新中國成立後，中茶公司早期出品。

This lot features the early version of the Blue Mark, produced after the establishment of People's Republic of China by China Tea Company. The tea cakes are in excellent condition, showcasing a golden, shiny surface and a heavy blend of coarse leaves. After aging in absolutely dry or dry storage for over half a century, the tea has developed a rich camphor aroma, making it suitable for both collection and tasting.



Lot 150

五十年代 甲級、乙級藍印青餅·純乾倉 / 乾倉

2 Pieces of Grade A and B Blue Mark Pu-er Tea Cake
Circa 1950s

估價：HKD 700,000 - 1,200,000

倉儲：純乾倉 / 乾倉
數量：兩片

總重量：約(甲) 326g
(乙) 342g

年份：1950年代
工序：生茶
茶廠：勐海茶廠

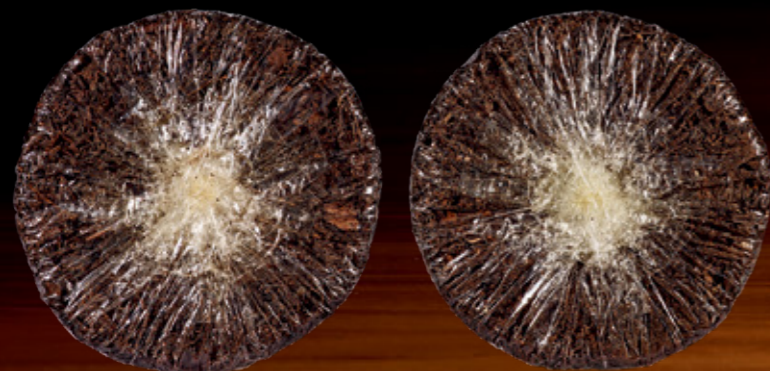
無紙紅印

乾倉

足吾所好 古董級普洱茶及佳茗專場

此五十年代無紙紅印共兩片，以乾倉/自然倉保存，保存狀態上好，其中一片見八中內飛埋於茶餅之內，餅身烏潤油亮，茶菁條索粗壯、芽毫金黃，嚴選勐臘野放老樹茶菁，配以舊式技藝壓模，精工揉製，餅型厚實，茶面油亮茶氣十足。七十年陳化，葉底依舊具活性，富層次，舌底鳴泉，老韻盡現。據載，無紙紅印之所以無包裝紙是與香港早年儲存和銷售習慣有關，卸去包裝紙更有利陳化、存放和銷售。時至今日，無紙紅印成為號級茶的承接者，印級茶中的瑰寶，在普洱界中無人不曉。市面上越趨稀少，深受藏家追捧。

This lot has been well-preserved in a dry or natural warehouse and is in excellent condition. The inner ticket is nestled among carefully selected thick leaves with golden buds. Made using traditional pressing, it offers a rich flavor with a camphor fragrance. The absence of packaging paper is due to early storage and sales practices in Hong Kong, which enhanced aging and facilitated storage and sales. This is a rare collectible of the highest quality, making it a perfect item for investment collectors.



Lot **151**

五十年代 無紙紅印·乾倉 / 自然倉

2 Pieces of Red Mark Pu-er Tea Cake without Wrapping
Circa 1950s

估價：HKD 500,000 - 800,000

倉儲：乾倉 / 自然倉
數量：兩片

總重量：約300g，
306g

年份：1950年代
工序：生茶
茶廠：勐海茶廠

香港仕宏2024秋季拍賣會

早期大字紅印

早期紅印一點紅版配茶格調近乎甲級紅印，採用萌芽較重之配法，以乾倉陳放，風味承襲紅印正統，然其茶性較為剛烈，且茶氣更足韻味豐富。唐慶陽先生：打從范和鈞時期開始，紅色茶字的普洱圓茶，一直都是選用勐臘最好茶菁做的。紅印青餅在當時計劃經濟開始之初的歷史背景下，生產取得了原料使用主導權，精選勐臘最好的茶菁；野放易武正山古樹壯葉為料，嚴謹芽葉配比，配茶風格茶菁級數較高，萌芽比例重，並沿用傳統制茶壓模之法及壓製發酵方法，保證了印級古董茶餅擁有豐富細膩的口感，茶性剛烈飽滿，茶韻強烈。精工揉制，品質具高度穩定性，紅印是高質茶品的代名詞。此次上拍的早期大字紅印青餅，一點紅版，其包裝字版較為特殊，「中國茶業公司雲南省公司」之「中」字右上綴一紅點。當時手工拓版印刷外包裝手工長纖維棉紙，蓋因當時中茶公司包裝皆以木刻版畫方式印刷，木制模具刻畫修整中造成瑕疵，卻也成為茶餅斷代鑒定之依據。此拍品來自一位資深普洱藏家，該茶於藏家購入時部分有開驗過，確保為大字紅印。於較早年進入普洱收藏圈，本拍品從眾多精品中細挑出來，乾倉存放多年，保存狀態良好，其包裝紙幾乎完整無缺，重量亦接近出廠時的狀態，餅形完整，重量十足，約341克。早期紅印一點紅版配茶格調近乎甲級紅印，採用萌芽較重配法，以乾倉陳放，風味沿襲紅印正統，然其茶性較為剛烈，且茶氣更足韻味豐富。歷經一甲子陳期，陳化表現優良，性味平和而深厚蘊藉，茶氣充足，葉底仍具活性，舌底鳴泉，早期紅印之生產年代至今已逾半世紀，存世者無多，早期紅印一點紅版更是一餅難求，極具歷史價值與收藏意義。早期大字紅印青餅，一點紅版曾於2019香港仕宏春拍中，以105萬落槌價破紀錄成交，收藏潛力不容少覷。

As early as 1939, Mr. Fan Hejun was transferred from the China Tea Company to Yunnan, where he pioneered mechanical tea production. Menghai Tea Factory owner Mr. Tang Qingyang stated that since the time of Mr. Fan Hejun, Red Mark Pu-er has always used the best tea leaves from Menghai. With full control over raw material selection, only the finest wild Yiwu tree leaves, with a rigorous bud-to-leaf ratio and a higher grade. It adhered to traditional tea-making methods and fermentation processes, ensuring a rich and delicate flavor, along with a robust and strong tea essence. This lot features a special printing with a red dot in the character "中". The flaw is caused by the carving and adjustment of the wooden molds used during production, which have become a basis for dating the tea cakes. This lot comes from an experienced Pu-er collector and was carefully stored in a dry warehouse in excellent condition. Not only is its packaging complete and intact, but its weight is also close to its original state, weighing approximately 341g. Early Red Mark Pu-er is almost on par with Grade A Red Mark Pu-er. After over sixty years of aging in a dry warehouse, its maturation is excellent, resulting in a mild yet profound flavor. This particular lot is especially hard to come by, making it highly significant in historical and collectible value. A similar item was sold at the 2019 L&H Spring Auction for a record-breaking hammer price of HKD 1.05 million, indicating its remarkable collectible potential.



Lot 152

五十年代 早期大字紅印青餅 一點紅版·乾倉

A Piece of Early Red Mark Pu-er Tea Cake
Circa 1950s

估價：HKD 680,000 - 1,000,000

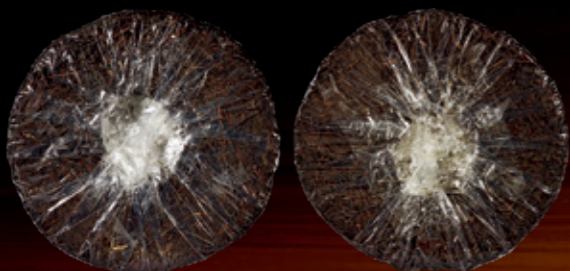
年份：1950年代或更早
工序：生茶
茶廠：佛海茶廠/勐海茶廠
總重量：約341g
數量：一片
倉儲：乾倉



號級茶

此四十年代左右不知名號級茶藍標共兩片，偏乾倉/自然倉保存。茶餅埋有藍標，唯藍標圖案未曾刊於古董茶參考書籍內。此兩片無包裝紙普洱茶，條索粗壯，餅型寬厚不規整，約為四十年代左右所出的號級茶，見茶餅有藍內飛，舊日茶號為私家經營，銷售全賴茶品之質地口碑，故各茶號主人皆各具匠心。

This lot has been preserved in mildly dry or natural storage. These tea cakes have an irregular shape and are made from thick, sturdy tea leaves. While the blue inner ticket has not been referenced, the overall appearance suggests that they are likely Hao Grade Pu-er tea produced by private tea houses in the 1940s. These teas are often of top quality and craftsmanship, as these tea houses rely entirely on their reputation.



Lot 153

四十年代左右 不知名號級茶·藍標

2 Pieces of Hao Grade Pu-er Tea Cake (Blue Ticket)
Circa 1940s

估價：HKD 220,000 - 380,000

總重量：約308g, 317g
數量：兩片
倉儲：偏乾倉/自然倉

年份：1940年代左右
工序：生茶

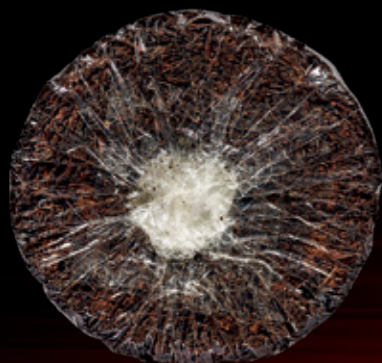
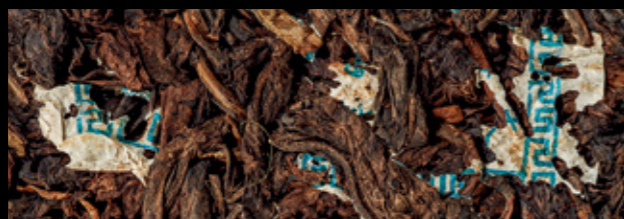


百年同昌號

乾倉

同昌號創於同治七年，起源自易武茶區，為易武大茶莊，因其上佳品質而被列入宮廷貢茶。清末停業，民國十年(1921年)左右，由朱官寶重建，抗日戰爭前夕，轉交黃文興主持經營，規模可觀，年出茶四百擔，與車順號不相上下。黃文興祖籍廣東，香山縣唐家鄉人，因經營茶葉遷居易武，黃氏家族世代習武，黃文興叔父即名動一時的武狀元黃席珍，黃文興亦修習拳法，為頂尖高手，因崇武改名黃備武，與同泰昌朱小武、同興號向繩武同為名震滇南的易武三武之一。此片為近百年同昌號黃文興圓茶，乾倉保存，經九十多年陳期，保存狀態良好。於餅身中可見黃文興普洱早期版本的白底藍色圖字內飛有「黃文興」下款，埋於圓餅之中。茶餅面略有補，精工揉造，條索扁長粗大，可見梗葉一體的茶菁，偏金栗色，白毫粗碩。

This lot is preserved in dry storage under excellent conditions and has substantial weight. Tong Chang Hao closed at the end of the Qing Dynasty and was rebuilt around 1921 by Zhu Guanbao, later being handed over to Huang Wenxing. Under his leadership, the scale of operations grew significantly, producing 400 dan of tea annually, comparable to renowned Che Shun Hao. Due to the exceptional quality, Tong Chang Hao was selected as a tribute tea for the imperial court. The tea cake is thick and round, meticulously crafted with flat, elongated leaves and prominent white tea buds. It also features a blue-on-white inner ticket with an early design by Huang Wenxing.



Lot 154

百年 同昌號黃文興·乾倉

A Piece of Tong Chang Hao Huang Wenxing Pu-er Tea Cake
Circa 1930s

估價：HKD 350,000 - 600,000

倉儲：乾倉
數量：一片
總重量：約340g

年份：1930年代
工序：生茶
茶廠：同昌號茶莊



百年陳雲號

鄧時海先生在《普洱茶》一書中評價：

「陳雲號圓茶外形深栗油亮，湯色呈栗色，有野樟香氣。茶氣強，有老韻，水性厚滑，味微甜，喉韻回甘，舌面生津。」





「陳雲號」是民國初年著名普洱茶號，創號於雲南曼臘茶山張家灣，為當地民國年間首屈一指的大茶號。創始人陳石雲，別號陳半山，當時曼臘茶山半數茶園皆屬陳氏，與易武同慶號齊名，民國初年曾有「易武有個劉葵光，曼臘有個陳半山」一說。鼎盛時期在1900至1933年，為當時最大的普洱茶商之一，且自有騾馬商隊，茶品遠銷至越南、香港等地，佔據了東南亞三分之一的市場，地位無可比擬。陳雲號選料做工皆十分講究，茶葉原料以易武、曼臘茶山為主，非喬木級大樹原料不用，品質之佳與易武同慶號、宋聘號並重。陳雲號圓茶數量極為稀少，與宋聘、同慶、同興、福元昌並列五大古董號級茶之列，深受歡迎。

Chen Yun Hao was a renowned Pu-er tea house established in Manla, owning half of the tea gardens in the mountains. Although production is limited, Chen Yun Hao were classified as the top five antique tea brands along with Song Pin Hao, Tong Qing Hao, Tong Xing Hao, and Fu Yuan Chang Hao. Its popularity reached its peak during 1900 to 1933, contributing to 1/3 of the South Asian markets such as Vietnam and Hong Kong.



內飛特寫圖



筒票特寫圖

筒票文字：「陳雲號 本記在易武山開設茶號，歷年已久逐年加工，揀提細白新春尖梭採取清香味美茶質極佳，貴客光顧請認陳雲號為記 主人啟」

此百年原筒陳雲號白紙黑字大票一筒七片，過百年偏乾倉保存，保存狀態完整，歲月成金，條索粗壯，餅面寬厚，餅面色澤深栗油潤，芽毫勻稱，經過百年陳化，茶湯呈栗紅色，水性醇厚順滑，回甘生津，茶氣強，藥香濃郁，陳韻悠揚。此原筒陳雲號筒票內飛齊全，既有白底黑筒票，也有埋於茶餅的藍內飛，淺湖水綠字，該餅型較緊，偏乾倉儲存，在茶菁選採及搭配上皆有特色，風味各異，又以白紙黑字品格最高。

藍內飛依稀可見其標誌性太陽圖案及「陳雲貴印」字樣。筒票保存完好，筒票印章頂部有四十五度角的切角，與其他清末民初的茶品筒票設計相仿。筒票以手工薄棉紙製作，附蠟質面層，並使用木質印章人工蓋印，亦屬清末民初的典型工藝。茶品內飛筒票墨色字跡多模糊不清，正是清末民初時茶號通用的木刻印刷特征。據此可知此拍品當為晚清至民國初年製品，正是陳雲號風華鼎盛之際。茶餅取易武大葉種喬木茶菁，葉張厚重，條索扁短而緊結，呈深栗色，餅面油亮，經百年陳化，茶氣偏強，味正韻雅，充分體現易武正山茶醇和風味，實為稀見名品。

This lot has been well-preserved in a mildly dry warehouse. The tea showcases a smooth and sweet taste with medicinal fragrance. There are two types of tickets: a blue inner ticket with light green print, and a large black-on-white ticket, which indicates the highest standard in production.

The craftsmanship and technique align with the late Qing and early Republic period, marking the peak of Chen Yun Hao's prominence. The inner ticket features a sun pattern with the words "Chen Yun Gui Yin," while the larger ticket has a 45-degree cut design. The packaging is made of thin cotton paper with a waxy layer and is stamped using wooden seals. Additionally, the tea cakes were printed with woodblocks, resulting in slightly blurred ink and characters. This lot holds significant historical value as a rare and treasured find.

Lot **155**

百年 原筒 陳雲號 (白紙黑字大票)

7 Pieces of Chen Yun Hao Pu-er Tea Cake (Black Ticket)
Circa 1910s

估價：HKD 5,800,000 - 8,000,000

總重量：約 2243g
數量：一筒七片
倉儲：偏乾倉

年份：1910年代
工序：生茶
茶廠：陳雲號茶莊



百年鼎興號

此鼎興號藍標共七片，偏乾倉儲存，其中五片見內飛，餅面顏色亮栗，茶湯清香，水厚微甜，茶葉帶淡淡撲鼻的沉香味。陳期近百年，條索分明，黃芽油光，取小葉喬木種，具野樟香，藍內票完好。鼎興號為上世紀三四十年代勐海知名茶莊專門製作高級茶品，圓茶冠絕一時，又以紅藍內飛為最佳。鼎興號茶莊是三十年代普洱茶號，主要在勐海地區經營，主要生產鼎興圓茶以及鼎興緊茶。勐海地區在清末時就是有名的茶葉產地，雖然名聲比不上易武及倚邦茶區，但製作的普洱茶已經有很好的品質。鼎興號主要就在此經營，製作並銷售高品質普洱茶。老闆馬鼎臣是回族人，信奉伊斯蘭教，因此鼎興茶莊的產品，常以伊斯蘭的「星月」為標記，這也是鼎興號緊茶及圓茶最大特徵。

This lot features a blue inner ticket and has been aged in a mildly dry warehouse for nearly a century, displaying clear strips and a shiny yellow bud. Ding Xing Hao, owned by Ma Dingchen, a member of the Hui ethnic group who practices Islam, is known for incorporating the crescent, an Islamic symbol, on their teas. Among their products, those with red or blue inner tickets are considered the best in the market.



Lot 156

百年 鼎興號·藍標

7 Pieces of Ding Xing Hao Pu-er Tea Cake (Blue Ticket)
Circa 1930s

估價：HKD 600,000 - 1,000,000

倉儲：偏乾倉
數量：七片

358g

347g

356g

348g

356g

348g

337g

337g

總重量：約

茶廠：鼎興號茶莊

工序：生茶

年份：1930年代

百年末代緊茶

乾倉

足吾所好
古董級普洱茶及佳茗專場



Lot 157

百年 末代緊茶 · 乾倉

7 Pieces of Vintage Pu-er Jin Cha
Circa 1930s

估價：HKD 480,000 - 800,000

總重量：約 1440g
數量：原條七粒
倉儲：乾倉

年份：1930年代
工序：生茶

鄧時海先生指出老舊緊茶具有極高的醫藥療效，口感純正，更具有歷史價值，可謂「千載難逢，可遇不可求的好普洱茶」。

此拍品為原包裝末代緊茶共一條七粒，以雲南野生大樹茶菁為料，主要銷往藏區，以糯筍葉包成長條(約長56cm)運輸，每七個首尾相連，乾倉保存，乾倉狀態比較少有，經歷近一世紀仍有此完整包裝，加之停產多年，存量不多，市場少見。緊茶產生於沱茶後，銷往藏區為主，可分勐景緊茶和鼎興緊茶兩種，從1967年開始，雲南茶廠將製作蘑菇型緊茶用的茶菁改用於生產新式長方形磚茶，蘑菇型緊茶就此停產。

This lot was intended for the Tibetan market, pressed with Yunnan wild big leaves and wrapped in glutinous bamboo leaves into a strip of about 56cm for transportation. Since 1967, the mushroom-shaped Jinchā has been changed to rectangular brick tea. The term "last generation of Jinchā" comes from Pu-er tea expert Mr. Deng Shihai, who noted its remarkable medicinal properties and historical value. This lot comes in original packaging and has been well preserved in a dry warehouse, making it exceptionally rare due to discontinued production and limited stock.



Lot 158

倉數：4
總量：33434378
自然倉

五十、六十年代 白報紙宋聘號

4 Pieces of Song Pin Hao Pu-er Tea Cake in White Newspaper
Circa 1950s/1960s

估價：HKD 220,000 - 400,000

年份：1950/1960 年代
工序：生茶
茶廠：泰國宋聘號茶莊

此五十、六十年代宋聘號四片，餅型較厚，條索緊結，茶菁粗壯，芽毫較多，金黃亮麗，內飛清楚可見。宋聘號為民國三大茶號，原料採購講究，制茶工法嚴謹，揉茶工藝高超，以茶梗置底作支撐，餅身較松而穩固，有利陳化。解放戰爭時期，宋聘號茶莊的後人避戰亂而搬遷到泰國及香港，此拍品為早期宋聘號於泰廠出品採雲南茶菁，秉承老號傳統配茶工藝，經六十多年陳化，藥蔘香氣韻十足，口感出色富陳韻。

The tea cakes are thick and tightly pressed, featuring robust tea buds and shiny golden tips, along with clearly visible inner tickets. This lot represents early production from Song Pin Hao's Thai factory, using Yunnan tea leaves and advanced rolling methods that incorporate stems to enhance aging. Aged for over 60 years in a natural warehouse, the tea exhibits a rich medicinal aroma with hints of ginseng.



Lot 159

倉數：1
總量：349g
乾倉

五十、六十年代 福祿貢茶·乾倉

A Piece of Fu Lu Gong Pu-er Tea Cake
Circa 1950s/1960s

估價：HKD 120,000 - 200,000

年份：1950/1960 年代
工序：生茶
茶廠：福祿貢茶莊 (由鴻利公司督制)

此片五十、六十年代福祿貢茶，乾倉保存，餅型完整。福祿貢茶被譽鳳山三傑之一，採雲南鳳慶縣鳳山大葉喬木茶菁，是正統的雲南普洱茶，曾被歸為印級茶。經逾半世紀陳化，福祿貢茶湯醇厚濃齏，舌面生津，具有純正的野樟香，茶氣特強。福祿貢餅，最早是經由泰國銷往香港。福祿貢茶餅特色為茶餅身較為厚重，有白底綠色內飛，上有「鴻利公司督製」。

The tea cake is perfectly round and has been preserved in a dry warehouse. Although exported from Thailand to Hong Kong, Fu Lu Gong is authentic Yunnan Pu-er made from Fengshan tea leaves, which were once classified as Yin Grade Pu-er. The tea features a pure and distinctive camphor fragrance. This lot has a substantial weight and includes a green-on-white inner ticket that states, "Supervised by Hongli Company."

七子小黃印



此七十年代初小黃印青餅共七片，自然倉儲存，邊有小碎，牛皮紙筒包裹，包裝完整，餅型緊實細小，拼配芽條粗壯，餅面條索級數高，以勐海幼葉茶菁壓製，茶面茶芽已醇化為深金黃色，豐富了茶味層次。經半世紀陳化，茶氣剛強，喉韻醇厚，陳香帶藥香，市場存量不多。

The tea cakes are compact and small in size, with minor fragments on the edges. They are made using higher-grade tender leaves from the Menghai tea region. After aging in a natural warehouse, the taste is smooth and strong, with hints of medicinal notes. Due to limited market supply, these tea cakes are an excellent choice for collectors.

Lot **160**

七十年代初 小黃印青餅

7 Pieces of Small Yellow Mark Pu-er Tea Cake
Circa Early 1970s

估價：HKD 700,000 - 1,300,000

總重量：約 222g
數量：一筒七片
倉儲：自然倉

年份：1970年代初
工序：生茶
茶廠：勐海茶廠



昆明鐵餅



此六十年代昆明鐵餅共五片，自然倉/傳統香港倉儲存，底平無窩，餅身緊實。膠質豐富，口感表現強勁，陳化六十餘年，茶韻十足，為昆明茶廠代表作。昆明鐵餅是具有濃厚印級茶系風格的茶品，而當時所有先進的技術及制茶工藝師皆集中於雲南昆明，是印級茶的繼承者，同樣是鐵餅普洱茶的開端。

These tightly pressed tea cakes have been well-preserved in a natural or traditional Hong Kong warehouse. Kunming had the most advanced techniques and tea artisans during its production, making this lot both a successor to Yin Grade Pu-er and the beginning of Iron Pu-er. With more than sixty years of aging, it has developed a full-bodied and mellow flavor, establishing it as a renowned product of Kunming Tea Factory.

Lot **161**

六十年代 昆明鐵餅

5 Pieces of Kunming Pu-er Tea Cake
Circa 1960s

估價：HKD 300,000 - 500,000

倉儲：	數量：	總重量：	年份：
自然倉/傳統香港倉	五片	約 331.8g	1960年代
		331.8g	工序：生茶
		311.8g	茶廠：昆明茶廠





Lot 162

倉數	總重量
儲量	約
：兩片	3 3
：自然倉	4 4
	7 5
	8 8

七十年代 大藍印圓茶

2 Pieces of Big Blue Mark Pu-er Tea Cake
Circa 1970s

估價：HKD 80,000 - 150,000

年份：1970 年代
工序：熟蒸發酵（七分青）
茶廠：勐海茶廠

此七十年代大藍印圓茶共兩片，自然倉保存，標準七十年代茶品包裝特色：大口中版，餅身較厚大。大藍印採取粗芽大葉，7682配方，是勐海茶廠最後一批用古董茶為原料的茶品，也是最早期採用具實驗性質發酵技術。陳韻樟香兼帶甜香藥香，有印級風味。近半世紀陳化，樟香藥香交錯，陳韻與日俱增，大葉茶菁後續陳化潛力可期。

This lot has been preserved in natural storage and features a thicker body along with a special "中" character on the packaging. Using the 7682 formula, it represents the last batch produced by the Menghai Tea Factory with antique tea leaves and was one of the first to employ experimental fermentation techniques. The tea cakes exhibit notes of camphor and medicinal aromas, suggesting potential for further aging transformation.



Lot 163

倉數	總重量
儲量	約
：一筒七片	2 3 5 1 g
：偏乾倉 / 自然倉	

七十年代 7452 熟茶王

7 Pieces of 7452 Ripe Pu-er Tea Cake
Circa 1970s

估價：HKD 180,000 - 250,000

年份：1970 年代
工序：熟茶
茶廠：勐海茶廠

此筒7452熟茶王共七片，偏乾倉/自然倉倉儲，標準七十年代包裝風格，原包狀態，保存完好，僅最後一片有裂。配茶萌芽重，茶菁較7572更為細緻，有「熟茶王」美譽。根據雲南省茶葉進出口公司志，7452屬於八十年代以前少數可考的茶號。其口感與香氣特殊，是別具特色的勐海熟茶，帶陳年老茶風韻。

This lot has been stored in a mild dry or natural environment and features the standard packaging style from the 1970s, remaining in its original and complete condition. Produced by Menghai Tea Factory in the 1970s, the 7452 has been hailed as the "King of Ripe Pu-er Tea". The 7452 is characterized by a more refined blend compared to the 7572. Although 7452 is a wet-piled tea, its flavor and aroma are unique, reflecting the nuances of aged tea.

雪印青餅



此八十年代初雪印青餅一筒七片，偏乾倉/自然倉儲存，牛皮紙筒包裹，保存狀態良好，帶短內票，勐海茶廠八十年代末採用7532經典配方製作，為勐海茶廠出品採細嫩細青，餅身較小，外包裝紙用小口中厚棉紙，茶字為粉綠色手工蓋印。經四十多年陳化，茶氣剛強層次飽滿，備受茶人青睞。

This lot has been stored in a mildly dry or natural warehouse. It features a short inner ticket, thick cotton paper. Following the 7532 formula, these smaller tea cakes are made exclusively from tender young leaves, making them some of the most delicate teas from Menghai Tea Factory. Their elegant taste and rich layers have made them highly desirable among tea enthusiasts.

Lot **164**

八十年代初 雪印青餅

7 Pieces of Snow Mark Pu-er Tea Cake
Circa Early 1980s

估價：HKD 400,000 - 600,000

倉儲：偏乾倉/自然倉
數量：一筒七片
總重量：約2317g

年份：1980年代初
工序：生茶
茶廠：勐海茶廠



乾倉八八青



此八十年代末88青餅一筒七片，乾倉保存。勐海茶廠傳奇青餅，茶氣充足經久耐泡，以7542配方生產，獨特的陳香是它主要的特點。88青餅以肥壯茶菁為裡，茶韻變化無窮，同時不失普洱的天然真味。經過三十多年的陳化轉變，茶餅烏黑油亮，湯色紅濃透澈，香氣純正持久，因此深受收藏家的追捧。

This lot has been preserved in a dry warehouse. Produced in the late 1980s using the 7542 formula, this special batch is characterized by its unique aged aroma. The brewed tea boasts a strong flavor and a wild fragrance of plum and camphor, even after multiple infusions, making it highly sought after by collectors.

Lot **165**

八十年代末 88 青餅 · 乾倉

7 Pieces of 88 Pu-er Tea Cake
Circa Late 1980s

估價：HKD 500,000 - 880,000

倉儲：乾倉
數量：一筒七片
總重量：約 2559 g

年份：1980年代末
工序：生茶
茶廠：勐海茶廠





Lot 166

倉數	總重量
儲量	約
乾倉 / 自然倉	22,255g
廿一片	22,983g

八十年代
薄紙 8592 圓茶 · 乾倉 / 自然倉

21 Pieces of 8592 Pu-er Tea in Thin Wrapping
Circa 1980s

估價：HKD 100,000 - 180,000

年份：1980 年代
工序：熟茶
茶廠：勐海茶廠

八十年代薄紙八五九二共二十一，採用九級粗茶原料，勐海茶廠渥堆發酵而成的早期熟餅，勐海茶廠八十年代生產的薄紙8592圓茶。最初是香港南天貿易公司向進出口公司訂製茶品，茶韻甘醇，乾倉/自然倉。

This lot has been preserved in a dry or natural warehouse. It was initially custom-ordered by Nantian Trading Company in Hong Kong, using grade 9 coarse tea leaves, and comes with big and small inner tickets. This early ripe tea is fermented using the wet piling method and has a sweet, smooth flavor.



Lot 167

倉數	總重量
儲量	約
自然倉	7片 2417g

八十年代 7572 圓茶

7 Pieces of 7572 Pu-er Tea Cake
Circa 1980s

估價：HKD 40,000 - 70,000

年份：1980 年代
工序：熟茶
茶廠：勐海茶廠

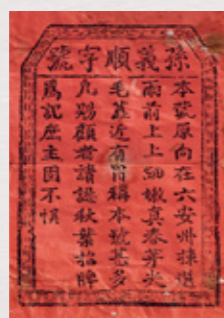
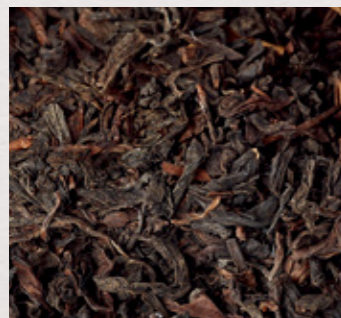
此八十年代7572圓茶，自然倉儲存，薄棉紙外包裝，採用七級茶菁拼配，金毫細芽撒面，青壯茶菁為心茶，發酵適中，滋味醇厚，7572早於七十年代中期推出市場，是勐海茶廠渥堆七子餅系列中長期持續生產的茶品，可見當時市場需求度高，優良茶菁，傳統渥堆技術，加上渥堆的水質特別，制作獨特口感。茶餅陳香，口感醇厚，回甘生津，韻味十足。

This lot has been naturally stored and is wrapped in thin cotton paper. It is made from a blend of grade 7 tea leaves, with golden tips sprinkled on the surface and young robust tea leaves at its core. 7572 was launched in the mid-1970s and has been a long term staple in the Menghai Tea Factory's wet-pile tea series. The tea cakes offer a distinctive taste with a long-lasting sweetness, texture is smooth without any off-flavors.

民國三票孫義順 老六安



Lot 168



倉數	總重量
儲量	約
：三粒	4 5 4
偏乾倉	1 0 9
	9 3 4
	g g g
	， ，

民國 三票孫義順老六安

3 Pieces of Sun Yi Shun Liu An Tea (3 Tickets)
Republic of China

估價：HKD 120,000 - 200,000

年份：民國
工序：黑茶
茶廠：安徽祁門

本拍品為民國三票孫義順老六安，保存狀態仍良好，採用徽菁，條索黑亮。此竹籃外形是典型民初幼身竹枝手工製法，寬扁編織有序。老六安茶均附內票，為油光紙質的說明書。

This lot is well-preserved in a mildly dry warehouse. The bamboo basket features a typical early Republic-era handcrafted design, with a wide, flat, and orderly woven structure. Each basket contains three inner tickets made of glossy paper.



百年汪立春字號老六安

足吾所好 古董級普洱茶及佳茗專場

清代六安茶依然是皇家貢茶，至民國聲勢不減，人稱「安茶」，價格尚在普洱之上。此拍品為百年陳期的老六安茶，標明「新安汪立春字號.....兩前上上銀針。」晚清至民國年間的六安茶牌號喜用春、順字樣，民間有「三順四春」的說法，又因汪氏為六安大姓，也多見「汪」字頭商標，如民國二十二年(1933年)的六安茶業報告中，有汪鴻順、汪賽春、汪永順、汪志春等茶號，皆為汪氏族人經營，「汪立春」應亦為六安汪氏所創辦的茶號，但因社會動蕩，六安早期茶業檔案資料大多佚失，不能詳考其出處。此茶品歷經一世紀風霜而不為蟲蛀微侵所壞，保存良好，風味愈出，可謂珍物。

Liu An was a tribute tea during the Qing Dynasty, and has maintained its popularity as "An Tea" through the Republican era. Known for its medicinal properties, it is revered as "holy tea", and was a more premier tea than Pu-er. This lot comes in its original bamboo basket and wrapped in palm leaves. It bears the signature of Wang Lichun and is labeled as "Processed with the finest tender buds sourced exclusively from Liu An". This tea has withstood the test of time for a century and is well-preserved, it is considered a highly precious collectible.



香港仕宏 2024 秋季拍賣會

Lot 169

百年 汪立春字號老六安

6 Pieces of Wang Li Chun Liu An Tea
Circa 1920s

估價：HKD 500,000 - 800,000

年份：約 1920 年代
工序：黑茶
茶廠：安徽祁門

總重量：
連包裝約 2699g
數量：
一條六粒



Lot 170

數量：約 424g, 454g

六十年代 龍福記瑞春源茶莊 三票孫義順老六安

2 Pieces of Loong Fok Kee Sun Yishun Liu An Tea (3 Tickets) Circa 1960s

估價：HKD 20,000 - 36,000

年份：1960年代
工序：黑茶
茶廠：龍福記瑞春源茶莊

此三票孫義順六安茶，為香港龍福記瑞春源茶莊包裝，一組兩篋，每粒以竹篋包裝，印有香港總代理龍福記瑞春源茶莊等字樣，龍福記瑞春源茶莊為六安茶香港總代理，六十年代時出口遠銷北美，此兩篋三票六安保存完好。茶質陳而不黴，色澤黑亮，香氣陳醇，滋味甘醇爽口及耐泡。

This set includes two baskets, with each piece wrapped in bamboo and containing three inner tickets from Loong Fok Kee Sui Chuen Yuan Tea House in Hong Kong, the general agent for Liu An tea in the region and an exporter to North America in the 1960s. The brewed tea is mellow and non-musty, with a rich aroma even after multiple infusions.



原箱參考圖

Lot 171

數量：約 2kg, 五包

七十年代 香港德信行訂制 香六安

5 Bags of Liu An Tea Circa 1970s

估價：HKD 20,000 - 28,000

年份：1970年代
工序：黑茶
茶廠：中國土產畜產進出口公司

此七十年代香港頭盤商德信行向中國土產畜產進出口公司訂制8201香六安五包共約兩公斤，包木箱邊的是整條鐵片顯示為七十年代或更早期，由於七十、八十年代香港流行六安茶，茶樓多有銷售，茶莊配方各異，風味多樣，頗受青睞。

This set was custom-ordered by the Hong Kong wholesaler Dexin Hang in the 1970s, totaling approximately 2kg. The wooden box is reinforced with a solid iron strip, suggesting it dates back to the 1970s or earlier. During the 1970s and 1980s, Liu An Tea gained popularity in Hong Kong, resulting in a diverse range of flavors that were well-received by consumers.



足善所好 — 古董級普洱茶及佳茗專場

Lot **172**

數量：五包
總重量：淨重約 1 kg

八十年代 老白茶 白牡丹

5 Bags of Old White Tea
Circa 1980s

估價：HKD 18,000 - 28,000

年份：1980 年代
工序：白茶
茶廠：福建福鼎

此八十年代老白茶白牡丹共約一公斤。此茶乃出品人十多年前於多倫多老字號—陸羽茶莊購入。白牡丹屬白茶中較高等級別的茶，於同治十三年(1874年)創製於建陽水吉，經過四十多年陳化，葉片顏色逐漸加深，香氣醇厚，是不可多得的老白茶珍品。

This lot weighs approximately 1kg and was purchased over a decade ago from the renowned Lu Yu Tea House in Toronto, which reliably sources its tea from Hong Kong. White Peony tea is a high-grade white tea that originated in 1874 from Jianyang, known for its refreshing, sweet flavor and prominent aroma. After more than 40 years of aging, this tea has deepened in color and developed a rich fragrance, making it a rare gem among old white teas.



原箱參考圖

· 香港仕宏 2024 秋季拍賣會 ·

Lot **173**

數量：兩罐
總重量：淨重約 4 kg

九十年代 老白茶 高級白牡丹

2 Cans of White Peony Old White Tea
Circa 1990s

估價：HKD 88,000 - 120,000

年份：1990 年代
工序：白茶
茶廠：福建政和

此九十年代老白茶·高級白牡丹共約4公斤，採一芽一葉、二葉所製，屬白茶中較高等級。高級白牡丹選料嚴謹，九十年代白牡丹芽葉比例較二千年為高，陳化三十多年後，香氣醇厚，毫香較豐富。茶葉肥嫩，葉背佈茸毛，葉底柔軟，芽葉連枝。泡後湯色淺橙紅透亮，湯感飽滿潤滑，回甘持久。

White Peony tea gets its name from the brewed tea, which creates the visual of blossoming buds. This lot has been stored for more than 30 years and is considered a high-grade variety within the category of white teas. The brewed tea exhibits a light orange-red color with a glossy texture and a lingering sweet aftertaste.



約14.5x10x2.5cm

約14.5x10x2.8cm

73寬版磚，一組八塊，採用雲南大葉種曬青毛茶，3至7級茶菁，油光紙包裝，保存狀態良好，文革磚經典特徵，尺寸每片約為14.5x10x2.8cm及14.5x10x2.5cm，其中四片為米色臘紙底部有綠間白字香港義安茶外包紙。73磚因壓制混有紅茶末，茶磚背面有明顯乳釘布紋。至今四十多年陳化，陳化表現出色獨有培養的蔘香味，其香氣由蔘香轉成沉香，茶湯深栗，口感柔滑，純正傳統陳茶味，品飲佳品。

This lot is made with sun-dried Yunnan large leaves, graded 3 to 7, and packaged in glossy paper, showcasing the characteristics of Cultural Revolution bricks. Each brick measures approximately 14.5x10x2.8cm and 14.5x10x2.5cm, with four pieces featuring white-on-green text that reads "Hong Kong Yi An Tea Factory". The use of black tea powder gives the back of the bricks a distinct linen texture. After over 40 years of aging, the aroma has shifted from ginseng notes to a rich, deep fragrance.

Lot **174**

七十年代 73 寬版磚

8 Pieces of Wide 73 Pu-er Tea Brick
Circa 1970s

估價：HKD 150,000 - 280,000

數量： 八塊	總重量： 約 952g	年份：1970年代



約13.8x8.7x1.9cm

Lot 175

數量：約 19378

七十年代 7562 青磚

8 Pieces of 7562 Pu-er Tea Brick
Circa 1970s

估價：HKD 150,000 - 280,000

年份：1970 年代
工序：三分熟
茶廠：勐海茶廠

此7562勐海磚茶一組八塊，採用下關臨滄大葉種灌木茶菁，於勐海茶廠壓制，後蓋7562字樣，為文革磚的延續。茶菁以二級幼嫩茶菁為料，摻拼碩壯茶芽，芽頭鋪面，茶面金黃，餅型堅實，背面有布壓痕迹。歷五十多年陳化口感飽滿，7562產量不多，加上茶菁經特別挑選，市場評價頗高。

This lot is a legacy of Cultural Revolution bricks, made with grade 2 tender tea buds mixed with robust leaves, featuring visible impressions from the pressing cloth. After over 50 years of aging, the taste is slightly sweet, and the liquor is smooth and rich. Due to special selection of raw materials and limited production, it is highly regarded in the market.



約15x10x3cm

Lot 176

數量：約 9688

七十年代 79 景谷厚磚

4 Pieces of Jing Gu 79 Thick Pu-er Tea Brick
Circa 1970s

估價：HKD 50,000 - 80,000

年份：1970 年代
工序：熟茶
茶廠：景谷茶廠

七十年代79景谷厚磚四塊，比一般稍厚，經較重發酵過程。79景谷厚磚為七十年代景谷茶廠最後一批茶品，因壓制混有紅茶末，形成特殊甜口風格，茶磚背面有明顯乳釘布紋。四十多年的陳化，香氣由蔘香轉沉香，口感水甜厚實、喉韻柔順、茶氣綿柔、品飲收藏佳品。

This lot is the final batch of tea bricks from the Jinggu Tea Factory. The bricks are slightly thicker due to a heavier fermentation process and offer a unique sweet flavor from black tea powder. After over 40 years of aging, the tea has transformed from ginseng fragrance to agarwood, featuring a thick texture and a rich medicinal aroma, making it an excellent choice for both drinking and collection.

九二方磚



茶磚邊緣起邊凸出，棱角分明。八中茶這一面，四個角落各有一顆茶釘，呈小圓圈狀，中間有一橫杠，是當年茶廠壓制茶磚時，模具乳釘痕跡。

The edges of the tea bricks are slightly raised with distinct corners, each marked by a small tea nail from the pressing mold.

此八十年代末92方磚·早期孔雀之鄉磚，乾倉/自然倉存儲，是八十年代末勐海茶廠推出的100克普洱方磚產品，因包裝盒背後印有孔雀之鄉圖案而得名，又稱「孔雀磚」。勐海茶廠推出了選用高等級原料、規格較小，僅100克的小型青磚。側面印著「淨重100公分」錯版字樣，背面三方字中的「經久耐泡」的「經」字下部份，「工」錯版印成了「土」。底部註明勐海茶廠出品。條索緊實勻齊，磚面撒以細嫩芽頭，茶芽肥壯，金芽明顯，磚面烏潤油亮，屬高檔產品。此92方磚屬孔雀磚早期產品，選料精細，陳化後韻味十足，品質上佳。

This lot is the early "Peacock Brick" version from the late 1980s, featuring 100g square tea bricks with peacock graphics on the packaging. One side incorrectly states "Net Weight 100 cm", while the back shows an incorrect "經" character, and the bottom indicates it was produced by Menghai Tea Factory. In the late 1980s, Menghai Tea Factory began pressing smaller tea bricks using higher-grade leaves with fine tender buds on top. Compared to the 1992 square tea bricks, these 1980s bricks have a thicker texture and more pronounced flavor.

Lot **177**

八十年代末 92 方磚 (早期孔雀之鄉) · 乾倉 / 自然倉

20 Pieces of 92 Pu-er Tea Brick
Circa Late 1980s

估價：HKD 150,000 - 280,000

倉儲：乾倉 / 自然倉
數量：二十塊
總重量：約 1954g

年份：1980年代末
工序：生茶
茶廠：勐海茶廠



生产日期批号 93年10月
 保质期 长期保存
 厂址 勐海县城新茶路一号
 电话 22125 22172
 电挂 5420



參考圖

Lot 178

倉數	總重量
備量	約
：自然倉	：
：六筒(共42片)	：
2	2
3	3
8	3
0	5
5	7
g	g
g	g
2	2
2	3
7	8
6	4
3	4
g	g
g	g
g	g

93小票(水藍印)青餅

42 Pieces of Water Blue Mark Pu-er Tea Cake (Small Ticket) 1996

估價：HKD 300,000 - 500,000

年份：1996年
 工序：生茶
 茶廠：勐海茶廠

此93小票(水藍印)青餅，六筒四十二片，自然倉儲，勐海茶廠以1993年的茶菁，於1996年壓製，棉紙正面包裝的八中字，以平蓋印特殊藍綠色為記，每片茶品內皆附一張批號的小票，紙張上印93年10月的生產日期，故稱93小票。歷經三十年的陳化，茶氣飽滿，舌面生津，野樟香富有特殊梅子韻味，茶品為九零年代市場流通，甚少之佳茗，為88青餅的接班茶。

This lot comes in special blue-green "茶" character and has been preserved in a natural warehouse. Each tea cake includes a small ticket, printed with batch number and production date. Although pressed in 1996, these tea cakes use raw leaves from 1993. The tea exhibits a unique wild camphor aroma with distinctive plum notes. This lot is a rare tea that serves as a successor to 88 Pu-er.



Lot 179

倉數	總重量
備量	約
：偏乾倉/自然倉	：
：一筒七片	：
2	2
6	6
9	9
5	5
g	g

96橙中橙青餅(7532 配方)

7 Pieces of Orange Mark 7532 Pu-er Tea Cake 1996

估價：HKD 60,000 - 100,000

年份：1996年
 工序：生茶
 茶廠：勐海茶廠

此96橙印青餅(又名96橙中橙)一筒七片，偏乾倉/自然倉保存，7532配方，外包八中茶字為手工蓋橙印，原包狀態，保存完整，餅頭較大。96橙印是南天貿易公司向勐海茶廠訂製的最後代表茶。採用1993年及1994年細嫩茶菁製成，單餅規格400克重，餅型較寬大而扁平。茶餅表面金芽特重，多年陳化，飽滿醇厚，可存可飲，其潛力被看高一線。

This lot comes in its original packaging and has been preserved in a mildly dry or natural warehouse. Made from the 7532 formula of Menghai Tea Factory, it represents the last custom order by Nantian Trading Company before they retired. Each cake weighs 400g and has a large flat body. It develops a smooth and rich flavor, making it highly valued for both tasting and collection.



Lot 180

倉數	總重量
儲量	約
：九片	2 3 3
：自然倉	8 1 2
：傳統香港倉	4 9 4
	g , g ,
	3 3 3
	0 4 5
	0 0 0
	g 8 8
	, , ,
	3 3 3
	0 2 2
	9 4 2
	g 8 8
	, , ,

八十、九十年代 下關繁體字 8653 鐵餅

9 Pieces of Xia Guan 8653 Pu-er Tea Cake
Circa 1980s/1990s

估價：HKD 70,000 - 120,000

年份：1980/1990 年代
工序：生茶
茶廠：下關茶廠

此下關繁體字8653鐵餅共九片，薄絲紋紙包裹，餅身較小，其中一片底背面缺，部分非原包。茶面見出油及茶有布壓紋痕跡，茶菁面裡茶差異明顯，以五級茶菁為原料，拼配臨滄南部茶菁，與中茶簡體字口感相若。8653為1986年訂制出口日本，後改為香港出售。經三十餘年陳化下，陳茶轉化表現出色，茶湯醇厚，層次豐富，別具老茶香氣，未來潛力可期。

This lot has been preserved in a natural or traditional Hong Kong warehouse. It is wrapped in thin patterned paper, although some pieces are not in their original wrapping. The 8653 tea was initially produced as an export order for Japan in 1986 and was later sold in Hong Kong. Made with grade 5 tea leaves, this lot offers a distinctive refreshing taste with a camphor aroma.



Lot 181

倉數	總重量
儲量	約
：七片	2 2 1 2
：傳統香港倉	g

92 青餅 (無飛版)

7 Pieces of Pu-er Tea Cake
1992

估價：HKD 100,000 - 180,000

年份：1992 年
工序：生茶
茶廠：勐海茶廠

此92青餅(無飛版)共七片，薄紙包裝，大部分保存完好，其中兩片紙張稍有破損，但可見其餅面油亮，條索分明，7542條索顯得幼結，茶芽比例尤重，傳統香港倉儲存，92無飛茲因當年出口台灣，需去掉內飛內票，而92無飛實同屬88青同期出產的勐海茶廠7542青餅，經三十多年陳化，茶氣陳韻俱佳，可飲可藏。

This lot has been stored in a traditional Hong Kong warehouse. Most pieces are well preserved, though two show slight paper damage that reveals glossy tender leaves. The inner tickets were removed when exported to Taiwan, but they are from the same production period as 7542 was produced by Menghai Tea Factory in 1988. The tea has a delightful aroma and flavor, making it great for tasting or collection.



Lot 182

倉數總
儲量重
：：：約
乾倉一筒
／偏乾倉七片
23322g

八十年代 薄紙 8582 青餅 · 乾倉 / 偏乾倉

7 Pieces of 8582 Pu-er Tea Cake in Thin Wrapping Circa 1980s

估價：HKD 450,000 - 700,000

年份：1980 年代
工序：生茶
茶廠：勐海茶廠

此八十年代薄紙8582青餅一筒共七片，乾倉/偏乾倉存儲，大餅頭，薄竹殼，薄棉紙，餅身厚實，以五至八級粗壯茶芽拼配，以七八級為主。陳化數十年後，滋味純正、回甘強烈。8582青餅是香港南天貿易公司於1985年起向勐海茶廠訂製茶品，其所用茶菁等級略優，口感韻味，表現穩定，是八十年代七子餅經典。近四十年陳期，茶氣十足，樟香味強，可媲美印級茶。

These tea cakes have been preserved in dry or mildly dry storage. 8582 was a custom order by Hong Kong Nantian Trading Company with Menghai Tea Factory in 1985, using grade 5 to 8 coarse leaves, primarily grade 7 to 8. The tea is strong with a pronounced camphor aroma, comparable to that of Yin Grade Pu-er, making it an excellent choice for mid-term teas.



Lot 183

倉數總
儲量重
：：：約
傳統十八片
香港倉 1307g, 2256g,

94 業字青餅 (8582 配方)

18 Pieces of 8582 Pu-er Tea Cake 1994

估價：HKD 150,000 - 280,000

年份：1994 年
工序：生茶
茶廠：勐海茶廠

此94業字青餅(8582配方)共十八片，勐海茶廠出品，薄棉紙包裝上印錯版業字，也是細字平出內飛中最後一批。經過香港茶倉保存，餅身扎實，餅面金毫顯露，湯色栗紅透亮，有特殊的蔘香味，湯質濃郁、膠感厚實、滑順溫潤、口感與八十年代8592圓茶接近，乃勐海茶廠九十年代佳作。

The packaging features a misprinted "業" character and a fine print inner ticket from the last batch. The brewed tea reveals a unique medicinal aroma, similar to the taste of 8592, and displays aging characteristics comparable to 88 Pu-er, making it a notable tea from the Menghai Tea Factory in the 1990s.

九七水藍印

乾倉

此97水藍印青餅，兩筒共十四片，乾倉儲存，保存完好，有別於常規的7542水藍印，這批為8582配方青餅，餅頭較大，餅身較厚，以透光性及韌性較低的薄棉紙作原包裝。整筒竹箬包裹，約重2296克及2214克，是市場較少見的357克重版本。97水藍印是最後一批以勐海茶廠內飛出品的常規茶，別具劃時代的歷史意義。經過近三十年陳放，陳香正而濃烈，茶性豐富，葉底油光，栗紅泛青，軟柔有彈性，入口細滑，可飲可藏，待適時轉化後，茶氣茶韻將更進一步。

This lot has been preserved in dry storage under excellent conditions. Unlike the regular 7542 Water Blue Mark, this batch is made from the 8582 formula, featuring a larger tea cake with a thicker body, wrapped in thin cotton paper and contained in complete bamboo tubes. The two tubes weigh 2296g and 2214g respectively, resulting in a rare weight of 357g per tea cake. This particular lot is the last batch made with the Menghai Tea Factory printed inner ticket, carrying significant historical importance. The brewed tea exhibits a rich and intense aroma and taste, making it suitable for immediate consumption as well as for further aging.



Lot **184**

97 水藍印青餅 (8582 配方) · 乾倉

14 Pieces of Water Blue Mark 8582 Pu-er Tea Cake
1997

估價：HKD 380,000 - 680,000

年份：1997年	總重量：約2296g
工序：生茶	數量：兩筒(共14片)
茶廠：勐海茶廠	倉儲：乾倉
	2214g

九七老樹圓茶

乾倉



此97老樹圓茶(最早班章概念茶)，共一筒七片，乾倉儲存，具有班章概念較早期的特殊茶品，壓有紅絲帶，內飛寫有「喬木老樹」，為高級訂製茶品。香港茶廠向勐海茶廠訂制出口台灣的首批以產地為主題，取班章大樹純料而制，有別於其他的嘜號以各地毛料拼配而成，總出廠量只有數十大件，經廿多年陳化，茶韻豐富，備受市場推崇。

This lot has been stored in a dry warehouse and comes with inner tickets and red ribbons. Ordered by Hong Kong tea merchants for export to Taiwan and made exclusively from Banzhang tree leaves, this tea distinguishes itself from other brands that blend materials from different regions. Due to its rarity and esteemed qualities, it is highly regarded in the market.

Lot **185**

97 老樹圓茶 (最早班章概念茶) · 乾倉

7 Pieces of Early Ban Zhang Pu-er Tea Cake
1997

估價：HKD 200,000 - 320,000

總重量：約 2642g
數量：一筒七片
倉儲：乾倉

年份：1997年
工序：生茶
茶廠：勐海茶廠



九六紫大益



此96紫大益青餅，兩筒共十四片，乾倉/自然倉儲存，勐海茶廠大益青餅。1996年紫大益市場上其有601及602批次。當年因為未被台灣人收購，長年儲存於香港倉庫內，輾轉間由港茶商購入，只有極少數流通於市場上。原料配方於傳統7542配方下再加以改良，口感帶有自然煙燻味。外包裝以全紫色印刷，斷南及「XISHUAN」西雙拼音，部分茶餅稍有水跡及紙張略不完整，但見茶葉條索較完好，經逾廿載陳期，茶湯透亮，香氣淡雅，口感稠密，陳韻味濃，實屬品飲佳品。

This lot has been preserved in dry or natural conditions. The 601 and 602 batches of Purple Dayi Pu-er were initially intended for export to Taiwan but were later acquired by Hong Kong merchants and stored there, resulting in very few being available on the market. The formula is based on the 7542 but has an enhanced natural smoky flavor. The outer packaging is entirely purple and features the "斷南" characters and "XISHUAN" pinyin, though some packages show slight water marks and are incomplete. The brewed tea is rich, with a delicate aroma and dense texture, making it an excellent choice for drinking.

Lot **186**

96 紫大益青餅 · 乾倉 / 自然倉

14 Pieces of Purple Dayi Pu-er Tea Cake
1996

估價：HKD 380,000 - 600,000

年份：	1996年
工序：	生茶
茶廠：	大益茶廠
總重量：	約 2375g
數量：	2414g
倉儲：	乾倉 / 自然倉 (共14片)





Lot **187**

倉數總
儲量重
：：量
：：：
傳一約
統筒二
香七二
港片二
倉 0
g

八十年代末 89 青餅

7 Pieces of 89 Pu-er Tea Cake
Circa Late 1980s

估價：HKD 200,000 - 380,000

年份：1980 年代末
工序：生茶
茶廠：勐海茶廠

1989年勐海茶廠出品的7542青餅，又名89青，一筒七片，傳統香港倉儲。來源於勐海純正野放大葉種，以經典生茶7542配方製作，以四級幼嫩茶菁壓製，大餅頭，條索稍有灰白，餅邊較薄及扁平，入口層次複雜，香氣持續轉化。此批青餅竹筴完整，八中一茶標誌使用青綠色印刷，薄綿紙包裝。

This lot has been preserved in a traditional Hong Kong warehouse and is in good condition. The tea cakes are wrapped in thin paper with apple green "茶" character and stored in a complete bamboo tube. Following the classic 7542 formula, they are pressed with grade 4 tender leaves and have a slightly grayish-white surface. The tea cakes feature a large body with a thin, flat edge. The taste is complex, with aromas that continuously transform.



Lot **188**

倉數總
儲量重
：：量
：：：
傳一約
統筒三
香加零
港一零
倉 片零
g

八十年代 薄紙 8582 青餅

8 Pieces of 8582 Pu-er Tea Cake in Thin Wrapping
Circa 1980s

估價：HKD 160,000 - 280,000

年份：1980 年代
工序：生茶（輕度蒸過）
茶廠：勐海茶廠

此八十年代薄紙8582青餅一筒加一片（共八片），傳統香港倉儲存，餅身厚實，外包裝保存完好，以五至八級粗壯茶芽拼配，以七八級為主。八十年代出品配方的工藝更成熟，近四十年陳期，茶氣十足，樟香味強。此茶來自台灣藏家，經判斷茶有輕度蒸壓過的痕跡。

This lot has been preserved in a traditional Hong Kong warehouse in decent condition. These tea cakes were made by blending coarse and sturdy tea buds of grades 5 to 8, primarily grades 7 and 8, giving a distinct camphor aroma. This lot comes from a Taiwan collector, showing signs of being slightly steamed and pressed.

七子大口中

乾倉



大口中73青餅，又名小綠印，乾倉存儲，一筒七片，原包品相完整。尖出細字內飛見為七十年代之茶品，採用四級茶菁拼製。73青餅為早年的7542普洱茶餅，備受市場青睞。經近四十年的陳化，滿口甜醇餘韻豐滿，被普洱茶收藏界視為珍品，由於需求者眾，故近年價格也愈見高昂。

This lot is well-preserved in a dry warehouse with intact packaging. The tea cakes are made using the earliest 7542 formula and grade 4 tea leaves. With aging, they have developed a full-bodied aroma and offer a rich aftertaste. Due to high demand, their price has been steadily rising in recent years.

Lot **189**

七十年代 73 青餅 · 乾倉

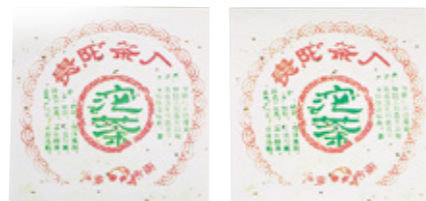
7 Pieces of 73 Pu-er Tea Cake
Circa 1970s

估價：HKD 450,000 - 800,000

倉儲：乾倉
數量：一筒七片
總重量：約 2453g

年份：1970年代
工序：生茶
茶廠：勐海茶廠





Lot **190**

數量：
總重量：
約共 1 kg

六十年代 貴陽沱茶

12 Pieces of Gui Yang Tuo Cha
Circa 1960s

估價：HKD 20,000 - 35,000

年份：1960 年代
工序：綠茶
茶廠：貴陽茶廠

此拍品為1962年貴陽沱茶共十二粒，附大票，屬貴陽產青綠茶，沱茶葉色油潤、多毫，性和味甘，彌漫着獨特的陳香。貴陽茶廠於1961年建廠，1962年生產第一批茶品後便隨即關閉。此批貴陽沱茶是倉庫遺珠，保存至今近六十年，品相良好，市場罕見，殊為難得。

This lot comes with decorative gift boxes and a large ticket. It is crafted from Guiyang leaves, featuring a shiny black surface and tender bottom. Guiyang Tea Factory closed shortly after producing its first batch in 1961, making this lot in excellent condition a rare gem that is hard to find.



Lot **191**

數量：
總重量：
約 2920 g

七十年代
原條 三票孫義順老六安

6 Pieces of Sun Yi Shun Liu An Tea (3 Tickets)
Circa 1970s

估價：HKD 68,000 - 120,000

年份：1970 年代
工序：黑茶
茶廠：安徽祁門

七十年代原條三票孫義順老六安，一條六粒，條索勻齊，色澤黑褐油潤，品相完整。竹箬上題「孫義順六安選幼嫩芽茶製造」陳期逾四十年，味香不澀，滋味甘醇爽口。安徽六安州產之六安茶，在清嘉慶年間的《六安州志》記載被列為貢茶：「天下六安籃茶選料精緻，做工講究，成品色澤烏黑，常年內銷兩廣香港，外銷東南亞諸國；不僅為上乘飲料，且被視為良藥，嶺南中醫診方常用此茶作引，因而被尊為聖茶。」

This lot is packaged in bamboo baskets and leaves, sealed with long bamboo strips stating "Sun Yi Shun Liu An made with selected young tea buds". Historically noted for its medicinal properties, Liu An tea has been recognized as tribute tea since the Qing Dynasty, gaining popularity in Guangdong and Hong Kong, and is also exported to various Southeast Asian countries.

圖片僅為參考

綠印沱茶



此為八十年代中茶牌綠印沱茶，以五枚竹筍殼包為一條，自然倉，保存完整，共四條廿粒，每粒250公克沱茶標準規格，標準直徑10公分，格紋紙外包，綠色手工蓋印，上方印上雲南緊茶，與綠印圓茶包裝頗有相似之處。

Each bundle contains 5 pieces wrapped in bamboo shoot shells, totaling 4 bundles with 20 pieces. Each Tuo Cha weighs 250g and has a diameter of 10cm, meeting standard specifications. The packaging resembles Green Mark, using patterned paper with a similar layout design and a green hand stamp.



Lot 192

八十年代 中茶牌 綠印沱茶

20 Pieces of Chung Cha Brand Green Mark Tuo Cha
Circa 1980s

估價：HKD 120,000 - 200,000

倉儲： 自然倉	數量：	1	1	1	總重量：	約	年份：1980年代 工序：生茶 茶廠：中茶牌
	四條(共20粒)	1	1	1	1	2	
		2	2	2	2	3	
		2	5	7	2	0	
	4	0	0	0	0		
		g	g	g	g		



Lot **193**

倉數總
儲量重
：：量
：：：
自然倉淨重約
／傳統香港倉 3kg

八十年代 廣雲貢餅·散塊

A Can of Guang Yun Pu-er Tea
Circa 1980s

估價：HKD 30,000 - 50,000

年份：1980 年代
工序：生茶
茶廠：中國廣東省茶葉進出口公司

此八十年代廣雲貢餅散塊以大葉種喬木為料，於中國廣東省茶葉進出口公司壓餅。茶菁中度發酵，餅面見銀毫，邊緣呈尖扁狀，餅身堅實。廣東省茶葉進出口公司製普洱茶餅因應廣東及香港人的飲茶習慣，適當調配原料，並於廣東加工。四十多年的陳化，滋味醇厚；散塊狀態有利陳化，老茶陳韻顯明，品飲之選。

These shattered pieces are moderately fermented, featuring a solid body, pointed and flat edges, and silver tea buds on the surface. They represent a custom product made in Guangdong, tailored to the drinking habits of Guangdong and Hong Kong. These shattered pieces enhance the aging process, resulting in a distinct rich and smooth flavor, making them an excellent choice for tasting.



Lot **194**

倉數總
儲量重
：：量
：：：
自然倉淨重約
三盒 2296g
，
302g
，

八十年代 8582 青餅·散塊

3 Boxes of 8582 Pu-er Tea
Circa 1980s

估價：HKD 100,000 - 180,000

年份：1980 年代
工序：生茶
茶廠：勐海茶廠

此八十年代8582青餅散塊，自然倉儲存。外觀乾淨無雜味，大部份仍保存內飛，可見勐海茶廠八中茶內飛，茶餅面條索肥壯，茶芽帶金黃，條索分明，茶餅較厚，鬆緊適中，茶面用五至八級粗壯茶芽拼配，以七八級為主。散塊經過四十餘年陳化，更能轉化至富有印級茶的韻味，茶品繼續存放有極大的轉化空間，宜藏宜飲，是品鑒之佳品。

All pieces are in clean and neat condition and have been stored in a natural warehouse, complete with Menghai Tea Factory inner tickets. They are made from coarse grades 5 to 8 leaves, primarily grades 7 and 8. The tea develops a rich flavor characteristic of premium varieties, with potential for further transformation.



Lot 195

倉數總
儲量重
：：量
：：：
偏一約
乾筒2
倉七3
／自4
然倉1
：g

八十年代 薄紙 7542 青餅

7 Pieces of 7542 Pu-er Tea Cake in Thin Wrapping
Circa 1980s

估價：HKD 180,000 - 300,000

年份：1980 年代
工序：生茶
茶廠：勐海茶廠

此八十年代薄紙7542青餅，一筒七片，薄棉紙外包，青綠色八中茶字，偏乾倉/自然倉儲存，部分非原包。右方蓋紫色「天」字印，屬後蓋章版。紫色天字是香港南天貿易公司訂製茶標記。薄紙7542未能確證為南天公司引進茶品，但品相茶質俱佳，屬少見的八十年代紫天7542青餅。

This lot has been stored in mildly dry or natural conditions, with partial original packaging. The tea cakes are wrapped in thin cotton paper featuring a green "茶" character and a purple stamp on the right, making it a rare version. Although this cannot be identified as imported by Hong Kong Nantian Trading Company, its excellent condition makes it a rare find.



Lot 196

倉數總
儲量重
：：量
：：：
乾一約
倉筒2
：七3
：片1
：g

八十年代 厚紙商檢 8592 圓茶·乾倉

7 Pieces of 8592 Pu-er Tea Cake in Thick Wrapping
Circa 1980s

估價：HKD 80,000 - 120,000

年份：1980 年代
工序：七分熟茶
茶廠：勐海茶廠

此八十年代厚紙商檢8592圓茶，乾倉儲存，包裝完好，竹箬上貼有「中國商檢」貼紙。採用九級粗葉原料，由勐海茶廠輕渥堆發酵而成的早期熟餅。茶韻甘醇，為經典普洱熟茶，可飲可藏。

This lot has been stored in a dry warehouse, featuring intact packaging and a "China Commodity Inspection" sticker. It is an early ripe tea cake made from grade 9 coarse leaves using wet pile techniques by Menghai Tea Factory. As a classic Pu-er ripe tea, it is suitable for both drinking and collection.





Lot 197

倉數 總
 儲量 量
 : :
 偏乾倉 / 自然倉 三片 約
 3 3
 2 1
 9 7
 g 8
 ,
 3
 1
 8
 g
 ,

六十年代 綠字黃印青餅

3 Pieces of Yellow Mark Pu-er Tea Cake
 Circa 1960s

估價：HKD 300,000 - 480,000

年份：1960 年代
 工序：生茶
 茶廠：勐海茶廠

此六十年代綠字黃印共三片，亦稱蘋果綠黃印。偏乾倉/自然倉保存，原包包裝完整，見尖出內飛，餅型較傳統印級茶為小，餅型緊實。以勐海幼葉茶菁壓製，適當發酵，餅面條索級數高，偶有一些茶芽與茶骨拼入，皆粗壯肥美，茶面茶芽已陳化為深金黃色。陳化後茶氣剛強。喉韻醇厚，更有獨特的蘭花香藥韻，故備受台灣茶人推崇，號為黃印韻。

This lot comes in complete original packaging and has been preserved in mildly dry or natural storage. The tea cakes are smaller in size and include fine print inner tickets. The surface features high-grade leaves, with occasional tea buds and stems mixed in, along with deep golden buds. It exhibits distinctive Yellow Mark characteristics, featuring a fragrant orchid aroma and medicinal undertones, making it an excellent choice for both collection and tasting.



Lot 198

倉數 總
 儲量 量
 : :
 自然倉 一片 約
 3 3
 3 3
 g 3
 g

五十年代 藍印鐵餅

A Piece of Blue Mark Pu-er Tea Cake
 Circa 1950s

估價：HKD 250,000 - 380,000

年份：1950 年代
 工序：生茶
 茶廠：勐海茶廠

此五十年代藍印鐵餅外包裝紙不完整，但由紙洞可以看到條索粗壯，芽頭明亮，茶餅外觀稍有出油。鐵餅緊壓，轉化緩慢，有生茶老配之妙，比紅印口感更強烈霸氣，更具活性。配茶風格萌芽偏重，採用勐海茶菁為原料，可見八中內飛埋於茶餅之內，餅型微向腹面拱成碗形，條索粗壯緊實，採用易武喬木茶菁為原料，餅面金芽毫多，茶芽較為粗壯，屬「印級茶」中茶氣偏強之作。

This lot has been preserved in a natural warehouse. The incomplete packaging reveals a shiny surface compressed with thick, robust tea leaves and bright buds. Due to the tight pressing technique, a slow transformation creates a balance of fresh and aged tea flavors that is more intense than Red Mark Pu-er. The tea cake is slightly arched into a bowl shape and features a clear inner ticket. This lot is a classic representative of tea from the 1950s and a strong choice among Yin Grade Pu-er.

藍印鐵餅 / 昆明鐵餅

足吾所好 古董級普洱茶及佳茗專場

此拍品採用易武喬木茶菁為原料，採用當時新研發的製作工藝，金屬模具直接壓製脫模而成。由於鐵餅緊結密實，新茶膠質更易提早釋放出來，使豐富的茶膠勻齊地分佈在茶葉表層，光澤鮮明。此次拍品自然倉/傳統香港倉保存，狀態良好，條索粗壯。同時因茶餅緊實，後續發酵轉變緩慢，經七十年的陳化，茶湯的口感較傳統餅形更為濃厚，氣韻更足且充滿活性，回甘迅速強勁，餘韻悠長。此拍品七片外包裝紙均為藍印鐵餅紙，唯其中有兩片未能見到內票，故此兩片未能確定為藍印鐵餅或是六十年代昆明鐵餅。

This lot is well-preserved in a natural or traditional Hong Kong warehouse. Two of them cannot be identified as Blue Mark or Kunming Pu-er since no tickets were seen. The tea cakes were tightly pressed using iron molds, allowing for a steady transformation and uniform distribution of resin, resulting in a bright sheen. They are made from Yiwu tea leaves with sturdy strands and golden tea buds. After 70 years of slow transformation, the tea has developed a richer mouthfeel with a lingering taste, gradually reaching its optimal drinking period.



Lot 199

五十、六十年代 藍印鐵餅 / 昆明鐵餅

7 Pieces of Blue Mark or Kunming Pu-er Tea Cake
Circa 1950s/1960s

估價：HKD 1,400,000 - 2,200,000

倉儲：自然倉 / 傳統香港倉	數量：七片	總重量：約
	357g	335g
	331g	334g
	368g	335g
		357g

年份：1950 / 1960年代
 工序：生茶
 茶廠：勐海茶廠 / 昆明茶廠

乙級藍印

此件五十年代乙級藍印青餅兩片，自然倉保存，是早期有等級標註版本，茶葉配茶風格萌芽重，陳化日久，茶韻滋味富層次，金黃油亮，粗幼有序，品相甚佳，稍有雜味。經歷超過半個世紀的陳化，樟香馥鬱高雅，收藏品飲皆宜。新中國成立後，中茶公司早期製作之初，曾擬定分為甲乙二級並印製帶有分級字樣的包裝，然所採茶菁皆品質上乘，遂以藍色油墨遮蓋甲乙分級字樣，故而得名藍印，與紅印並列印級茶經典佳作。

This lot is an early version that has been preserved in a natural warehouse. The tea cakes are made from a blend of shiny, thick tea leaves with clear buds. Initially, the packaging was labeled with "Grade A" or "Grade B" for grading purposes, but were later covered with blue ink because all the tea cakes were deemed exceptional quality. After aging, the tea exhibits a rich and elegant camphor aroma, making it suitable for both collection and drinking.



Lot 200

五十年代 乙級藍印青餅

2 Pieces of Grade B Blue Mark Pu-er Tea Cake
Circa 1950s

估價：HKD 500,000 - 800,000

倉儲：	數量：	總重量：	年份：
自然倉	兩片	約303g	1950年代
		322g	工序：生茶
			茶廠：勐海茶廠

Lot 201

五十年代 早期大字紅印青餅 · 乾倉

2 Pieces of Early Red Mark Pu-er Tea Cake
Circa 1950s

估價：HKD 1,350,000 - 2,000,000

倉儲：	乾倉	數量：	兩片	總重量：	約 321g, 334g
-----	----	-----	----	------	--------------

年份：1950年代或更早
 工序：生茶
 茶廠：佛海茶廠 / 勐海茶廠



1939年范和鈞先生調至雲南佛海負責創辦實驗茶廠，是首位推廣機械化制茶，一年後試製成雲南紅茶、紅印普洱圓茶及綠印普洱圓茶。較早期的大字紅印被認為或可追溯至1940至1947年間范和鈞時期制作的茶品。直至1949年，佛海茶廠更名勐海茶廠，由唐慶陽先生接任廠長，繼續製作紅印茶餅。早期紅印圓茶，在當時之計劃經濟背景下，原料使用主導權皆歸國營茶廠所有，配茶上，可選用勐臘最好的茶菁，野放易武正山古樹壯葉為料，嚴謹芽葉配比，配茶風格茶菁級數較高，萌芽比例重，並沿用傳統制茶壓模之法及壓製發酵方法，茶性較為剛烈，且茶氣更足韻味豐富。當中採用了「加重萌芽」的配茶方法，故茶性遠比一般紅印剛烈、霸氣。

此早期大字紅印青餅，來自一位資深普洱藏家，該茶於藏家購入時部分有開驗過，確保為大字紅印。並於比較早期進入普洱茶市場，本拍品為藏家精挑細選，且全部為早期大字紅印，乾倉存放，其粗體大字的手工拓印包裝見早期大紅印痕跡。紙質選取了手工長纖維紙質。歷經近七十多年，仍保存良好，其包裝紙稍有蟲蛀，重量十足，兩片分別重321克及334克。經甲子陳期，茶氣十足，生津極致、喉韻持久，濃郁芳香而不霸道，舌底鳴泉，唇齒留香。拍品屬早期粗體版本，因其陳化品質卓越，傳世稀少，被普洱藏家譽為為印級茶之首。印級茶之首為大紅印。舌底鳴泉，唇齒留香。著名文化學者余秋雨先生點評。

As early as 1939, Mr. Fan Hejun pioneered mechanical tea production at Fohai Tea Factory and successfully produced Yunnan Black Tea, Red Mark, and Green Mark Pu-er in one year. Therefore, early Red Mark Pu-er was believed to date from the production period of Mr. Fan Hejun between 1940 and 1947. By 1949, the Fohai Tea Factory was renamed the Menghai Tea Factory, with Mr. Tang Qingyang taking over as factory director, continuing the production of Red Mark Pu-er. Produced under a state-owned factory, early Red Mark was benefited from having obtained control over raw material selection. Using only the finest wild Yiwu tree leaves, with a rigorous bud-to-leaf ratio and a higher grade, along with traditional tea-making methods and fermentation processes, the tea cakes have a much stronger and more assertive flavor than other Red Mark Pu-er.

This lot comes from a seasoned Pu-er collector who entered the market relatively early and was carefully stored in a dry environment in good condition, with slight insect damage to the packaging. The two tea cakes weigh 321g and 334g, respectively. After aging for nearly 70 years, the tea essence is abundant, with a lasting sweetness and a fragrant aftertaste. This early version with bold character printing is considered the pinnacle of Red Mark Pu-er due to its exceptional aging quality and rarity, earning high praise among Pu-er collectors.

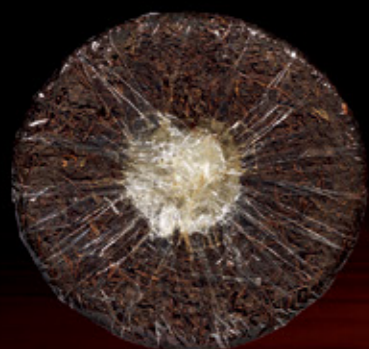
早期大字紅印

乾倉

小票敬昌號

敬昌號即雲南茶莊中之佼佼者，於清代光緒年間創設於江城縣猛烈鎮老街，後改名信昌號。1921年時敬昌號茶莊是江城地方最大最有名的普洱茶莊之一，在所有先期私人茶莊的茶品中，首推敬昌和同慶圓茶；而敬昌號是當中製造技術最優良，其茶餅壓制技術、筒包技術、竹箬箴條材料、內飛內票的設計和印刷，以及貯存陳放方法都是首屈一指。茶餅中另有一張白底紅字圓標內飛，敬昌號內飛有大小兩式，人稱大飛、小飛，右方寫「本號內飛以往太大，為觀瞻起見」，左方寫「茲改良縮小，茶品尤佳，特此聲明」。可見小內飛敬昌號茶餅，日益改良精進。敬昌號選料精良、品質優異，製成的茶餅表面有條索金黃，特色鮮明。其做工和包裝優美之極，尤其壓製技術一流，餅體飽滿圓潤，凹凸有致，排列清晰，形態之美無與倫比。現存敬昌號多屬世紀年代產品，有野樟香氣，水性極為細膩柔和，為普洱茶品中最為細滑者。此次上拍的敬昌號，小飛版，保存狀態良好，品相上佳。

Jing Chang Hao is a prominent Yunnan tea factory established during the Guangxu period of the Qing Dynasty in Menglie Town, later renamed Xin Chang Hao. By 1921, it had become one of the largest tea factories, known for its superior manufacturing techniques, including tea cake pressing, packaging, and ticket design. The tea cake features a small inner ticket with red printing, a revised design for aesthetic reasons. This lot has been preserved in a mildly dry warehouse and is in excellent condition. Jing Chang Hao is renowned for its high-quality raw materials and distinctive golden surface. After nearly a century of aging, the tea exudes a smooth taste with a wild camphor aroma, making it one of the most delicate Pu-er teas available.



Lot 202

四十年代 敬昌號 小飛版

A Piece of Jing Chang Hao Pu-er Tea Cake (Small Ticket)
Circa 1940s

估價：HKD 450,000 - 800,000

年份：1940年代
工序：生茶
茶廠：雲南敬昌號茶莊
總重量：約306g
數量：一片
倉儲：偏乾倉





Lot 203

倉數：4
 儲量：3
 ：傳四
 統片
 香：3
 港：5
 倉：4
 ：4
 ：6
 ：0
 ：8
 ：8
 ：

號級茶 同昌黃記號

4 Pieces of Tong Chang Pu-er Tea
 Circa 1960s

估價：HKD 320,000 - 600,000

年份：1960 年代
 工序：生茶
 茶廠：香港同昌行

此四片同昌黃記號級茶(配原竹殼)，竹殼上印有「普洱貢茶 同昌黃記」字，傳統香港倉，稍有雜味，保存狀態完好、內飛埋茶餅內，依稀可見藍字下款印「同昌黃記主人」。六十年代的同昌黃記繼承同昌號傳統，精選小葉種喬木茶嫩葉，梗條較少，底韻茶氣十足，陳化半世紀後，帶有古董茶的陳和醇厚，水性細膩甘甜，陳化潛力與日俱增。

This lot has been preserved in a traditional Hong Kong warehouse in good conditions. Inner ticket is deeply buried showing blue. Using tender small leaves, the tea has complex flavors and great potential for further transformation.

Lot 204

倉數：3
 儲量：3
 ：自三
 然片
 倉：3
 ：6
 ：8
 ：2
 ：4
 ：8
 ：5
 ：8
 ：

五十、六十年代
 白報紙宋聘號

3 Pieces of Song Pin Hao Pu-er Tea Cake in
 White Newspaper
 Circa 1950s/1960s

估價：HKD 150,000 - 220,000

年份：1950/1960 年代
 工序：生茶
 茶廠：泰國宋聘號茶莊

此五十、六十年代白報紙宋聘號三片，自然倉保存，其中一片茶餅有白報紙外包，餅身較厚，保存完整，茶餅無雜味，唯有蟲蛀痕跡，另外兩片沒有外包紙，分別可見筒票及藍內飛，茶餅緊結，茶菁條索分明，芽毫亦多，傳統工藝拼配。解放年代雲南茶商遷居泰國，採用泰國及雲南茶菁和家傳工藝，仿製舊時號級名茶，美名「火燒雲」。經逾半世紀陳化，藥蔘香氣韻十足，宜藏宜飲。

This lot represents early production from Song Pin Hao's Thai factory, using Yunnan tea leaves and traditional blending techniques. The tea cakes are in good conditions with no off flavours. One of which is wrapped in white newspaper with signs of insect damage. After aging in a natural warehouse, the tea exhibits an elegant and lingering medicinal aroma, reminiscent of the Song Pin tea heritage, making it suitable for both collection and consumption.



Lot 205

倉數總
儲量重
：：約
：兩片 3
：自然倉 3
： 1
： 8
： 3
： 3
： 0
： 8

八十年代 厚紙 8582 青餅

2 Pieces of 8582 Pu-er Tea Cake in Thick Wrapping
Circa 1980s

估價：HKD 180,000 - 280,000

年份：1980 年代
工序：生茶
茶廠：勐海茶廠

此八十年代厚紙8582青餅共兩片，自然倉保存，此厚紙8582青餅，外形圓厚端正，餅面條索肥壯，鬆緊適中，茶質出色。屬八十年代勐海經典配方精工製作，茶面用五至八級粗壯茶芽拼配，以七八級為主，陳韻有印級風範，確為中期茶精品。

This lot is in a perfect round shape and wrapped in thick cotton paper. Crafted using classic Menghai formula, it features a blend of robust tea buds graded from 5 to 8, predominantly from grades 7 and 8. After aging in a natural warehouse, the tea has developed an aroma similar to that of Yin Grade Pu-er, making it one of the finest products from the 1980s.



Lot 206

倉數總
儲量重
：：約
：三片 3
：乾倉 4
： 8
： 8
： 3
： 7
： 4
： 8
： 3
： 5
： 3
： 8

八十年代 薄紙紫天 8592 圓茶 · 乾倉

3 Pieces of 8592 Pu-er Tea in Thin Wrapping
Circa 1980s

估價：HKD 40,000 - 60,000

年份：1980 年代
工序：熟茶
茶廠：勐海茶廠

8592紫天圓茶乃8582的同系茶品，採用九級粗葉原料，由勐海茶廠渥堆發酵而成的早期熟餅。香港南天貿易公司特別向勐海茶廠訂製一批8592，在包裝印了紅紫色「天」字，因而被稱「8592紫天」。此拍品三片，餅面較大，品相完整。薄紙版本為八十年代末茶品，當時配方已趨向完善，口感更貼近當時市場需求。

8592 is part of the same series as 8582. It is an early ripe tea made from grade 9 coarse leaves using wet pile techniques. Hong Kong Nantian Trading Company ordered a custom batch of 8592 from Menghai Tea Factory, which features a purple red stamp distinguishing it from other 8592 batches. This lot is larger in size, wrapped in thin paper, and has been well-preserved in dry storage under excellent conditions.





約14x9.5x3.5cm

約14x9.5x3cm

Lot **207**

數量：
總重量：
：約
兩塊 2668,226g

七十年代 73 磚·硃砂紅版

2 Pieces of 73 Pu-er Tea Brick
Circa 1970s

估價：HKD 68,000 - 100,000

年份：1970 年代
工序：六分熟茶

此73磚硃砂紅版兩塊，保存良好，深硃砂紅字印刷，具有文革磚的外包特色，採用粗壯五級茶菁，經濕堆發酵，再用紅茶末灑面壓制成磚，茶磚背面有明顯乳釘布紋。73磚乃熟茶的鼻祖，以73磚·硃砂紅版，年份最久。經過四十多年的陳期，香氣由蔘香轉成沉香，喉韻上佳，別具老古董茶的風範。

This lot is packaged in yellow paper with vermilion characters, reflecting the characteristics of Cultural Revolution bricks. They are made from coarse grade 5 leaves that have been heavily wet-piled and pressed into bricks, featuring a sprinkle of black tea powder on the surface and a distinct linen texture on the back. After over 40 years of aging, the aroma has shifted from ginseng notes to a rich, deep fragrance.



約14x9.5x3cm

Lot **208**

數量：
總重量：
：約
四塊 1011g

七十年代 73 厚磚

4 Pieces of Thick 73 Pu-er Tea Brick
Circa 1970s

估價：HKD 100,000 - 160,000

年份：1970 年代
工序：熟茶
茶廠：景谷茶廠生產，昆明茶廠銷售

此義安茶莊翻包版的73厚磚，一組四塊，保存完好，採用粗大五級茶菁，經濕堆發酵，再用紅茶末灑面壓制成磚，茶磚背面有明顯乳釘布紋。「73厚磚」出品後，香港「義安茶莊」購入重新包裝，以米色臘紙底部有綠間白字香港義安茶莊字號資料外包。陳期逾四十年，入口厚滑甜醇，其香氣由蔘香轉成沉香，純正傳統陳茶韻，品飲佳品。

This lot displays the characteristics of Cultural Revolution bricks, made from coarse grade 5 leaves that were heavily wet-piled and pressed. It has a sprinkle of black tea powder on the surface and a distinct linen texture on the back. Originally purchased by Hong Kong Yi An Tea Factory, it was repackaged in beige wax paper marked with white-on-green text. After over forty years of aging, the aroma has evolved from ginseng notes to a rich, deep fragrance.



約15x10x2.5cm

Lot 209

數量：廿二塊
總重量：約5342g

八十 / 九十年代 普洱茶磚

22 Pieces of Pu-er Tea Brick
Circa 1980s/1990s

估價：HKD 48,000 - 68,000

年份：1980/1990 年代
工序：熟茶

此批八十/九十年代普洱茶磚，共二十二塊，其中一片缺角，黃紙包裹，尺寸為15x10x2.5cm寬版形制。1960年代計劃經濟下，雲南省茶葉進出口公司採取統一標準化生產作業模式。標準化制茶、標準化茶樣收購、標準化成品質檢，令茶品品質有所保證。經過數十載陳化，老茶陳韻出。

This batch contains 22 pieces of pu-er tea bricks measuring 15x10x2.5cm, all preserved intact with yellow paper, except for one piece that has a missing corner. In the 1960s, standardized mass production was adopted, covering everything from tea processing to tea sample purchases and quality inspections, ensuring a consistently high quality of the tea products.



Lot 210

倉數：十五塊
總重量：約1501g
儲：乾倉 / 自然倉

八十年代末 92 方磚
(早期孔雀之鄉) ·
乾倉 / 自然倉

15 Pieces of Early 92 Pu-er Tea Brick
Circa Late 1980s

估價：HKD 120,000 - 220,000

年份：1980 年代末
工序：生茶
茶廠：勐海茶廠

此八十年代末勐海茶廠推出的100克普洱方磚共十五塊，包裝盒背後印有孔雀之鄉圖案。壓制規格較小，僅100克，選用高級別原料，條索緊實勻齊，磚面撒以細嫩芽頭，茶芽肥壯，金芽明顯，磚面烏潤油亮。底部註明勐海茶廠出品。八十年代方磚口感稠厚，與92方磚相比，老茶陳韻更現。

In the late 1980s, Menghai Tea Factory began pressing smaller 100g tea bricks using higher-grade leaves with fine tender buds on top. The surface has a glossy, oily appearance, making it finer than other Pu-er teas of the time. Compared to the 1992 square tea bricks, these 1980s bricks have a thicker texture and more pronounced flavor.

六十年代

老白茶



佳茗製

足吾所好 古董級普洱茶及佳茗專場



Lot 211

倉數總
儲量重
：：量
乾倉一淨
：罐重約
1
k
g

六十年代 老白茶·乾倉

A Can of Old White Tea
Circa 1960s

估價：HKD 90,000 - 130,000

年份：1960 年代
工序：白茶

此六十年代老白茶共約1公斤，乾倉保存，經陳化後顯露古樸藥香，藥性亦更溫平。陳年老白茶採用傳統工藝，一芽三、四葉，葉多芽少。白茶耐久貯，早於清代即為重要外銷茶品種，歷史上白茶產地範圍小，產量較低，且品飲消耗殆盡，存世陳年老白茶甚少。當年為方便出口，白茶版採用切碎工藝，更利於陳化。

This lot emanates an ancient rustic medicinal fragrance and delivers a mellow, smooth taste after being aged in dry storage. To facilitate export, a cut-and-shred process was used, which aids in aging. Despite being an important export since the Qing Dynasty, it has a low yield due to the limited production area. This lot represents a rare and irreplaceable testament to the past.

八十年代

老白茶



佳茗製

香港佳茗 2024 秋季拍賣會



Lot 212

倉數總
儲量重
：：量
乾倉一淨
：罐重約
9
0
0
g

八十年代 老白茶·乾倉

A Can of Old White Tea
Circa 1980s

估價：HKD 30,000 - 50,000

年份：1980 年代
工序：白茶

八十年代陳年老白茶，一芽三四葉，帶茶梗，茶芽轉深黃，當年為方便出口採用切碎工藝，更利於陳化，存放得當，轉化狀態極佳，近四十年存放得當，轉化後出藥香。白茶茶多酚含量較高，儲存時間越久，白茶的藥用價值就越高。有「一年茶、三年藥、七年寶」之說，白茶具有存儲收藏價值。

The blend consists of one bud with three or four leaves, featuring slightly yellow buds. To facilitate export, a cut-and-shred process was used at that time, which aids in aging. There is a saying: "One year turns tea, three years turns medicine, seven years turns treasure", the distinct medicinal aroma highlights the storage and collectible value of white tea.



足吾所好

古董級普洱茶及佳茗專場

Lot **213**

數量：兩袋
總重量：淨重約 10 kg

七十、八十年代 老六堡

2 Bags of Liu Bao Tea
Circa 1970s/1980s

估價：HKD 60,000 - 100,000

年份：1970/1980 年代
工序：黑茶（生茶工藝）
茶廠：梧州（香港加工、出口馬來西亞）

此七十、八十年代六堡茶共約十公斤，產地梧州，在香港加工，早年出口至馬來西亞，至今回流香港。傳統古法工藝制作，嫩尖幼葉為原料，乾倉存放。乾茶香氣純正，有淡淡的松煙香味及藥香。口感乾淨，有濃郁的松煙檳榔香及微藥香，茶韻茶氣皆強，體感明顯及口感舒服。六堡茶從梧州原料出產到香港，再轉運出口到馬來西亞銷售。

This lot contains 10kg of Liu Bao tea. Made using traditional techniques with tender leaves, the dry tea has a pure aroma featuring notes of betel nut, medicinal herbs, and pine smoke. The taste is prominent, with flavors of wood ginseng and a lingering finish. Liu Bao tea is produced in Wuzhou, then transported to Hong Kong before being exported to Malaysia for sale.



香港仕宏 2024 秋季拍賣會

Lot **214**

數量：一罐
總重量：淨重約 17 kg

八十、九十年代 老六堡

A Can of Liu Bao Tea
Circa 1980s/1990s

估價：HKD 130,000 - 230,000

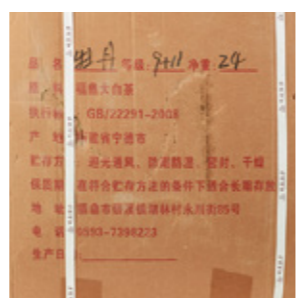
年份：1980/1990 年代
工序：黑茶

此八十、九十年代老六堡共約17公斤，品相良好，條索緊實，經歲月陳化，色澤黑褐光潤，茶氣綿長。六堡茶興於唐宋，盛於明清，屬古老黑茶類。六堡茶以紅、濃、陳、醇為其四大特色，具有獨特檳榔香氣，越陳越佳。三十年以上的陳年老六堡，色澤黑褐油潤，帶有檳榔、松煙香味，清爽醇厚，湯色濃紅，滋味甘醇，略帶藥香。

This lot contains 17kg of Liu Bao Tea and is in good condition. Originating in the Tang and Song dynasties and flourishing during the Ming and Qing dynasties, Liu Bao Tea is an ancient type of black tea. Its key features include a red color, strong flavor, and mellow taste, with a unique betel nut aroma that improves with age. Aged for over 30 years, this tea offers a rich flavor, deep red color, and hints of betel nut and pine smoke.



「足吾所好」古重級普洱茶及佳茗專場



Lot **215**

倉數：總重量：淨重約 12kg
 儲量：一箱
 乾倉

2008年原箱 立達茶廠 白茶·乾倉

A Box of Old White Tea 2008
 估價：HKD 50,000 - 80,000
 年份：2008年
 工序：白茶
 茶廠：立達茶廠

此2008年原箱福鼎白茶為福鼎市立達茶廠出品，取9及11級牡丹為料，以產於福建省福鼎市立達鄉而得名，立達白茶是福建白茶中的代表品種之一，並於2009年福鼎白茶榮獲國家地理標誌認證。立達白茶採摘嚴謹，只揀二三葉芽新嫩葉，工藝繁複，年產量有限。白茶多年後，滋味愈發醇厚，品飲價值也相應升高。

This lot is produced by the Lida Tea Factory in Fujian, using grade 9 and 11 tea leaves. Lida white tea is a renowned variety from Fujian and received national geographical indication certification in 2009. The tea is meticulously harvested, selecting only the tender buds with 2 or 3 leaves. Aged white tea presents a delicate flavor with a subtle orchid aroma and a long-lasting finish. The aging process deepens its flavor, adding to its value.



Lot **216**

倉數：總重量：約 237.2g
 儲量：十四片
 自然倉

六十 / 七十年代初 廣雲貢餅

14 Pieces of Guang Yun Pu-er Tea Cake
 Circa 1960s/Early 1970s
 估價：HKD 50,000 - 80,000
 年份：1960/1970 年代初
 工序：生茶
 茶廠：廣東茶葉公司

此六十/七十年代初的廣雲貢餅共十四片，自然倉保存，茶餅埋有八中茶小方票，廣東所使用鐵模壓制窩底較細小，餅形緊實。六十年代選料自雲南調撥茶菁，於廣東壓制餅，有小貢茶美稱。陳化五十年多的廣雲貢茶，估價相對同年份的雲南七子餅為低，是對有年份追求的普洱藏家另一不錯選擇。

This lot includes small inner tickets and has been aged under natural conditions. In the 1960s, Yunnan tea leaves were pressed using a smaller iron mold in Guangdong, resulting in a more compact shape known as "Small Tribute Tea". This lot is priced relatively lower than other teas from the same period, making it a good choice for collectors seeking aged options.

· 香港仕宏 2024 秋季拍賣會 ·

索引

INDEX

圖錄號

號級茶

百年 末代緊茶 157

百年 藍標 宋聘號(附白水清簽名) 132

百年 原筒 陳雲號(白紙黑字大票) 155

百年 早期 可以興茶磚 129

百年 雙獅同慶號(早期五色旗版)..... 130

百年 雙獅鴻泰昌・藍標 131

百年 同昌號 黃文興 154

百年 鼎興號・藍標 156

三十年代 河內號 紫標 128

號級茶 普慶號 134

四十年代 敬昌號 小飛版 202

四十年代左右 不知名號級茶・藍標 153

號級茶 同昌黃記號 203

五十、六十年代 白報紙宋聘號158, 204

五十、六十年代 福祿貢茶 159

印級茶

五十年代 早期大字紅印青餅124, 201

五十年代 早期大字紅印青餅 一點紅版 152

五十年代 金山樓舊藏 原筒早期 大字紅印青餅..... 127

五十年代 金山樓舊藏 無紙紅印 126

五十年代 無紙紅印149, 151

五十年代 紅印鐵餅 / 藍印鐵餅・散塊 148

五十年代 原筒大字綠印及甲級藍印青餅 125

五十年代 甲級、乙級藍印青餅 150

五十年代 乙級藍印青餅 200

圖錄號

五十年代 藍印鐵餅 123, 133, 198

五十、六十年代 藍印鐵餅 / 昆明鐵餅 199

60-70年代

六十年代 八中黃印青餅 147

六十年代 綠字黃印青餅 197

七十年代初 小黃印青餅 160

七十年代中期 小黃印青餅 一認真配方 122

七十年代 首批7572青餅(大口中版本) 106

七十年代 73青餅 189

七十年代 紅帶青餅 (73紅絲帶) 146

七十年代 大藍印圓茶120, 162

七十年代 7452熟茶王 163

80年代

八十年代初 73青餅 118

八十年代初 雪印青餅114, 164

八十年代 薄紙7542青餅 195

八十年代 厚紙7542青餅112, 116

八十年代 薄紙8582青餅 102, 117, 182, 188

八十年代 厚紙8582青餅 108, 137, 205

八十年代 厚紙商檢茶(8582配方) 119

八十年代 8582青餅・散塊 194

八十年代末 88青餅 101, 107, 113, 136, 165

八十年代末 厚紙88青餅 105

八十年代末 89青餅 187

八十年代 7572圓茶 167

八十年代 薄紙8592圓茶166, 206

索引

INDEX

圖錄號

八十年代 厚紙商檢8592圓茶 196

90-2000年代

92青餅(無飛版) 104, 138, 181

93小票(水藍印)青餅 178

94業字青餅(8582配方)..... 183

96橙中橙青餅(7532配方) 179

96紫大益青餅103, 186

97水藍印青餅111, 184

97黃印青餅(8582配方)..... 109

97老樹圓茶(最早班章概念茶)..... 185

首批99易昌號(宋體精品)..... 110

首批99易昌號小餅(篆體版)..... 217

下關

六十年代 昆明鐵餅121, 161

七十年代 中茶牌簡體字鐵餅 145

八十年代 下關繁體字8653鐵餅 115

八十、九十年代 下關繁體字8653鐵餅 180

六安/六堡

百年 汪立春字號老六安 169

三十/五十年代 原條 孫義順老六安 135

民國 三票孫義順老六安 168

六十年代 龍福記瑞春源茶莊 三票孫義順老六安 170

七十年代 原條 三票孫義順老六安 191

七十年代 香港德信行訂制 香六安 171

五十、六十年代 嫩尖正原度 老六堡139, 142

七十、八十年代 老六堡 213

圖錄號

八十、九十年代 老六堡 214

茶磚

七十年代 73磚・硃砂紅版 207

七十年代 73厚磚 208

七十年代 73寬版磚 174

七十年代 7562青磚 175

七十年代 79景谷厚磚 176

八十/九十年代 普洱茶磚 209

八十年代末 92方磚177, 210

普洱散茶

七十年代 原蓆包 北越大葉種青毛茶(111批次)..... 140

五十、六十年代 野生棗香喬木大葉散茶 141

白茶

六十年代 老白茶143, 211

七十年代 老白茶 144

八十年代 老白茶172, 212

九十年代 老白茶・高級白牡丹 173

2008年 原箱 立達茶廠白茶 215

其他

六十/七十年代初 廣雲貢餅 216

六十年代 貴陽沱茶 190

八十年代 廣雲貢餅散塊 193

八十年代 中茶牌 綠印沱茶 192

九十年代 普洱緊茶 218

一般銷售說明及條款

以下協議適用於仕宏拍賣有限公司（L&H Auction Co., Ltd., 簡稱「仕宏拍賣」）舉行的所有拍賣會。仕宏拍賣、拍品寄售人及買家均受此協議約束。如有任何爭議將以中文版本為準。

1. 買家佣金及付款

買家除支付落槌價外，並同意支付予仕宏拍賣買家佣金及任何適用之稅項及款項。

i) 買家佣金

競投者競投成功後，即成為該拍賣品的買家。買家應支付仕宏拍賣佣金，其計算方式如下：每件拍賣品的落槌價中，在港元 1,000,000 或 以下之部分，該部分金額的佣金以 19% 計算；超過港元 1,000,000 至港元 3,000,000 之部份，該部分金額的佣金以 17%計算；超過港元 3,000,000 之部份，該部分金額的佣金以15%計算。買家同時應支付給仕宏拍賣該買家負責的各項費用，且認可仕宏拍賣可根據仕宏拍賣的寄售委託拍賣合約規定，向寄售人收取佣金及寄售人負責的各項費用。

ii) 佣金優惠

買家於拍賣會當天起於 7 天內以現金、支票、銀行轉帳或銀行電匯方式全數繳付拍賣所有款項，均可獲減免 2% 買家佣金以作優惠。

iii) 付款方式

買家須於拍賣會後的 15 天內全數繳付拍賣所有款項。仕宏拍賣接受以現金、支票、信用卡 (VISA, MASTER, 銀聯卡)、銀行轉帳及銀行電匯方式結帳。若買家於拍賣會當天起 7 天後才以信用卡付款，則須額外支付發票總額的2%作利息。

2. 拍賣品成色及圖錄

所有拍品均以其現況出售。不可退貨，所有銷售均為一錘定音。拍賣品圖錄中的文字介紹、估價、圖片及以其他形式的影像製品和宣傳品僅供參考，並不代表仕宏拍賣就拍賣品之真實性、價值、色調、品質及瑕疵（如有）等作擔保。仕宏拍賣可於拍賣前對上述之介紹及評價作出修訂，並無需對其中的不準確或遺漏之處負上任何責任。仕宏拍賣建議買家在拍賣前親自前來鑑定拍品，自行判斷，以瞭解拍品狀況。如拍賣品在圖錄及其他形式的圖示、影像製品和宣傳品中，因印刷或攝影技術等原因導致與實物的色調、顏色、層次、形態等存在誤差，則以實物為準。競投者在任何情況下就以上成色評級說明所作的投標決定，仕宏拍賣將不會負任何責任。

3. 估價

本圖錄中所有價格均以港幣（“\$”）顯示。估價並非指該拍品自身應有的市場價值或最終價格。拍品估價只供參考，在拍賣會開始前，仕宏拍賣可對估價進行調整。

4. 預展

仕宏拍賣會將所有拍品於拍賣前進行公眾預展，仕宏拍賣建議買家在預展期間親自前來鑑定拍品及瞭解其狀況；買家需對競投拍品的行為負責，不應依賴圖錄中的說明以及其他形式的影像製品和宣傳品之陳述作出決定。一旦做出競投決定即表明買家接受拍品之一切現狀，在拍品成交後不可解約，事後關於成交品投訴亦不予受理。

5. 撤回拍品

仕宏拍賣有權於拍賣前撤回任何拍品。

6. 保證金

競投者應在參加仕宏拍賣之拍賣活動前辦理拍賣投標牌登記，同時完成交納拍賣會保證金及得到仕宏拍賣的確認。

所有保證金必須以銀行轉帳、電匯或現金方式付款。仕宏拍賣不接受包括代理人之內任何第三方支付。如仕宏拍賣未在拍賣活動登記限期內收到競投者之保證金及付款憑據，則視為競投者拍賣投標牌登記申請無效。如競投者未能成功競投任何拍賣品，同時於仕宏拍賣沒有任何欠款紀錄。仕宏拍賣將安排在拍賣活動結束後十個工作日內退回閣下已付的保證金(不包含利息)。如退回保證金款項涉及任何兌換匯率損失或費用，一概由競投者承擔。

競投者如通過仕宏拍賣的「網絡同步競拍」平台參與競拍，保證金的安排及其他相關事宜，請參閱http://lhauction.com.hk/tc/buy「網上競投規則」並按指示交納保證金。

7. 競投、拒絕和保留價

競投者競投成功後，即成為該拍品的買家。仕宏拍賣及拍賣官可以拒絕任何視為出價過低的公開競投並撤回拍品。成交價並不包括買家佣金及其他附加費用，付款詳情可細閱本條款中第1條和第11條。每件拍品都設有一個保留價。在競投過程中，拍賣官可以拒絕任何低於保留價的競投。

8. 透過傳真、電話或電郵的委託競投

競投者可委託仕宏拍賣進行競投。競投者必須在拍賣會開始前48小時透過電郵、傳真或親身遞交投標委託書及相關文件。圖錄、申請表及競投委託書等所需文件可從官方網址下載: http://lhauction.com.hk/tc/buy。

所有競投將按照拍賣條款及競投者出價，盡可能以最低價格執行。請注意，為買家的利益起見，敬請所有競投者盡早交回委託表格。如有兩位或以上的競投者就同一件拍品開出相同價格，仕宏拍賣將以先到先得的原則處理。電話競投者會於拍賣會開始前，收到仕宏拍賣的致電，但仕宏拍賣不能保證所有電話均可以成功接通，電話競投者須承擔風險。

如未能及時提供所需資料，或在競投過程中出現因競投者疏忽而引致的任何過失，仕宏拍賣將不會為此承擔任何責任。

9. 網上競投

競投者可通過仕宏拍賣的「網絡同步競拍」平台參與競拍。準買家參加仕宏拍賣網絡拍賣活動，須於拍賣開始前的三個工作天前完成網絡帳戶的註冊並通過仕宏拍賣的審批，同時於拍賣開始前的兩個工作天前完成交納保證金，方可進行網上競投。有關網上競投登記及其他相關事宜，可參閱http://lhauction.com.hk/tc/buy「網上競投規則」。

10. 拍賣成功

最高競投價經拍賣官落槌，或以其他公開表示買定的方式，即表明該競投人競投成功，成為該拍品的買家，亦表明買賣雙方之間已訂立拍賣合約。

11. 擁有權和風險

買家須全額繳付落槌價及買家佣金，並經由仕宏拍賣確定款項被接納後，買家可獲得該拍賣品的擁有權。同時，有關該拍品的風險亦會轉移至買家。

12. 付款及賠償條款

所有款項須於拍賣會後的15天內全數繳付，可採用以下任何一種付款方式，以港幣支付拍品的成交價及買家佣金。

i) 銀行轉帳

ii) 銀行電匯

銀行名稱：香港上海匯豐銀行有限公司

銀行地址：香港中環皇后大道中1 號

匯款代碼：HSBCHKHHHKHK

收款人：仕宏拍賣有限公司

銀行編號：004

銀行戶口號碼：053-422283-838

iii) 支票

iv) 信用卡

接受的信用卡包括 VISA、MASTERCARD 或銀聯卡。若買家於拍賣會當天起 7 天後才以信用卡付款，則須額外支付發票總額的2%作利息。買家宜於購買拍品前知會有關信用卡公司，以減少付款時因授權問題而引起的延誤。

v) 現金

仕宏拍賣不接受包括代理人之內任何第三方支付款；不接受逾港幣十萬元（或等值貨幣）之現金款項。

若以支票、銀行轉帳或銀行電匯方式付款，須待仕宏拍賣確認款項到帳後方可提貨。

如買家未能在 30 天內支付拍品相關款項，仕宏拍賣可向買家收取相關款項的 18% 作為年利息，並執行以下一項或多項不與法律抵觸的補救措施：

- A) 對買家提出訴訟，索取違約賠償，包括訴訟費和律師費，及因買家遲付或拒絕付款而造成的利益損失。
- B) 撤銷拍品的出售權或出售給其他買家，但買家仍須支付拍賣佣金。
- C) 重新拍賣該拍品或私下出售，並提出訴訟以索償以下各項差額：
 - 買家所欠的全部款項、訴訟費和律師費。
 - 支付所有費用後的再售淨收益，並將盈餘（如有）付給貨主。
- D) 保管拍品，只有當買家支付全部款項（包括買家佣金、所有直接和間接存倉費用及利息）後才把拍品交付買家。
- E) 保存該買家的所有拍品。

13. 運輸及提貨

買家支付所有款項後，可到仕宏拍賣指定地址提貨。仕宏拍賣亦可為買家安排香港境內運送服務。仕宏拍賣不會承擔運輸過程中所引致的清關、損毀及/或遺失等問題及風險。如果買家要求仕宏拍賣將貨物寄往香港地區以外地址，仕宏拍賣會以買家名義，為寄出的拍品購買全額保險；運輸過程中的保險費、運輸費、包裝費及進出口稅項等將由買家支付，但仕宏拍賣不會承擔運輸過程中所引致的清關、損毀及/或遺失等問題及風險。買家須自行索取任何有關拍品的進出口、瀕臨絕種生物或其他方面之許可證。未獲得及 /或延誤取得該許可證，均不會被視為買家取消購買或延遲付款的理由。仕宏拍賣不會承擔因未能填妥或呈交所需進出口貨單、清單或其他文件所引致的責任。如買家要求仕宏拍賣代為申請出口許可證，仕宏拍賣有權就此服務另行收取費用。仕宏拍賣不能保證出口許可證將獲發放。仕宏拍賣及賣家一概無就拍品是否有進出口限制及 / 或禁運作出聲明或保證。

提貨地址：銅鑼灣告士打道 311 號皇室堡 15 樓 1508-10 室（銅鑼灣站E出口）辦公時間：星期一至五（早上 10:00至晚上6:00）；星期六、日及公眾假期（敬請預約）電話：852 3168-2192

14. 有限責任

- i) 在任何情況下，仕宏拍賣及 / 或寄售人的責任，將不會超過該拍品的實際購買價。
- ii) 仕宏拍賣純粹代表寄售人的權益行事。仕宏拍賣會在拍賣會上以買家所出的最高價格出售該拍品，而仕宏拍賣並不會就買家提供任何競投意見。如寄售人及 / 或買家違約，仕宏拍賣概不負責。
- iii) 仕宏拍賣不會對此圖錄中的遺漏及 / 或錯誤負上任何責任。如往後他人以此圖錄的資料作其他用途，仕宏拍賣將不會承擔任何責任。此外，仕宏拍賣擁有此圖錄的版權，如需使用或更改本圖錄中內容，需以書面通知仕宏拍賣並得到許可方可使用。
- iv) 書面、電話委託競投及網上同步競拍是額外提供之附加服務，風險由競投者承擔，而該等服務會在仕宏拍賣於拍賣時其他承諾之限下進行；因此，無論是由於疏忽或其他原因引致，仕宏拍賣毋須就未能作出該競投承擔責任。

15. 附帶條款

本拍賣會中的競投者，均知悉並同意以下條款：

- i) 仕宏拍賣有權在本拍賣會開始前或進行期間，以口頭或書面形式更改競投者通知書及一般銷售說明及條款。
- ii) 競投者通知書及一般銷售說明及條款內的交易及相關內容，均根據香港特別行政區的法律解釋和管轄。

註解

拍賣會：於 2024 年 11 月 23 日香港銅鑼灣告士打道 311 號皇室堡 15 樓 1508-10 室舉行的拍賣會。拍品：所有寄售到仕宏拍賣並於是次拍賣會中拍賣的貨品。每件拍品可為獨立貨品，或以 2 件或以上的貨品組合而成。保留價：是由仕宏拍賣及寄售人為每件拍品所設定的一個不公開的最低售價。落槌價：拍賣官落槌決定將拍品售予買家的價格。買家佣金：指根據「一般銷售說明及條款」所載費率買家按落槌價應付之佣金；競投者：指以任何方式考慮、作出或嘗試競投之任何人士，包括買家在內。寄售人：於是次拍賣會中寄售拍品的物主或物主代理人，或保管物品之公司或委託人。買家：以拍賣官的落槌價和應支付的買家佣金購入拍品的任何單位、個人或公司。拍賣官：是次拍賣會上代表仕宏拍賣的拍賣物品之人員。

GENERAL SALES TERMS AND CONDITIONS

The following agreement applies to all auctions held by L&H Auction Co., Ltd. (hereinafter refer to as "L&H Auction"). L&H Auction, the consignors, and buyers are legally bounded by this agreement. In case of any dispute, the content will be subject to the Chinese version.

1. BUYER'S PREMIUM AND PAYMENT

In addition to the hammer price, the buyer agrees to pay L&H Auction a buyer's premium and any applicable taxes and payments.

i) Buyer's Premium

The bidder who has made a successful bid shall become the buyer of the lot. The buyer shall pay a commission to L&H Auction, calculated as follows:

In the hammer price of each lot, for the portion at HK\$1,000,000 or below, the commission for such a portion is calculated at 19% of such portion; for the portion above HK\$1,000,000 to HK\$3,000,000, the commission for such a portion is calculated at 17% of such portion; for the portion in excess of HK\$3,000,000, the commission for such a portion is calculated at 15% of such portion. The buyer shall also pay L&H Auction the various buyer charges and accepts that L&H Auction may charge the consignor a commission and any applicable charges in accordance with the terms and conditions of the auction consignment agreement.

ii) Buyer's premium Discount

2% of the buyer's premium can be deducted if any outstanding payment(s) is settled within 7 days after the auction in the form of cash, cheque, bank transfer or bank wire transfer.

iii) Payment Methods

Buyers are required to settle all payment(s) within 15 days after the auction. L&H Auction accepts cash, cheque, credit card (Visa, Master, UnionPay), bank transfer and bank wire transfer. If a buyer pays by credit card 7 days from the day of the auction, an additional interests equivalent to 2% of the total amount of the invoice has to be paid.

2. THE CATALOGUE AND COLOUR OF AUCTION LOT

All auction lots are sold in their current conditions and cannot be refunded, nor exchanged. All lots are sold at the knock-down of the auctioneer's hammer. The text descriptions, valuations and pictures in the catalogue of the lots, as well as video products and publicity materials in other formats are for reference only, and do not represent guarantee by L&H Auction on the authenticity, value, colour, quality and flaw(if any) etc. of the lots. L&H Auction assumes no responsibility toward any inaccuracies or omissions in the above descriptions and reviews L&H Auction can revise before the auction. L&H Auction recommends that potential buyers should come forward to appraise the lots in person to make one's own judgment and to understand the conditions of the lots.

Should errors in tone, colour, fineness, shape etc. exist between the actual lot and its images and other formats of illustration, video products and publicity materials due to such cases as printing or photographic technics etc., the actual item shall prevail. L&H Auction assumes no responsibility for the bidder's decision to bid basing on the above colour grading description.

3. ESTIMATE

All prices in the auction catalogue are displayed in Hong Kong dollars ("\$"). Our estimate does not refer to the market value or final price of the said lot. Lot estimate is intended for reference only and L&H Auction reserves the right to adjust the estimate prior to the auction.

4. PREVIEW

L&H Auction shall hold a public exhibition of its auction lots prior to the auction. L&H Auction advises buyers to inspect the lots to understand their conditions by visiting the presale exhibition in person. Buyers are responsible for their act of bidding for the lots, and should not rely on the description in the catalogue and the illustration in such other formats as video products and publicity materials in decision-making. The buyer expressly accepts in full the current conditions of the lot once a decision to bid is made, and cancellation of contract is not allowed after a successful bid, and complaints relevant to the transacted item are not accepted.

5. WITHDRAWAL OF AN AUCTION LOT

L&H Auction has the right to withdraw any auction lot prior to the auction.

6. SECURITY DEPOSIT

Bidders must complete the security deposit payment when registering for the auction paddle before participating in L&H Auction's auction event.

All security deposits must be paid by bank transfer, telegraphic transfer or cash to the designated account of L&H Auction. L&H Auction does not accept payments from any third parties, including agents. If L&H Auction does not receive the bidder's security deposit and payment receipt by the registration deadline for the auction event, the bidder's paddle registration will be considered invalid. If the bidder fails to successfully bid on any auction Lots and has no outstanding payment with the L&H Auction Co., Ltd., L&H Auction will refund your security deposit (without interest) within 10 working days after conclusion of the auction event. Any losses or charges relating to currency exchange when returning the deposit will be borne by the bidder.

For bidders participate in the bidding through " L&H Online Auction " platform, please review Online Bidding Rules at www.lhauction.com.hk/en/buy and pay security deposit as required.

7. BIDDING, REFUSAL, AND RESERVE PRICE

Upon a successful bid, the bidder becomes the buyer of the lot. L&H Auction and the auctioneer can reject any bid deemed too low and withdraw the lot. The hammer price does not include the buyer's premium and other surcharges. Payment details can be found in article 1 and 11 of this agreement.

Each lot has a reserve price. During the bidding process, the auctioneer can reject any bid below the reserve price.

8. BIDDING BY FAX, PHONE, OR EMAIL

Bidders can entrust L&H Auction to place a bid. Bidders must submit their absentee bid forms and related documents by email, fax, or in person 48 hours prior to the start of the auction. Catalogues, application forms, absentee bid forms, and other

documents required can be downloaded from the official website: www.lhauction.com.hk/en/buy.

All bids will be executed at the lowest possible price in accordance with the auction terms and bidders' bids. Please note that for the benefit of the buyer, all bidders are requested to return the absentee bid forms as early as possible. If two or more bidders offer the same price for an identical lot, L&H Auction will process it on a first come, first served basis. Telephone bidders will receive a call from L&H Auction before the auction begins, but L&H Auction cannot guarantee that all calls will be connected successfully. Telephone bidders shall bear the risk.

L&H Auction will not be held responsible for any failure to provide the required information in a timely manner or any negligence caused by the negligence of the bidder during the bidding process.

9. ONLINE BIDDING

Bidder can participate in the bidding through "L&H Online Auction" platform. Should bidders wish to participate in L&H online auction, they must complete online registration at least 3 working days prior to the day of the auction and be approved by L&H Auction, and the bidders must settle the deposit payment at least 2 working days prior to the day of the auction before any online bidding can be placed. For online bidding registration and other related matters, please review Online Bidding Rules at www.lhauction.com.hk/en/buy.

10. SUCCESSFUL BID

The hammer price signifies the highest bidding price administered via the auctioneer, which implies that the bidder has successfully placed a bid for an auction lot and has become the buyer, thereby indicating that both the buyer and the seller have entered into an auction contractual agreement.

11. OWNERSHIP AND RISK

Buyers are required to settle the hammer price and the buyer's premium in full. Upon confirmation from L&H Auction that a payment has been accepted, the buyer acquires the ownership of the auction lot. At the same time, the risk of the subject lot will also be transferred to the buyer.

12. PAYMENT AND TERMS OF COMPENSATION

All payments shall be settled in full within 15 days from the auction. Payment of the hammer price, buyer's premium and any appropriate tax items and funds for the lot shall be made in Hong Kong Dollars by any of the following payment methods:

i) Bank wire transfer

ii) Bank transfer

Bank Name : Hongkong and Shanghai Banking Corporation Limited

Bank Address : 1 Queen's Road Central, Central, Hong Kong

Remittance Code : HSBCHKH1H1KH

Beneficiary : L&H Auction Co., Ltd.

Bank number : 004

Bank account number : 053-422283-838

iii) Cheque

iv) Credit Card

L&H Auction accepts credit card payment by VISA, MASTER-CARD or UnionPay. Buyer who effects payment after 7 days from the auction date shall have to pay an additional interests equivalent to 2% of the total amount of the invoice. The buyer should notify the relevant credit card company prior to the auction to minimize any delay arising from authorization issues at the time of payment.

v) Cash

L&H Auction does not accept cash payments exceeding HK\$100,000 (or in equivalent currency).

For payment settled by cheque, bank transfer or bank wire transfer, confirmation of receipt of funds has to be given by L&H Auction before collection of the auction lots(s).

In case the buyer fails to settle payment of the relevant funds within 30 days, L&H Auction has the right to collect from the buyer an annual interest at 18% of the relevant funds due, and to take one or more of the following remedial measures with no violation of the law:

A) To bring legal action against the buyer, claim compensation for breach of contract including litigation fees and legal expenses, as well as loss of interest arising from the buyer's delay or refusal to effect payment.

B) To withdraw the right to sell of the lot, or to resell it to other buyers, however, the buyer would still need to pay the buyer's premium.

C) To put the item up for re-auction or private sale, and to bring legal action to claim compensation for the various payment balance as follows:

- the full payment, litigation fees and legal expenses owed by the buyer.

- the net proceeds from the resale after all fees are settled, and the surplus (if any) to be paid to the owner.

D) The lot(s) is/are to be kept until the buyer pays the full amount (including buyer's premium, all direct and indirect storage fees, and interests) before delivering the lot to the buyer.

E) To retain all lots of the buyer.

13. TRANSPORTATION AND COLLECTION

The buyer can collect the lot(s) at the address designated by L&H Auction after settlement of all payments. L&H Auction can also arrange delivery service for the buyer for address in Hong Kong. L&H Auction assumes no responsibility for such issues and risks arising from customs clearance, damage and/or loss during the transportation process. If buyers request L&H Auction to arrange delivery services for address(es) outside of Hong Kong, L&H Auction would purchase full insurance in the name of the buyer for the lot put to delivery, while the insurance premium, transportation fees & packaging fees during the transportation process and export & import taxes etc. shall be paid by the buyer. The buyer should obtain for himself any relevant permit for the import/export of the relevant lot, endangered species or other aspects. Failure or delay in obtaining such permit would not be accepted reasons for the buyer's cancellation of purchase or delay in payment. L&H Auction assumes no responsibility arising from failure to complete or submit the required import/export manifests, lists or other documents. The buyer may request L&H Auction to apply for export license on his behalf; L&H Auction has to right to levy charges for this service. L&H Auction does not guarantee the issuance of export license. L&H Auction and the seller have not made any declaration or guarantee whatsoever on whether the lot is subject to import/export restriction and/or embargo. Collection Address: Room 1508-10, 15/F, Windsor House, 311 Gloucester Road, Causeway Bay (Causeway Bay Station Exit E) Office Hours: Monday to Friday (10:00 a.m. to 6:00 p.m.); Saturday, Sunday, and Public Holiday (Reservation required) Phone: 852 3168-2192

14. LIMITED LIABILITY

i) Under no circumstances will L&H Auction and/or the consignor's liability exceed the actual purchase price of the lot(s).

ii) L&H Auction acts purely on behalf of the consignor. L&H Auction will sell the lot(s) at auction at the highest price offered by the buyer, and L&H Auction will not offer any bidding opinions to the buyer. If the consignor and/or the buyer defaults, L&H Auction will not be held responsible.

- iii) L&H Auction will not be held responsible for any omissions and/or errors in the auction catalogue or any information used from the catalogue by third parties thereafter. In addition, L&H Auction must be notified in writing for obtaining permission to use or change the content of the catalogue.
- iv) Written, telephone and internet bids are offered as an additional service for no extra charge, at the Bidder's risk and shall be undertaken with reasonable care subject to L&H auction's other commitments at the time of the auction; L&H auction's therefore cannot accept liability for failure to place such bids save where such failure is unreasonable. Telephone and internet bids may be recorded. Online bids are made subject to the Conditions of Business for Live Online Bidding available on the L&H website or upon request. The Conditions for Live Online Bidding apply in relation to online bids, in addition to these Conditions of Business.

15. ADDITIONAL TERMS

Bidders in this auction are aware of and agree to the following terms:

- i) L&H Auction reserves the right to change the Bidder's Notice and General Sales Terms and Conditions, either verbally or in writing, during or before the start of the auction.
- ii) The transaction and related content from the Bidder's Notice and the General Sales Terms and Conditions are interpreted and governed by the laws of the Hong Kong Special Administrative Region.

ANNOTATION

Auction:

The auction to be held at Room 1508-10, 15/F, Windsor House, 311 Gloucester Road, Causeway Bay, Hong Kong, on 23 November 2024.

Auction lot:

All goods consigned to L&H Auction and auctioned at the auction. Each lot can be a stand-alone item or a combination of 2 or more items.

Reserve Price:

An undisclosed minimum price set by L&H Auction and the consignor for each lot.

Hammer Price:

The price at which the auctioneer decides to sell the auction lot to the buyer, by the fall of the hammer.

Buyer's Premium:

The premium payable by the buyer on the hammer price at the rates set out in the General Sales Terms and Conditions.

Bidder:

Any party considering, making, or attempting to make a bid, by whatever means, including buyers.

Consignor:

The owner or the representative of the owner of a lot offered at the auction, or the company or trustee to administer the said lot.

Buyer:

Any organization, individual, or company purchasing an auction lot(s) at hammer price and including buyer's premium.

Auctioneer:

Any person who represents L&H Auction in the auctioning of a lot(s).

Paddle #投標號碼
(For official use only/只供內部使用)

姓名/公司名稱 : _____ 身份證號碼/護照號碼/公司編號# : _____
Name/Company Name: _____ I.D./Passport/Business Registration No.#: _____
(請附上身份證或護照影印本以作核對用途 Please attach a copy of your I.D.Card/Passport for identification purpose)

通訊地址 : _____
Address: _____

郵政區號 : _____ 電話 : _____ 電子郵箱 : _____
Postal Code: _____ Telephone: _____ Email Address: _____

拍品類別: 古董級普洱茶 珍稀補品專場
Auction Category: Vintage Puer Tea Premium Delicacies Auction

THE CONTRACT BETWEEN THE BUYER AND THE SELLER IS CONCLUDED ON THE STRIKING OF AUCTIONEER'S HAMMER, AND PAYMENT OF THE PURCHASE PRICE (HAMMER PRICE AND APPLICABLE BUYER'S PREMIUM) FOR ANY LOT AND ANY BUYER'S EXPENSES IS DUE IMMEDIATELY IN HONG KONG DOLLARS ON THE CONCLUSION OF THE AUCTION.

買家及賣家之合約於拍賣官擊槌時生效。買家必須於拍賣會結束後，立即以港幣支付拍賣品之買入價（即落槌價及買家佣金）及任何買家的費用。

All security deposits must be paid by bank transfer, telegraphic transfer or cash to the designated account of L&H Auction. L&H Auction does not accept payments from any third parties, including agents. If L&H Auction does not receive the bidder's security deposit and payment receipt by the registration deadline for the auction event, the bidder's paddle registration will be considered invalid.

所有保證金必須以銀行轉帳、電匯或現金方式付款。仕宏拍賣不接受包括代理人之內任何第三方支付。如仕宏拍賣未在拍賣活動登記限期內收到競投者之保證金及付款憑據，則視為競投者拍賣投標牌登記申請無效。

Please tick the box if you do not wish to receive information about future events of L&H Auction Co., Ltd.
本人不欲收取任何更多關於仕宏拍賣有限公司的活動資料及訊息。

Please tick the box if you do not wish to disclose your personal information to the affiliates of L&H Auction Co., Ltd. for marketing purposes.
為向閣下提供更佳服務，仕宏拍賣有限公司有可能將競投者提供的個人資料轉移至仕宏旗下集團之公司及其生意夥伴。本人不欲向仕宏拍賣有限公司以外之第三方披露所提交的個人資料。

L&H Auction doesn't accept any payment from any third parties (agent inclusive), nor cash in excess of HKD100,000 (or its equivalent in other currencies).

仕宏拍賣不接受包括代理人之內任何第三方支付；不接受逾港幣十萬元(或等值貨幣)之現金款項。

By signing below, I agree to be bound by the Terms and Conditions of Sale as printed in the catalogue.
本人同意接受拍賣圖錄內列明之拍賣規則及條款。

日期 Date _____ 簽署及公司印章 Signature & Company Chop _____

If you wish to obtain further information on L&H's privacy policy, or to make amendments to the personal information provided, please contact us on +852 3168 2192.

閣下如欲索取更多有關仕宏個人私隱政策的資料或更改已提交的個人資料，請致電+852 3168 2192。



姓名/公司名稱: _____ 身份證號碼/護照號碼/公司編號#: _____
Name/Company Name: _____ I.D./Passport/Business Registration No. #: _____
(請附上身份證或護照影印本以作核對用途 Please attach a copy of your I.D.Card/Passport for identification purpose)

通訊地址: _____
Address: _____

郵政區號: _____ 電話: _____ 電子郵箱: _____
Postal Code: _____ Telephone: _____ Email Address: _____

拍品編號 Lot No.	拍品名稱 Lot Description	最高競價 (書面委託) Max bid HK\$ (for written bids only)

競投者應親自出席拍賣會。如不能親身出席或有代理人出席，可採用書面形式委託仕宏拍賣代為競投或電話競投。所有保證金必須以銀行轉帳、電匯或現金方式付款。仕宏拍賣不接受包括代理人之內任何第三方支付。仕宏拍賣有權決定是否接受上述委託。競投者必須在拍賣會開始前48小時透過電郵、傳真或親身遞交投標委託書及保證金相關文件。申請一經確認，仕宏拍賣將以電郵形式回覆競投者。網上同步競拍、書面及電話競投是仕宏拍賣提供之附加服務，風險由競投者承擔，而該等服務會在仕宏拍賣於拍賣時其他承諾之限下進行；因此，無論是由於疏忽或其他原因引致，仕宏拍賣毋須就未能作出該競投承擔責任。

Bidders shall attend the auction in person. If bidders or their agent cannot attend in person, they can appoint L&H Auction in writing to bid on their behalf. All security deposits must be paid by bank transfer, telegraphic transfer or cash to the designated account of L&H Auction. L&H Auction does not accept payments from any third parties, including agents. L&H Auction has the discretion to accept or decline the above appointment. Bidders must submit their absentee bid forms, security deposit and related documents by email, fax, or in person 48 hours prior to the start of the auction. L&H Auction will send confirmation to bidders via email upon received of the bid form. Please note that the execution of online bids, written and telephone bids are offered as an additional service for no extra charge, and at the bidder's risk. It is undertaken subject to L&H Auction's other commitments at the time of the auction. L&H Auction's therefore cannot accept liability for failure to place such bids, whether through negligence or otherwise.

書面競投 WRITTEN BIDS

- 競投將以盡可能低之價格進行。在適當情況下，閣下之書面競投價將會被大概調整至最接近拍賣官遞增之競投金額。
Bidding will be conducted at the lowest possible price. If appropriate, your absentee bids will be roughly adjusted to the bidding increment of the Auctioneer as close as possible.
- 如仕宏拍賣就同一拍品收到兩個或兩個以上競投價相同的書面競投，而在拍賣時此等競投價乃該拍品之最高競投價，則該拍品會歸於其書面競投最先送抵仕宏拍賣之競投者。
If L&H Auction receives two or more absentee bids at the same bidding price, and during the Auction, such bidding prices are the highest bids for that Lot, then that Lot will belong to the Bidder whose absentee bid reaches L&H Auction first.
- 拍賣官可直接於拍賣台上執行書面競投。
The Auctioneer can execute absentee bids directly on the auction stage.

電話競投 TELEPHONE BIDS

- 請清楚註明於拍賣期間可聯絡閣下之即時通訊方式及工具，仕宏拍賣會於閣下擬競投之拍品競投前致電給閣下，該即時通訊工具所傳達之競投信息（無論是否為閣下本人傳達），均視為閣下所為，閣下應對其行為承擔所有責任（包括但不限於法律責任）。
Please indicate clearly the instant communication methods and instruments that you can be contacted during the auction period, we will phone you before the bidding of the Lot that you intend to bid for, the bidding information transmitted by you personally shall be considered as transmitted by you, and you shall bear all liability and responsibility (including but not limit legal liability and responsibility) for the actions taken by it.
- 仕宏拍賣有絕對權利對所有電話競投錄音和保存。選擇電話競投即代表競投人同意其電話被錄音。
All telephone bids may be recorded and kept at L&H Auction's sole direction, by opting for telephone bids, the Bidder agrees that its phone conversation will be recorded.

網上競投服務 ONLINE BIDDING

如競投者欲通過仕宏拍賣的【網絡同步競拍】平台參與競拍。請於拍賣開始前的三個工作天前完成網絡帳戶的註冊並通過仕宏拍賣的審批，同時於拍賣開始前的兩個工作天前完成交納保證金，方可進行網上競投。有關網上競投登記及其他相關事宜，可參閱www.lhauction.com.hk/tc/buy【網上競投規則】。Should bidders wish to participate in L&H online auction through "L&H Online Auction" platform, they must complete online registration at least 3 working days prior to the day of the auction and be approved by L&H Auction, and the bidders must settle the deposit payment at least 2 working days prior to the day of the auction before any online bidding can be placed. For online bidding registration and other related matters, please review Online Bidding Rules at www.lhauction.com.hk/en/buy

本人謹此委託仕宏拍賣有限公司競投以上拍品。本人明白拍品落槌價並不包括佣金及其他費用。本人同意拍賣圖錄內列明之拍賣條款及細則。I hereby authorise L&H Auction Co.,Ltd. to bid on my behalf for the above Lot(s). I understand the hammer price does not include buyer's premium. I agree to be bound by the conditions of sale as printed in the catalogue.

日期 Date _____ 簽署及公司印章 Signature & Company Chop _____



御尚芳齋

